



Different ABCD Patterns

Presented By:

Aiman





Disclaimer

- BearBullTraders.com employees, contractors, shareholders and affiliates, are **NOT an investment advisory service, a registered investment advisor or a broker-dealer and does not undertake to advise clients on which securities they should buy or sell for themselves.**
- You understand that **NO** content published as part of the BearBullTraders Room and its Website constitutes a recommendation that any particular investment, security, portfolio of securities, transaction or investment strategy is suitable for any specific person.
- You further understand that none of the creators or providers of our Services or their affiliates will advise you personally concerning the nature, potential, value or suitability of any particular investment, security, portfolio of securities, transaction, investment strategy or other matter.



Outline

1. Introduction

1. Why do we trade patterns.
2. The downside of trading patterns
3. Why did I choose ABCD pattern as my personal edge

2. Rules

3. Types of ABCD patterns

- Type A
- Type B
- Type C

4. Replay Videos for some ABCD patterns



Introduction

1. Why do we trade patterns.

A) Patterns have been used for so many years

B) Patterns are self fulfilling prophecy

2. The downside of trading patterns

A) The clustering illusion.

B) Patterns could cause us to force a trade



Introduction



Introduction



Introduction



Introduction

3. Why did I choose ABCD pattern

- 1) It keeps me from chasing a stock
- 2) Happens quiet often
- 3) Easy to spot



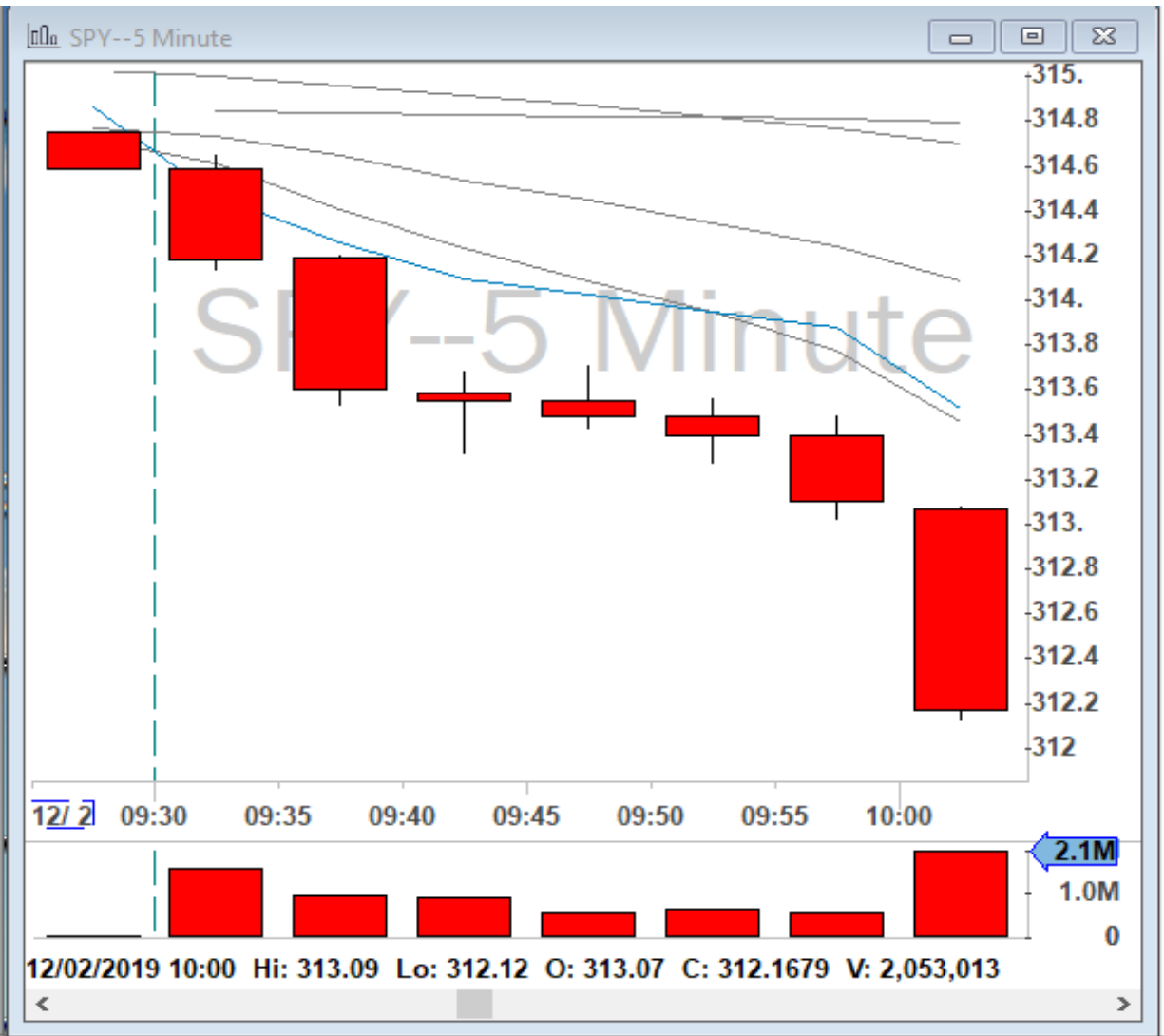
Rules

- 1) The trend should be visible.
- 2) Pullback to a level (PCL/Moving Average)
- **Exception:** Huge move followed by a doji/hammer (Preferably double doji)
- 3) Take the first and second legs up only
- 4) 50-70% retracement, if the trend is strong, at least 30-50%.
- 5) Entry closer to the level C or a new high.
- 6) Stop loss: Below C or new 1 minute low after the breakout.
- 7) Target: Depending on one's style

Confirmation: Hammer/reverse hammer, spinning top, tweezer candlesticks, harami candlesticks at the pullback

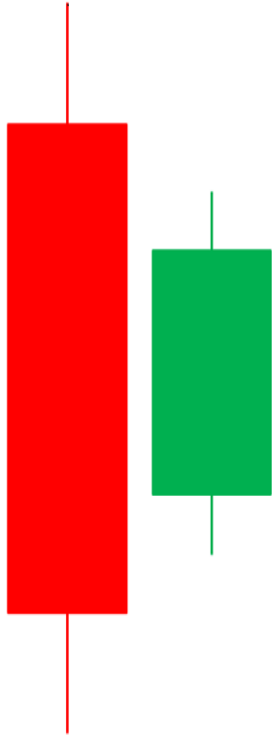


Exception Example

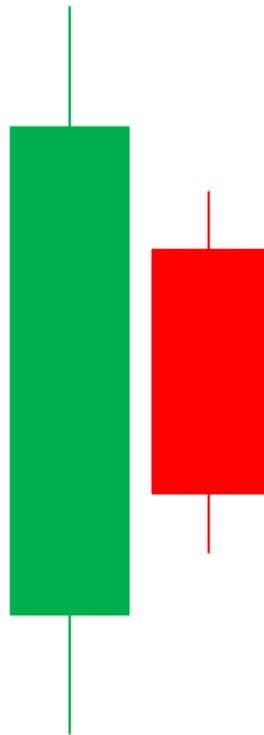


Candlesticks

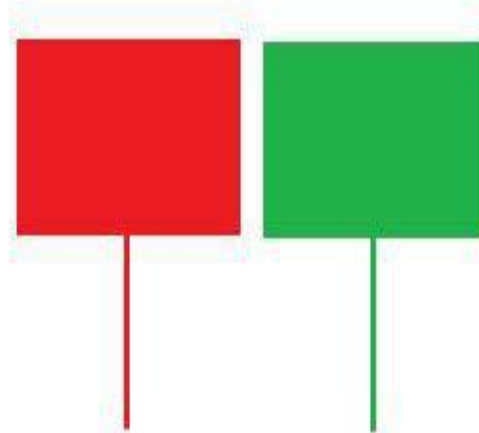
BULLISH HARAMI



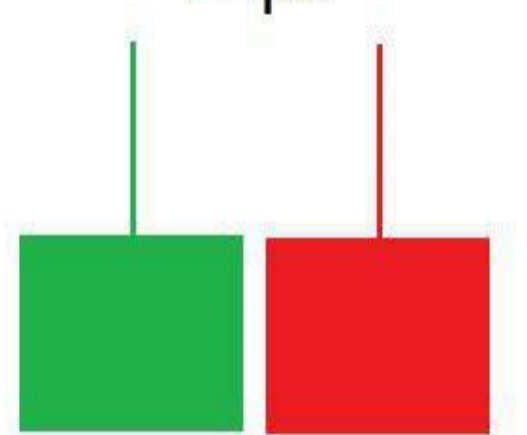
BEARISH HARAMI



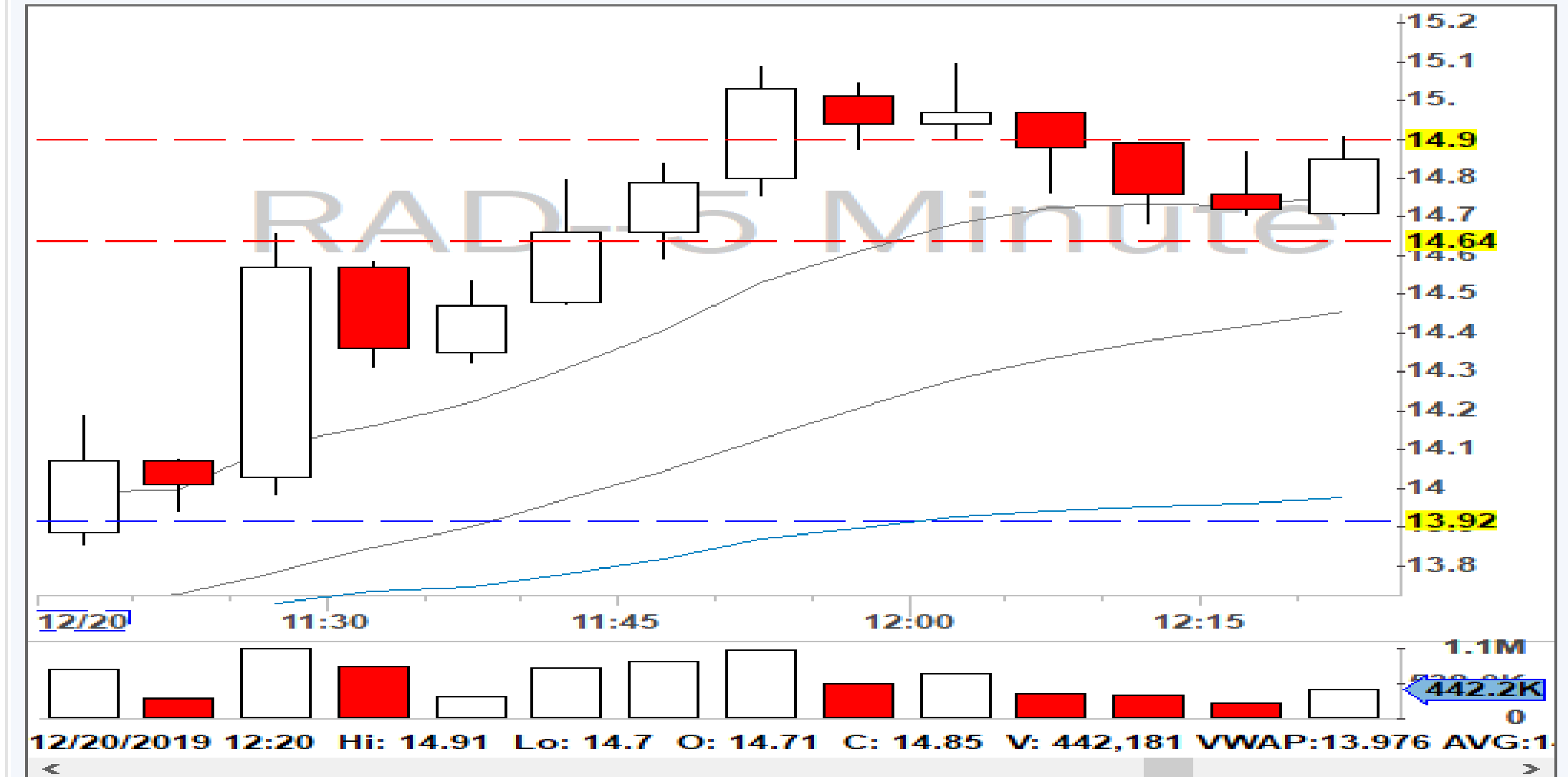
Tweezer
Bottoms



Tweezer
Tops



Candlesticks



Candlesticks



Types of ABCD patterns

Type A

- -Similar to an ascending triangle
- -The breakout happens after a long sideways consolidation
- -The consolidation continues till the moving average reaches the price action

Entry: 1)As close as possible to C

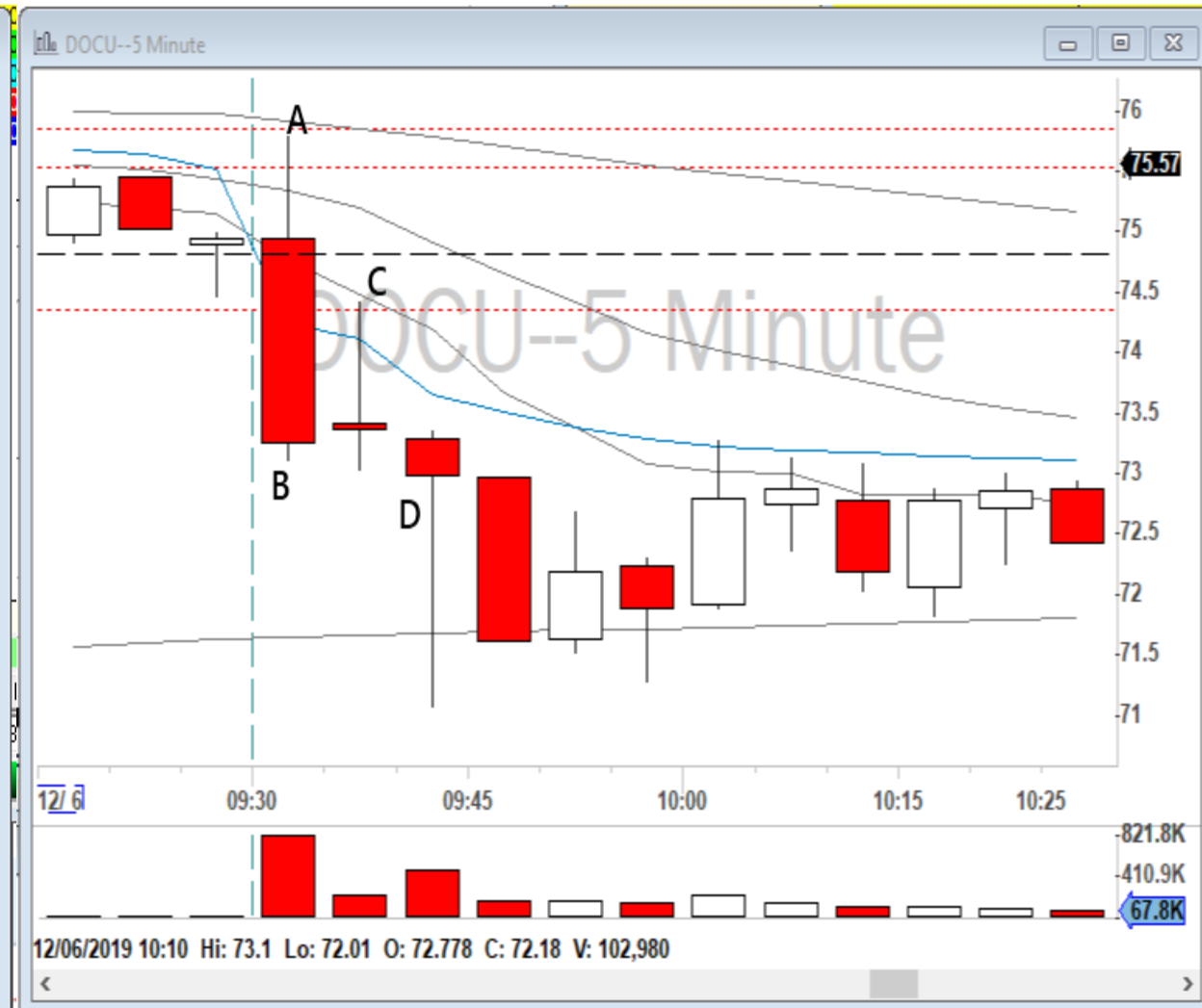
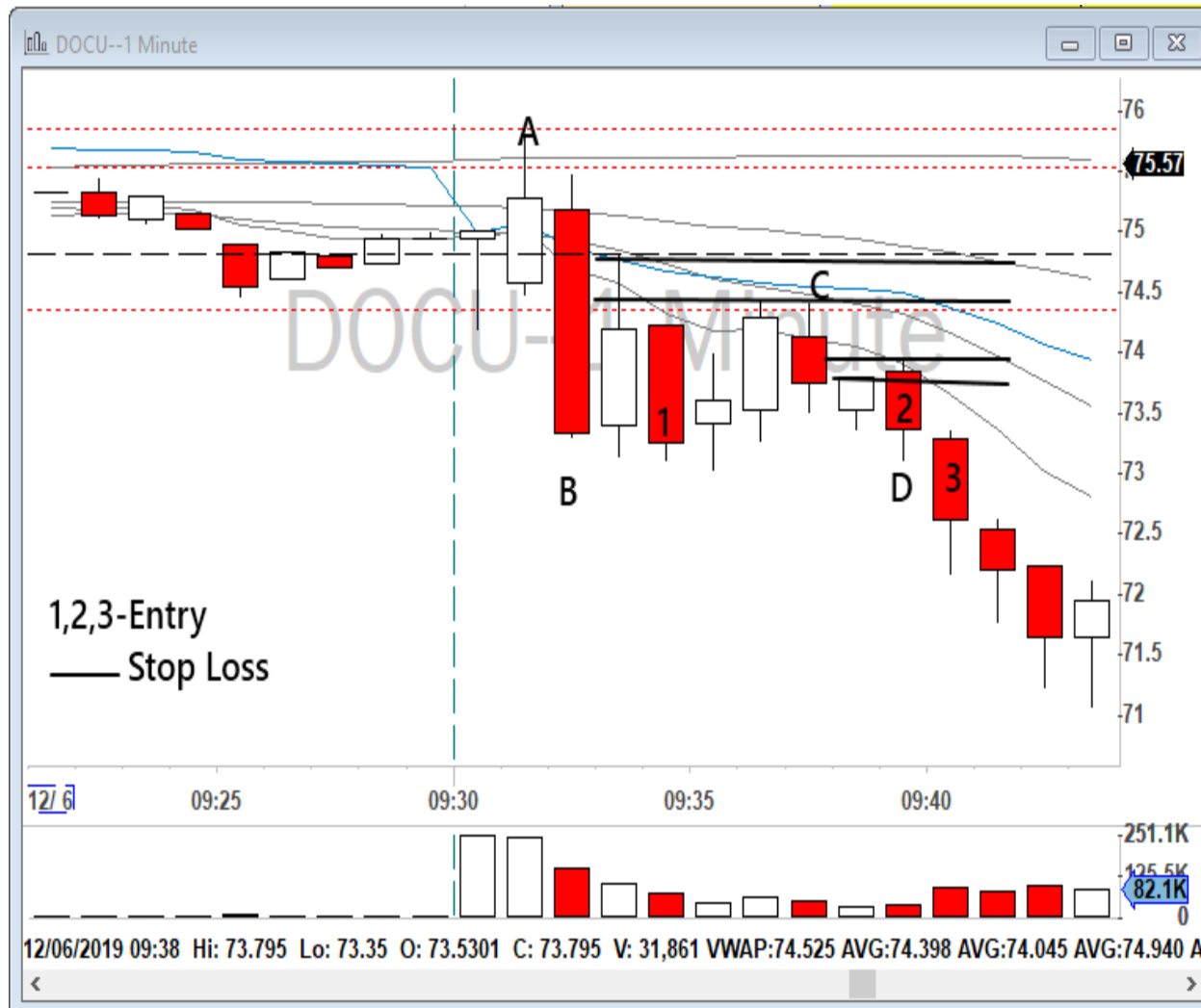
2)At the break of the consolidation

Stop loss: 1)With an early entry stop loss is the break of C

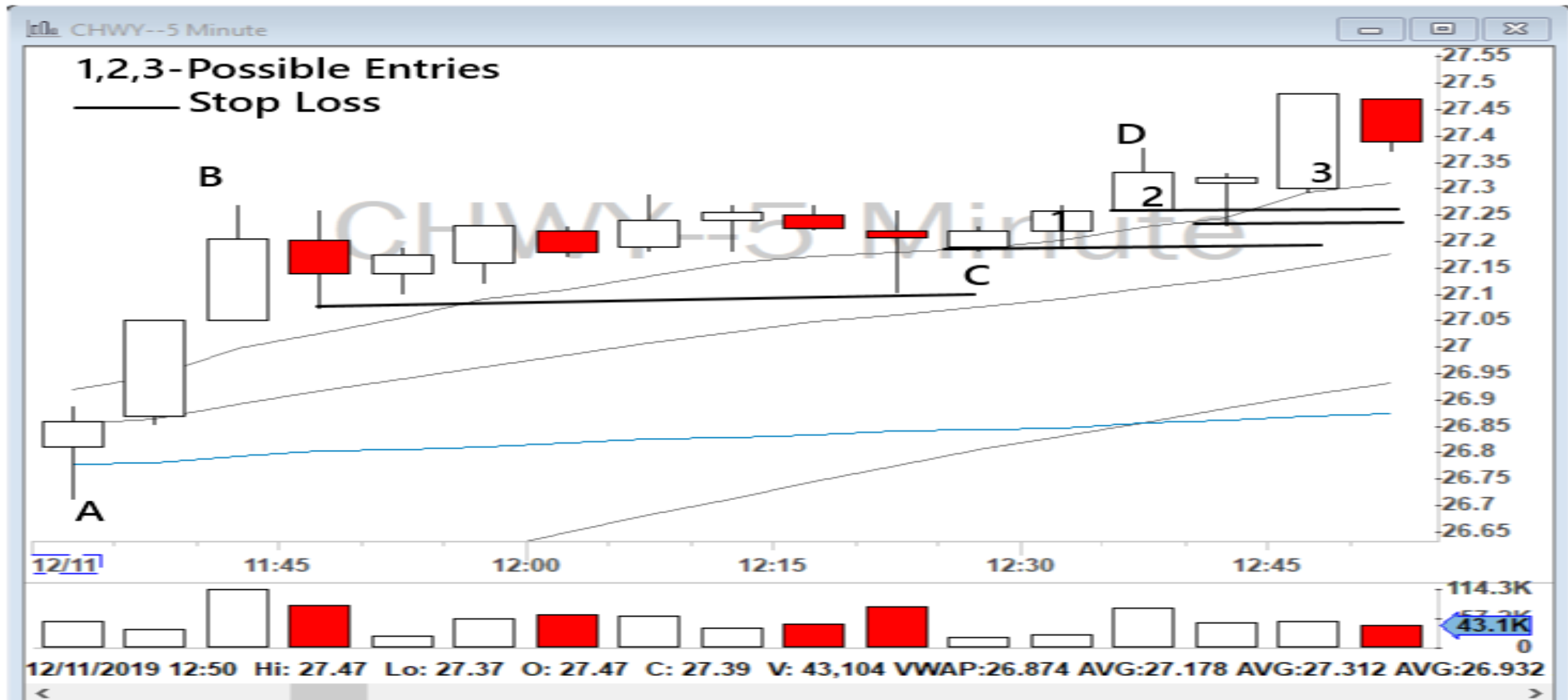
2)If the entry is the breakout area: Stop loss new 1- or 2-minute low



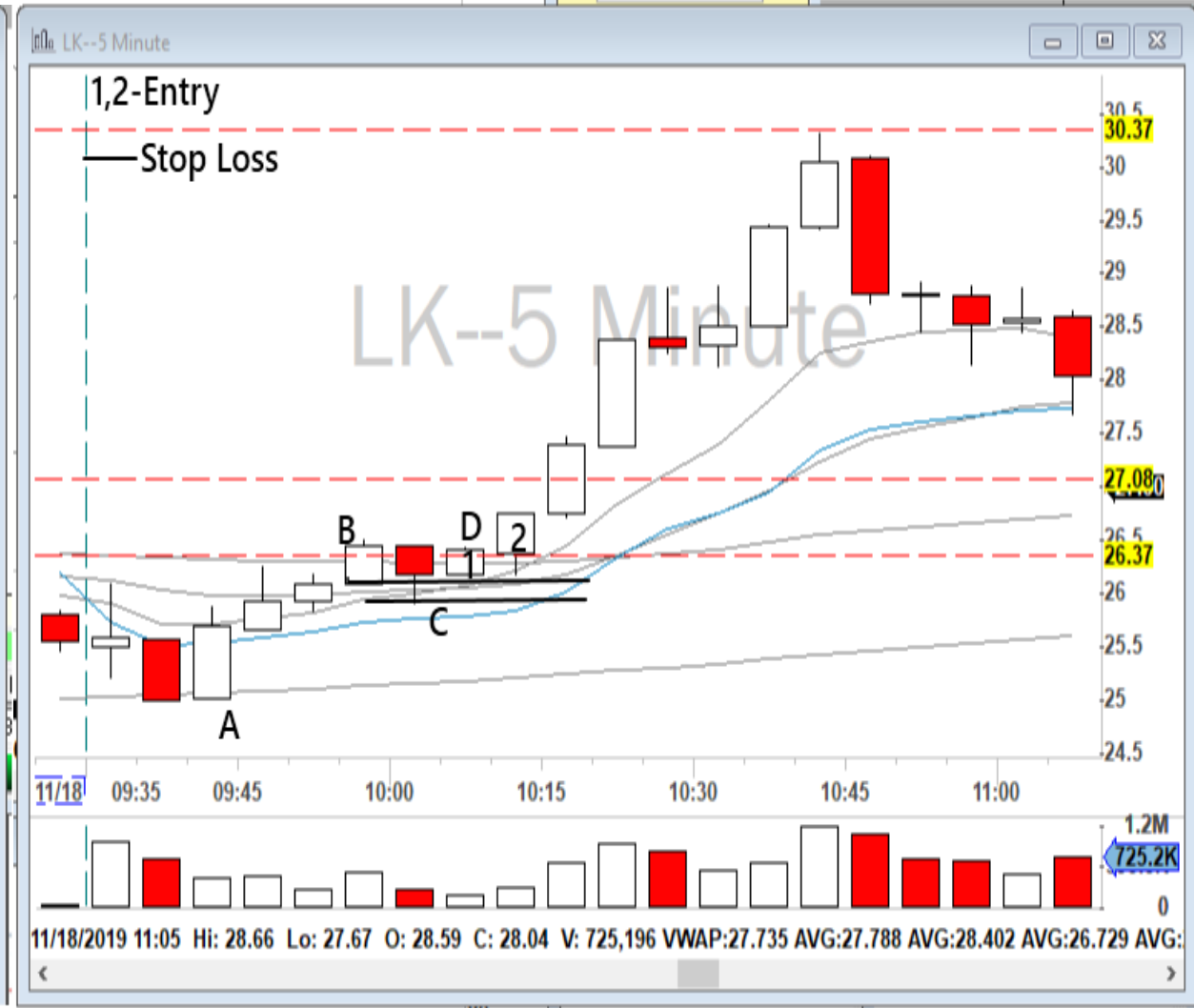
Examples for Type A



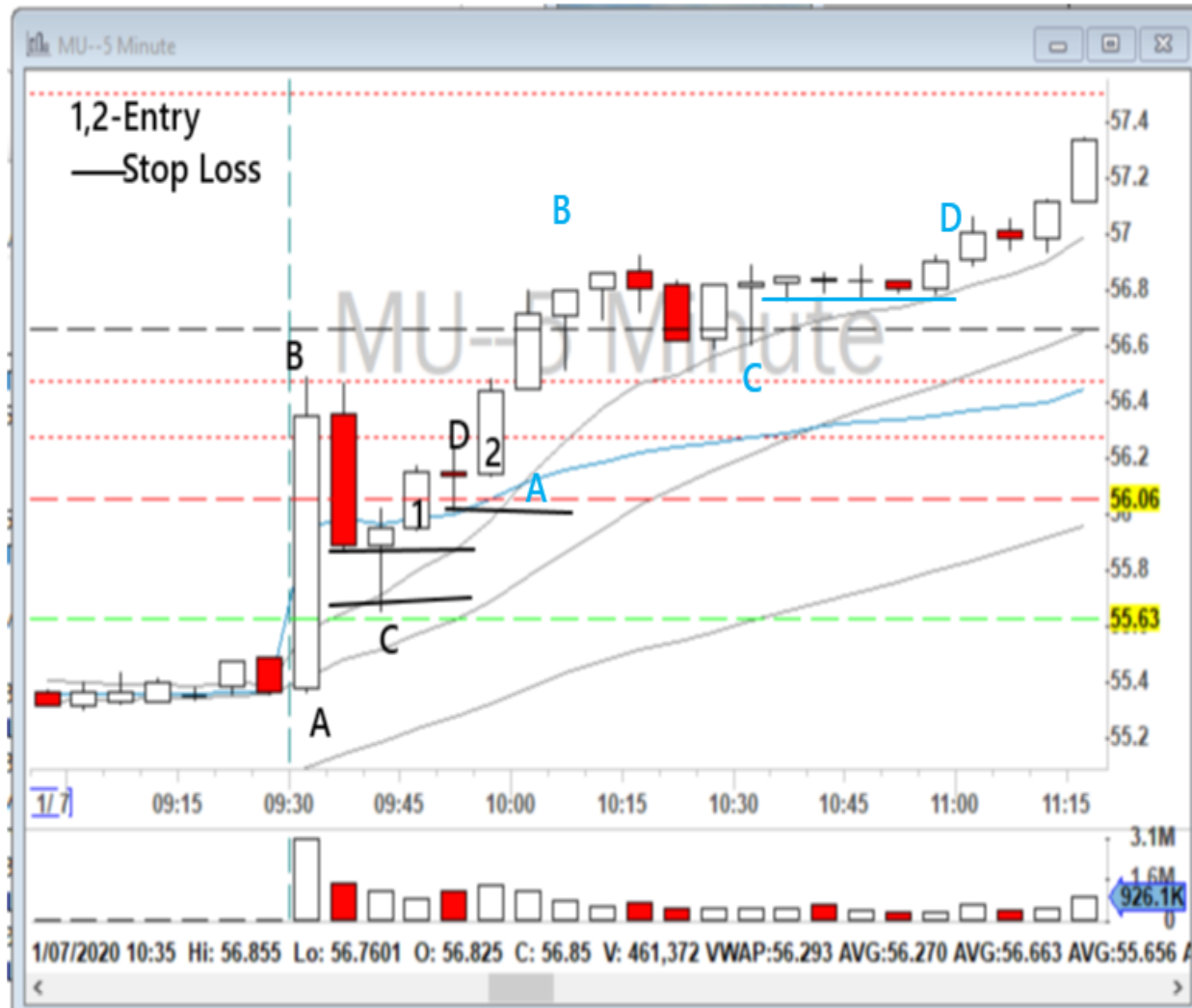
Examples for Type A



Examples for Type A



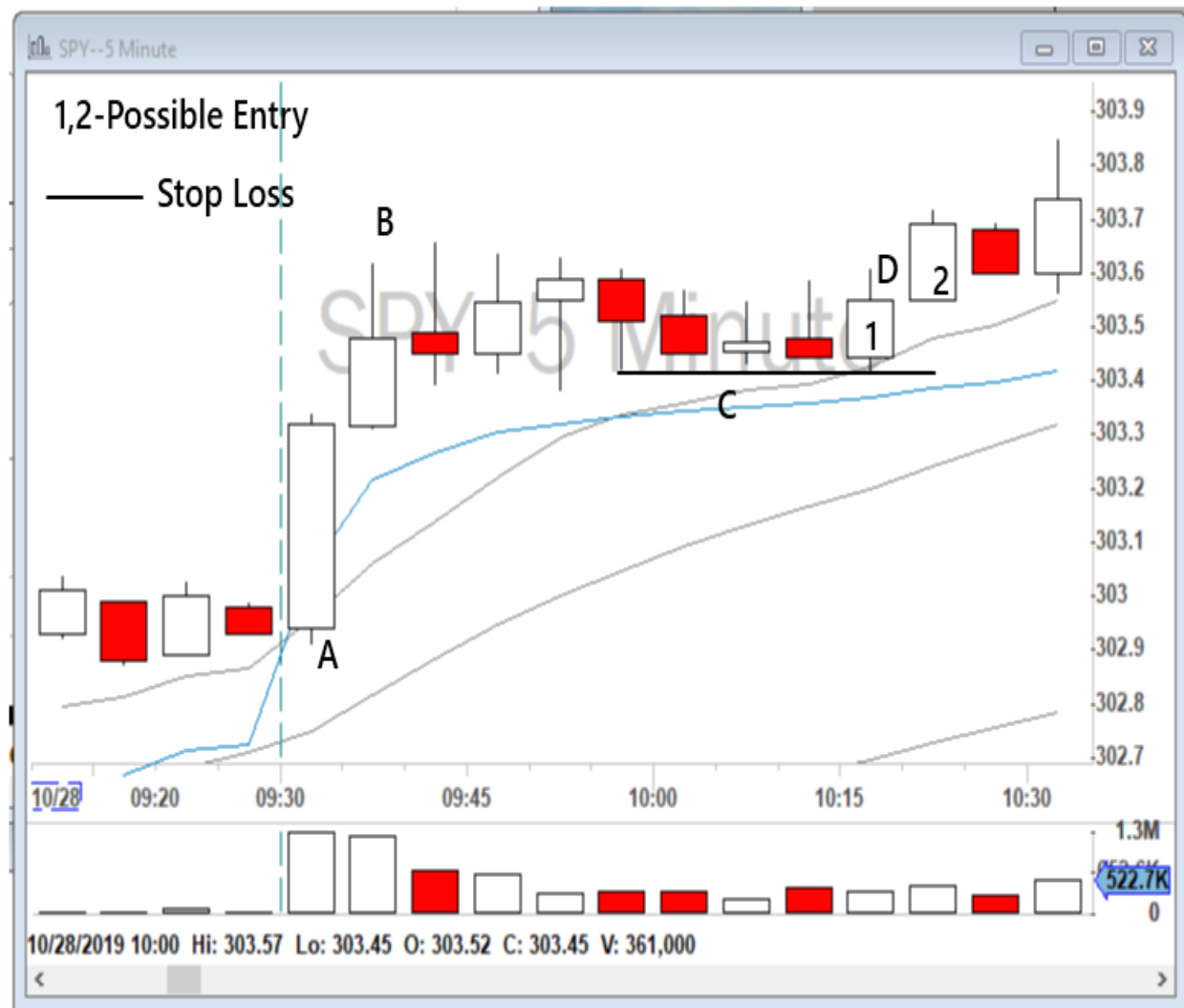
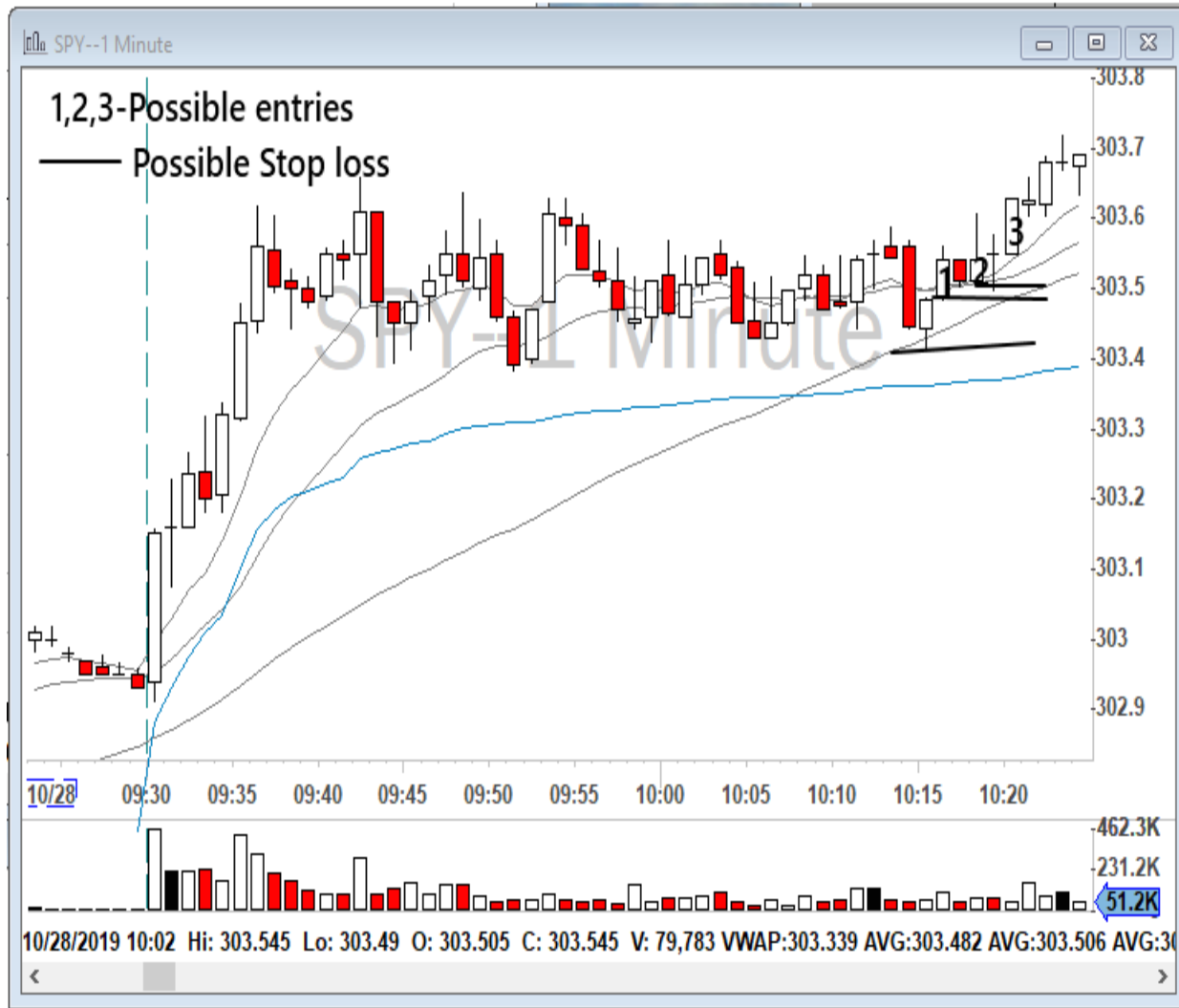
Examples for Type A



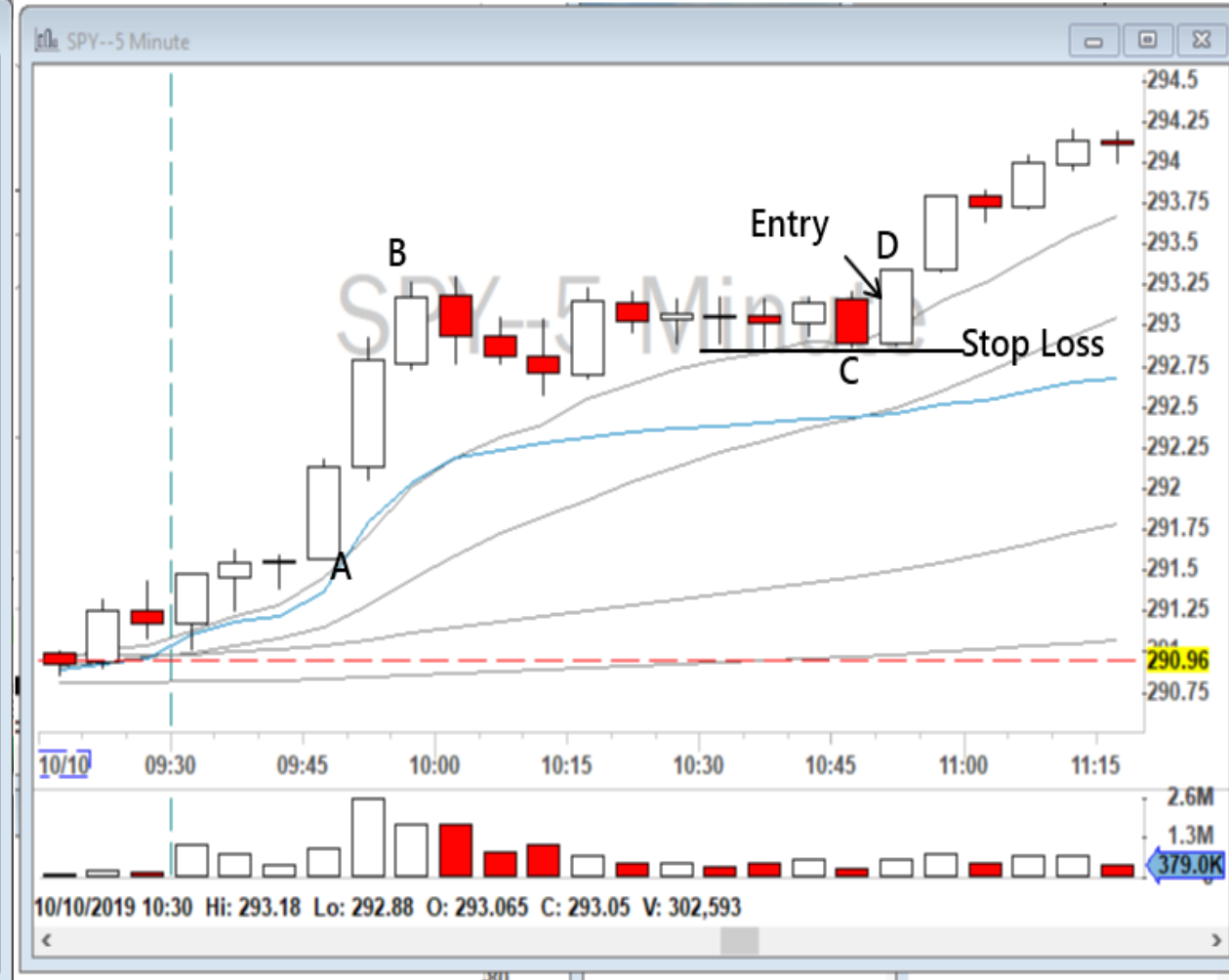
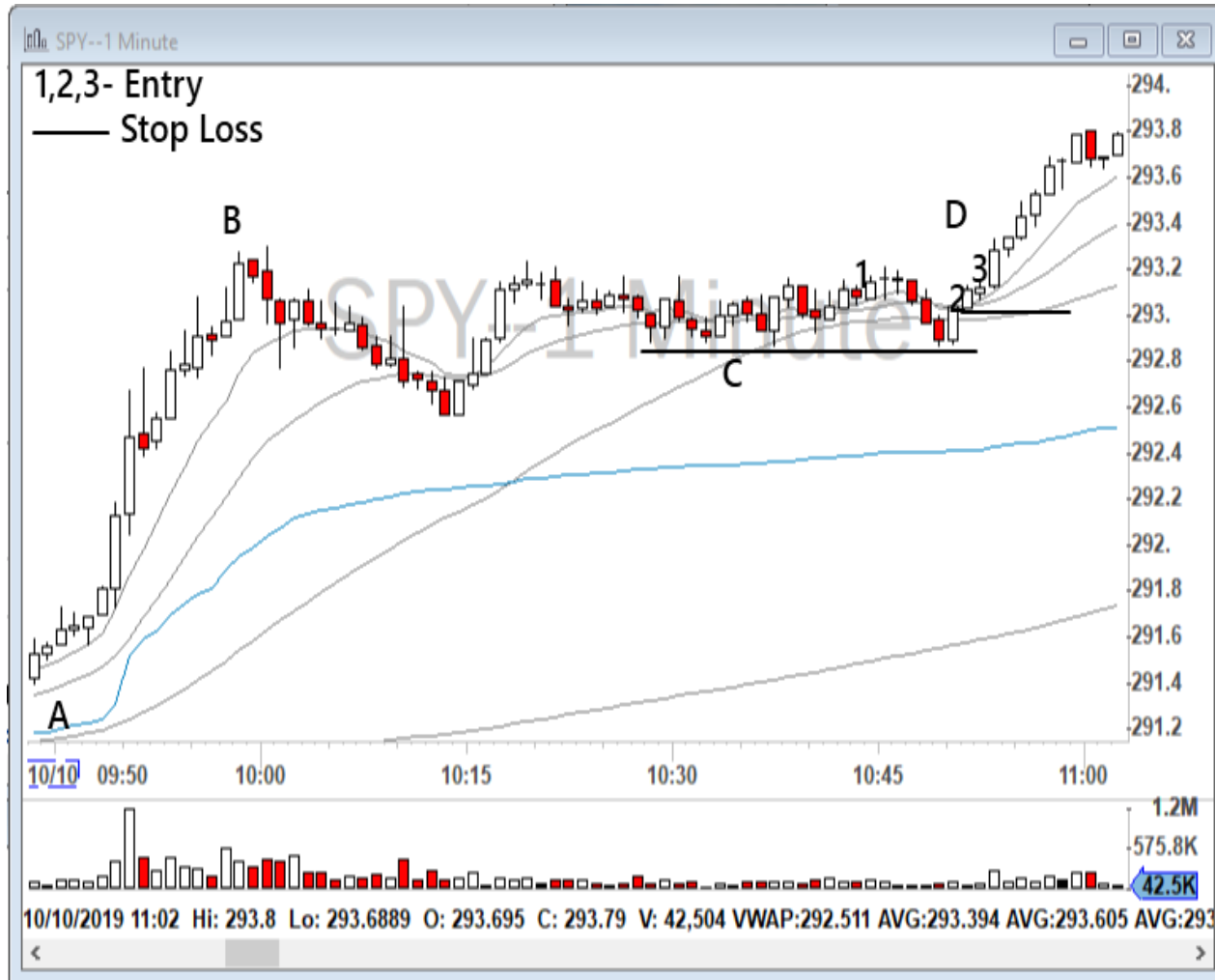
Examples for Type A



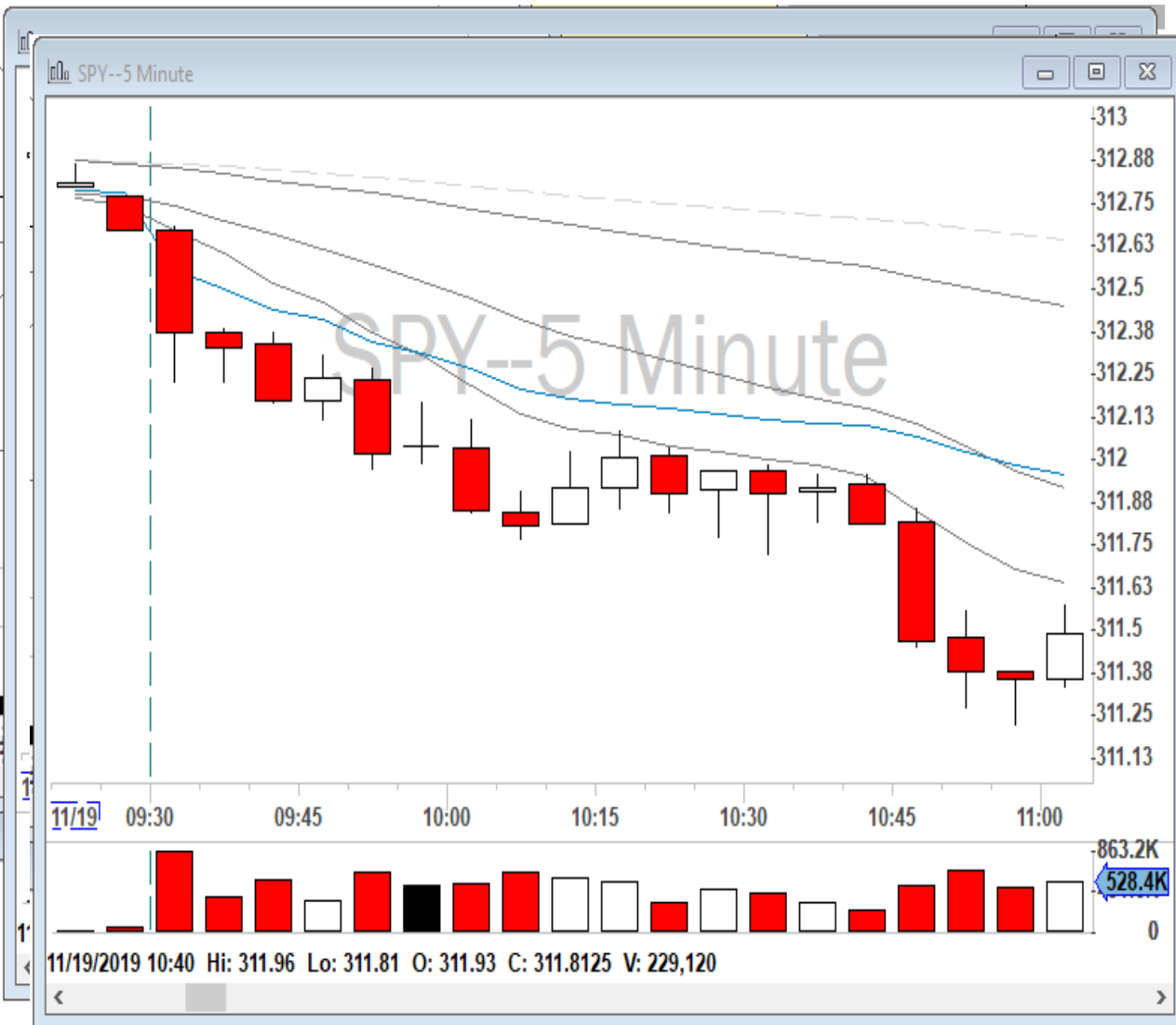
Examples for Type A



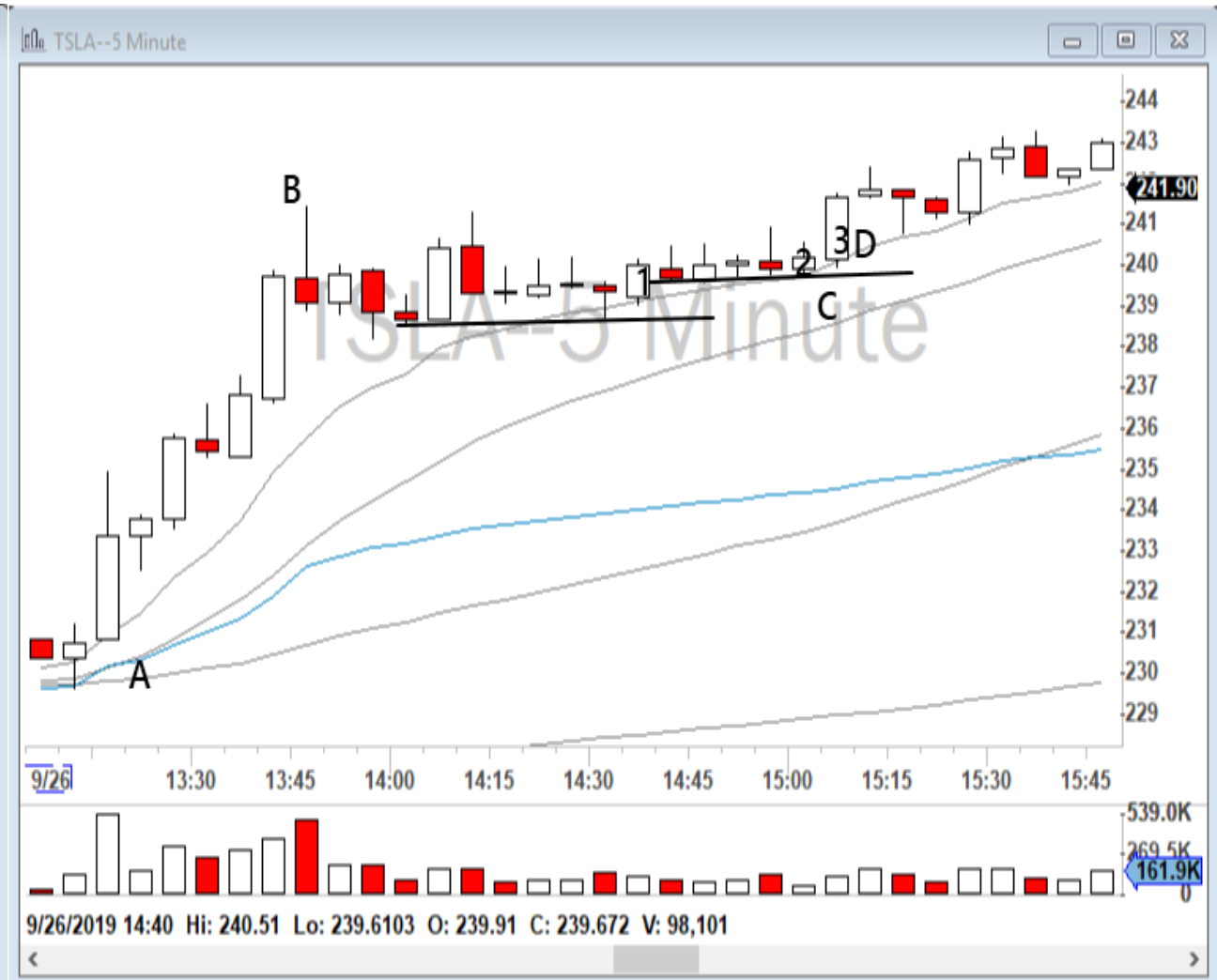
Examples for Type A



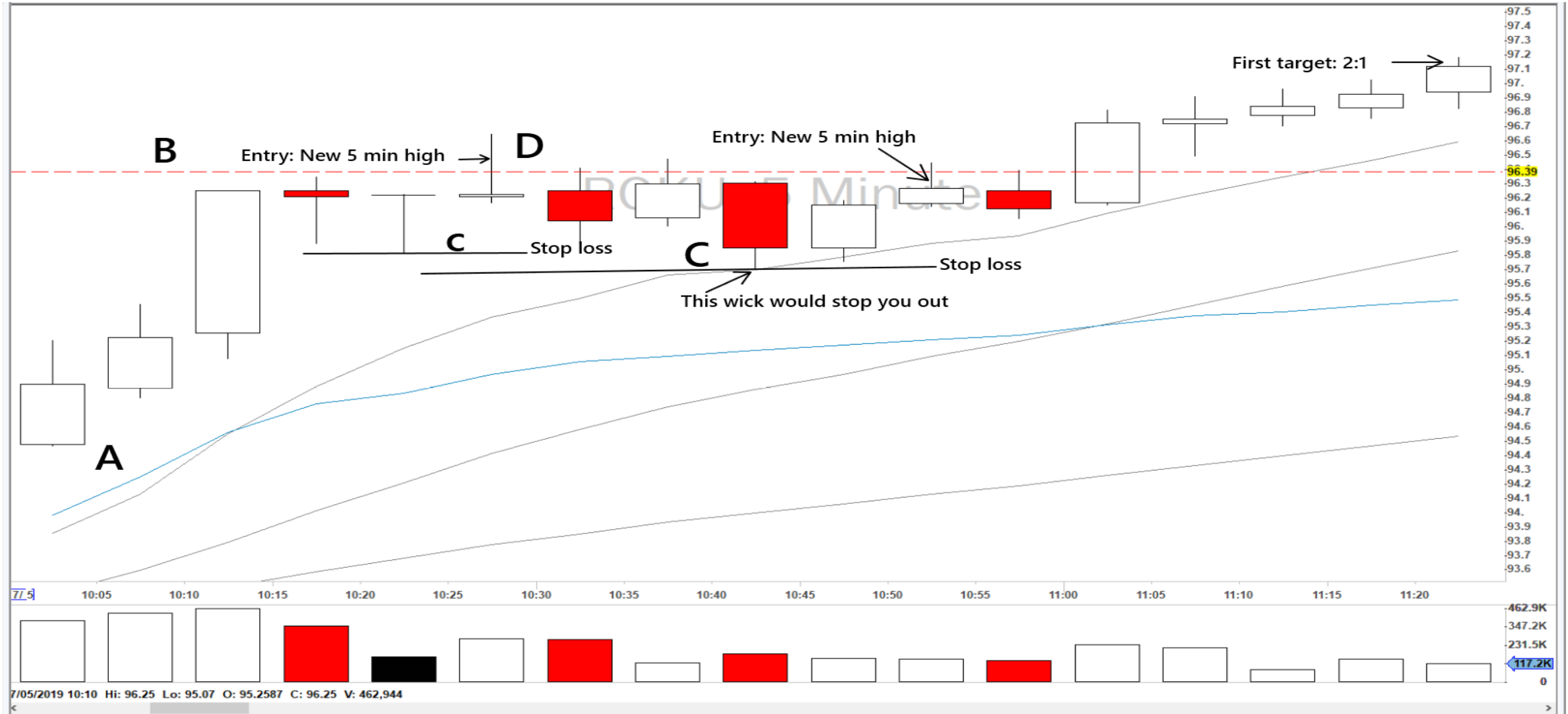
Types of ABCD patterns



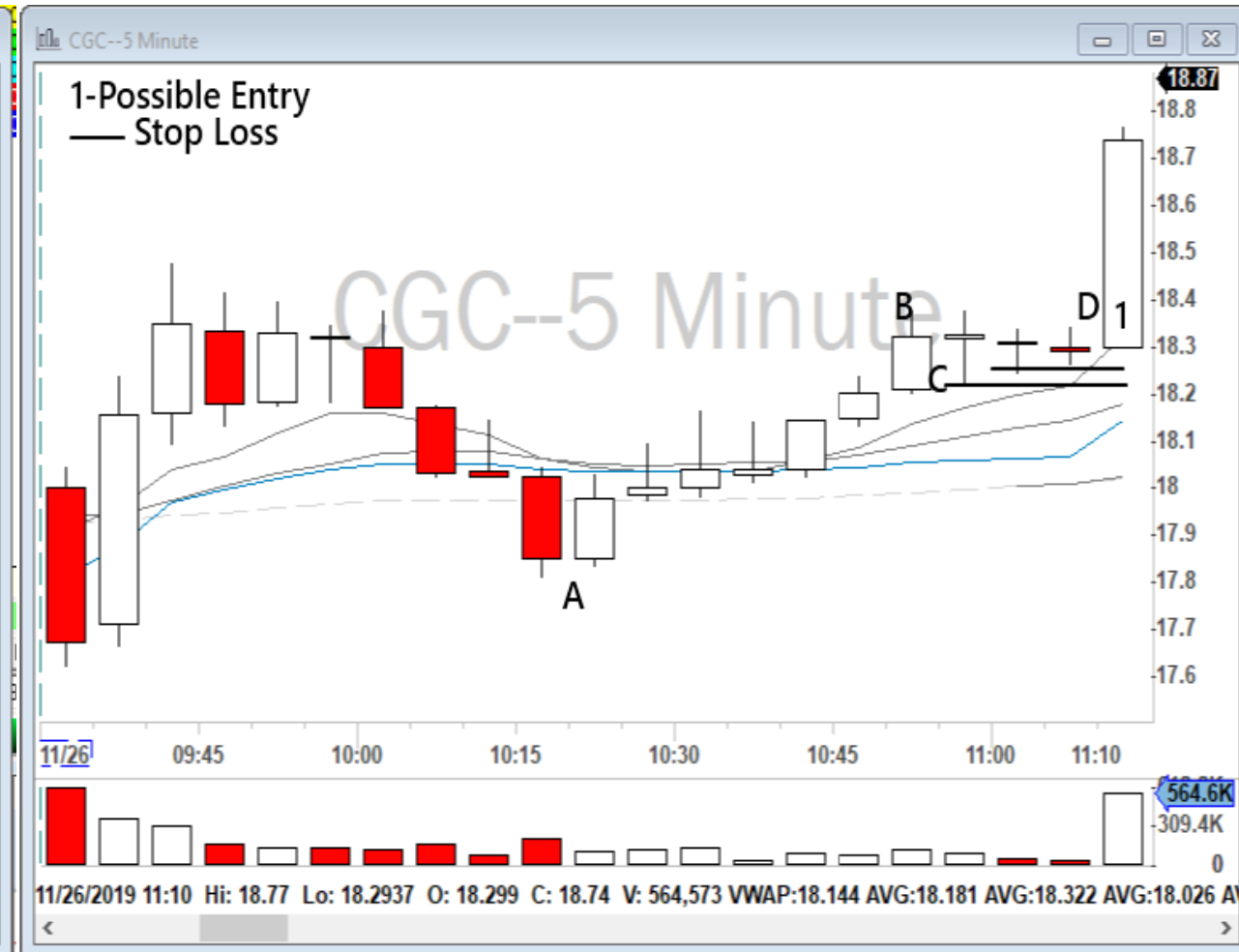
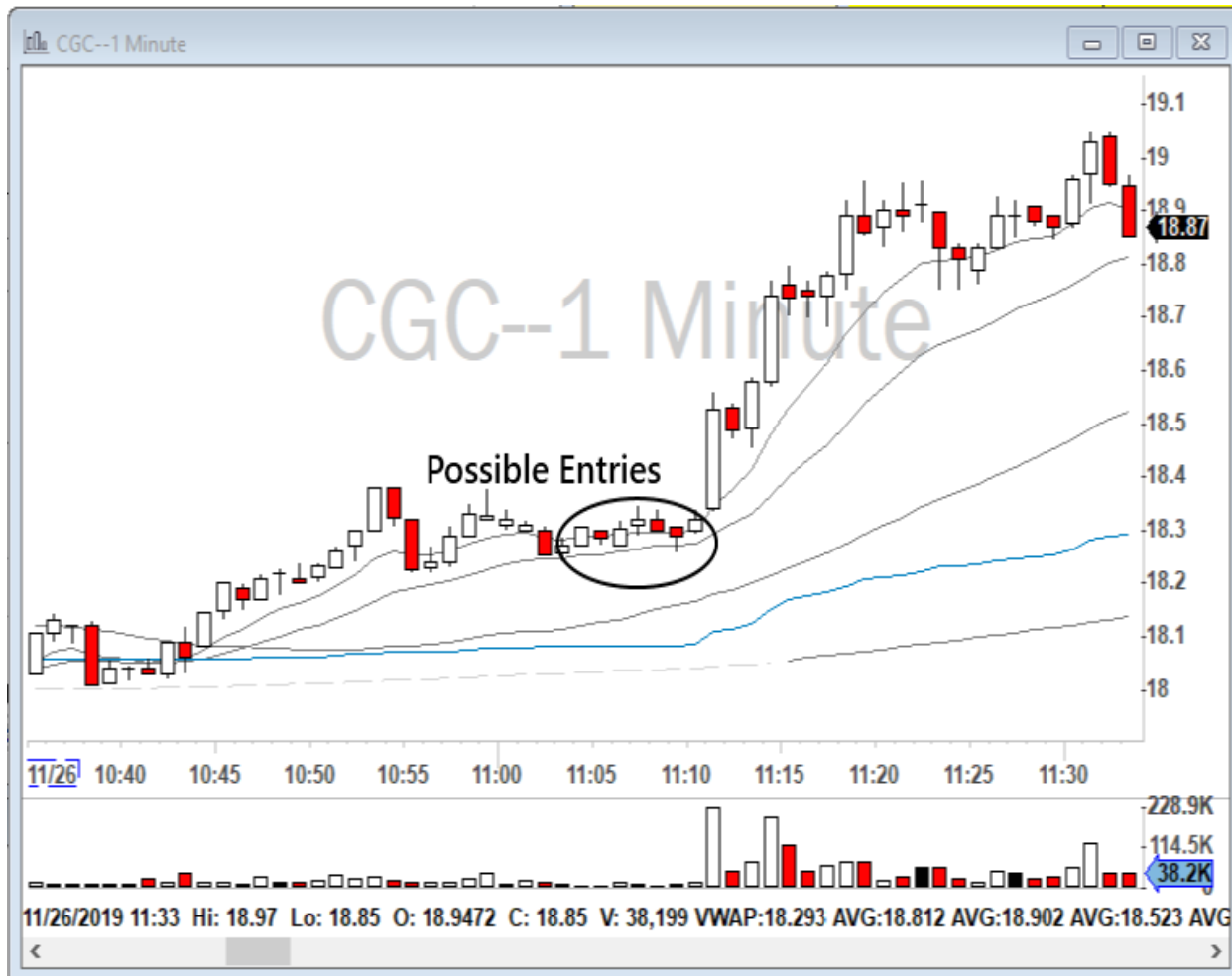
Examples for Type A



Examples for Type A



Types of ABCD patterns



Types of ABCD patterns

Type B

- -After an uptrend, the consolidation slightly slopping downward
- -Most of the volume comes at the break of the previous high
- -The pullback happens slowly till it reaches some moving average

Entry: 1)As close as possible to C

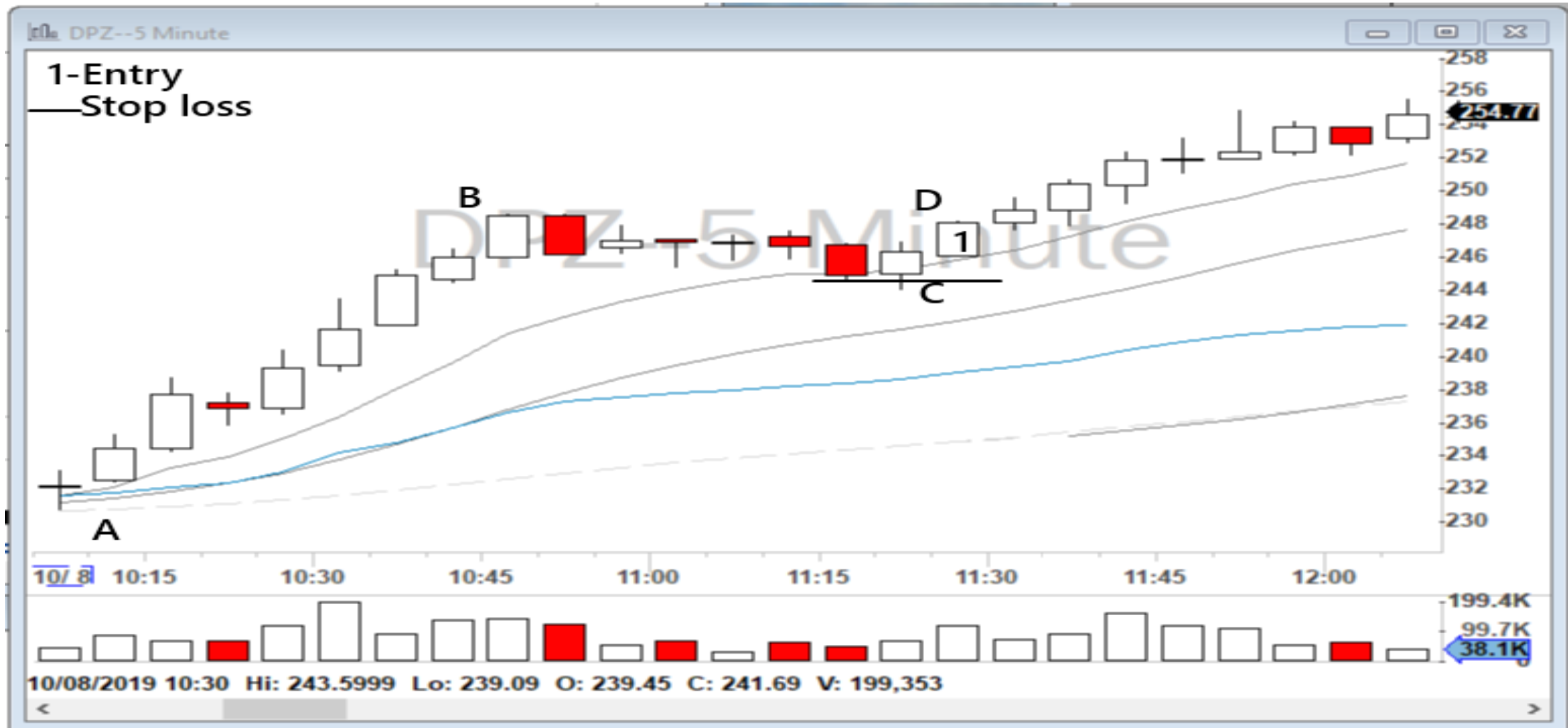
2)New high after the bounce of C

Stop loss: 1)With an early entry stop loss is the break of C

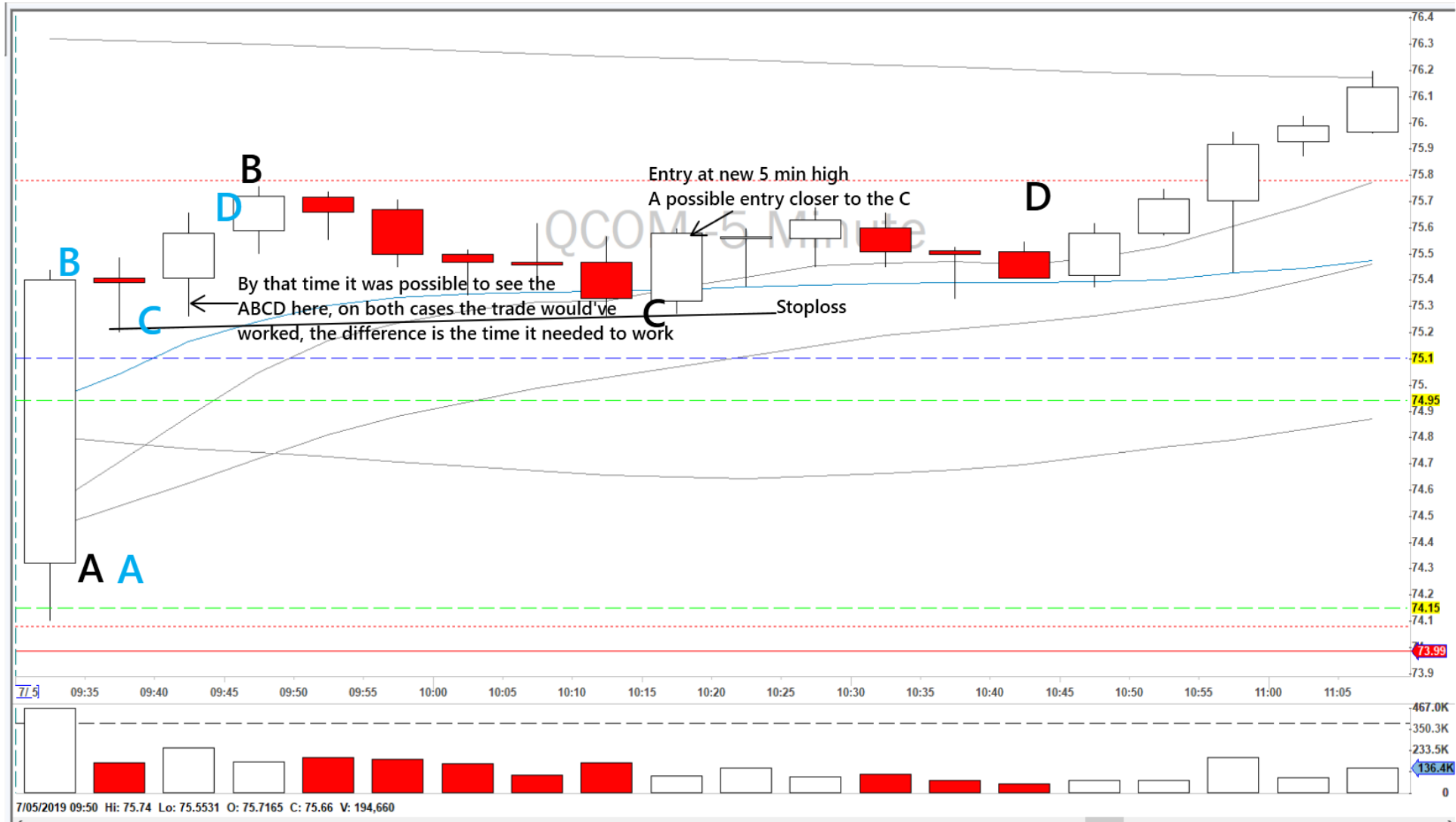
2)With a new high after the bounce of C stop loss is still the C level



Examples for Type B



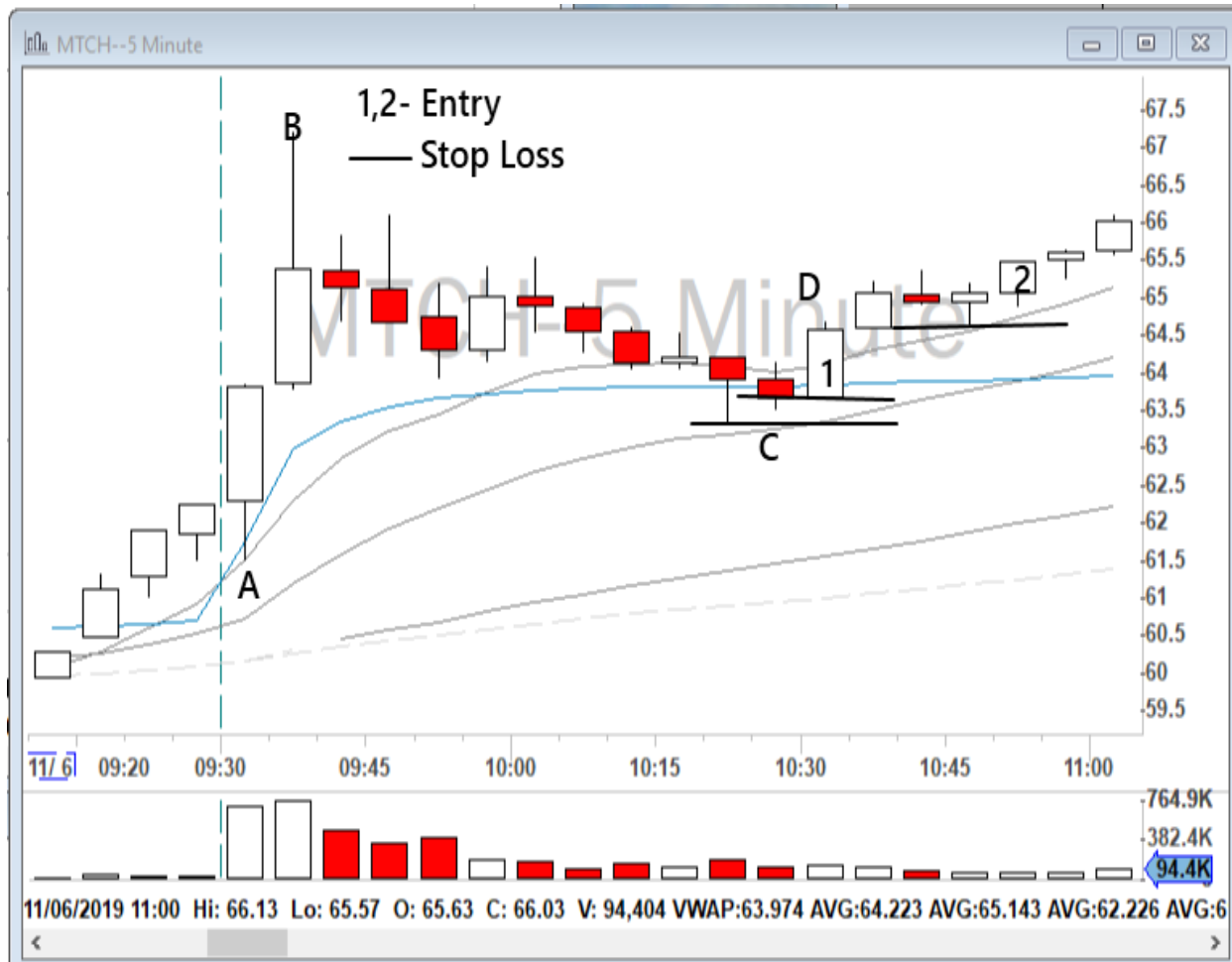
Examples for Type B



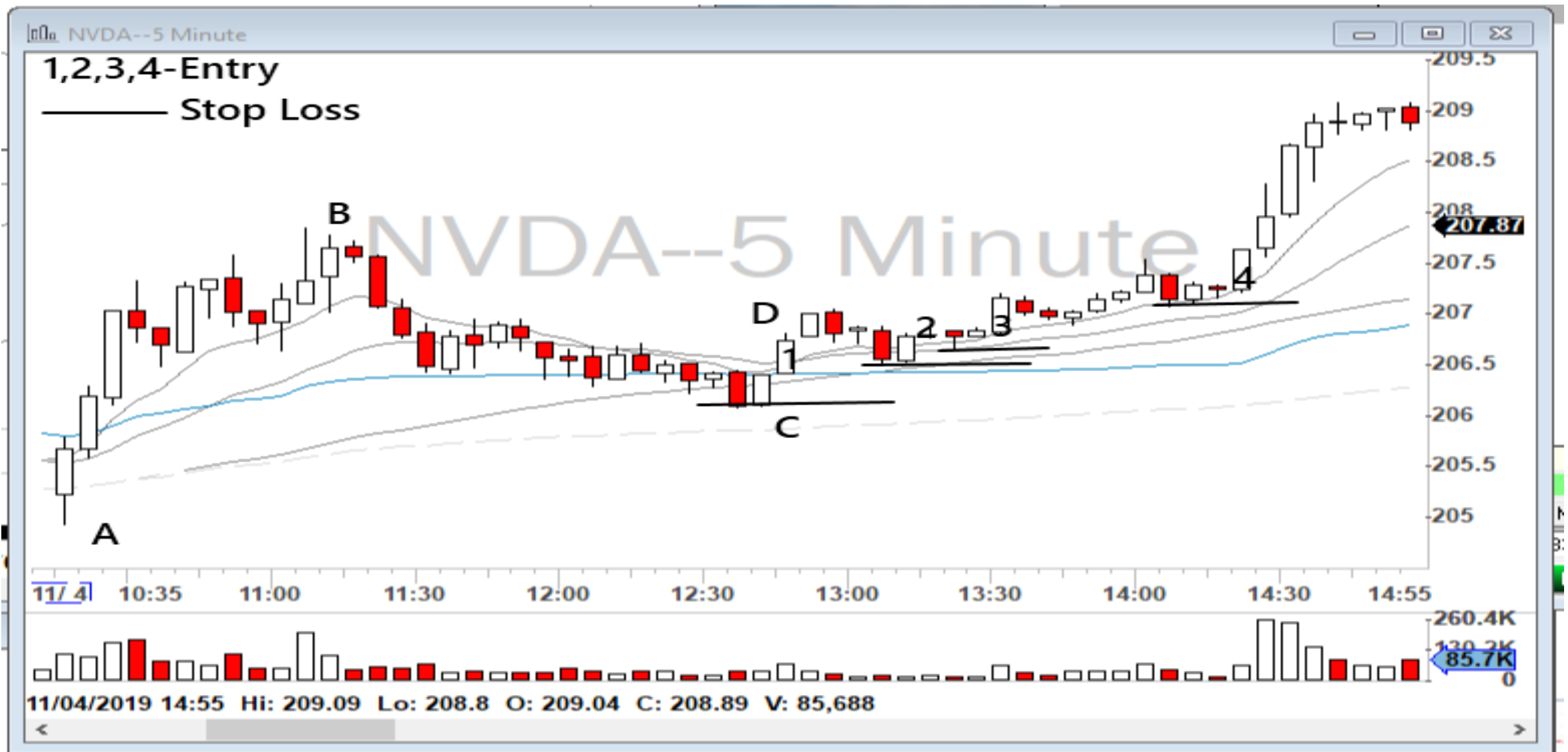
Examples for Type B



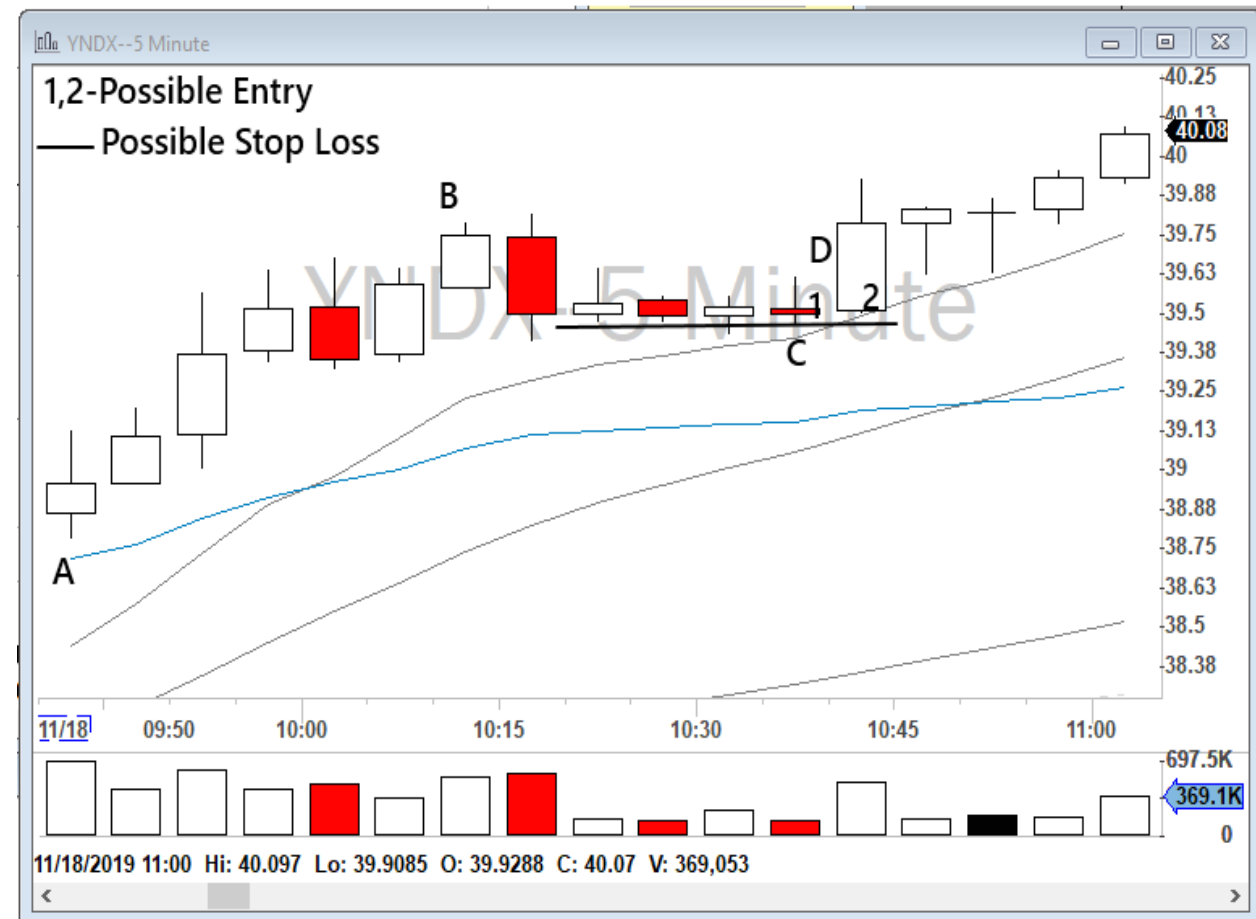
Examples for Type B



Examples for Type B



Examples for Type B



Types of ABCD patterns: Type C

Type C

- -After an uptrend, the pullback is parabolic
- -It's possible to enter at D, but not preferable
- -Wait for the stock to make W shape confirmation.

Entry: 1)New 1-minute high after the second bottom

2)The break of the high of the second consolidation

3)As close as possible to the second bottom if that second bottom is a support level

Stop loss: 1)The break of the original C

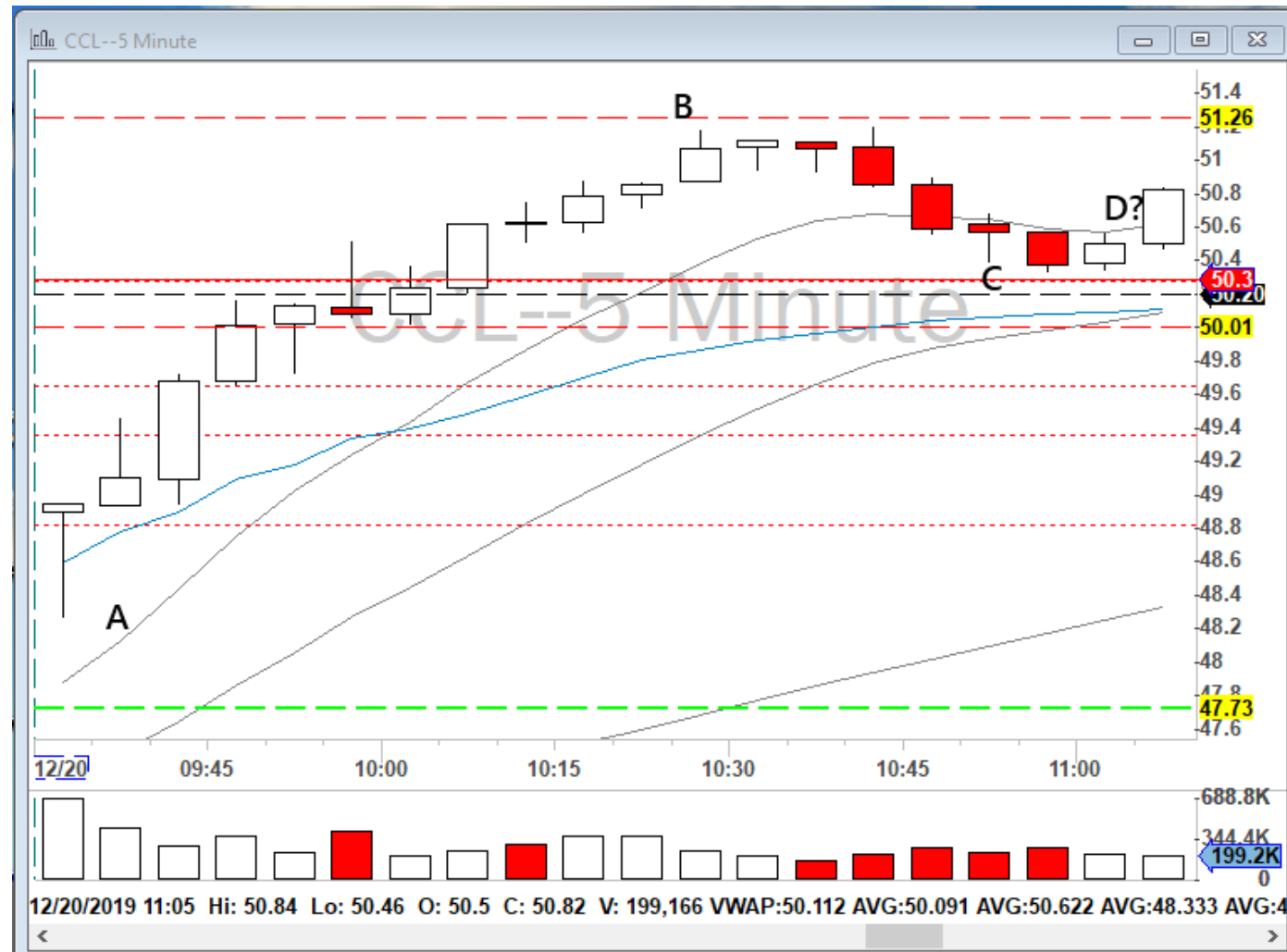
2)The break of the second bottom

3)New 1-minute low if the entry is the break of the high of the second consolidation



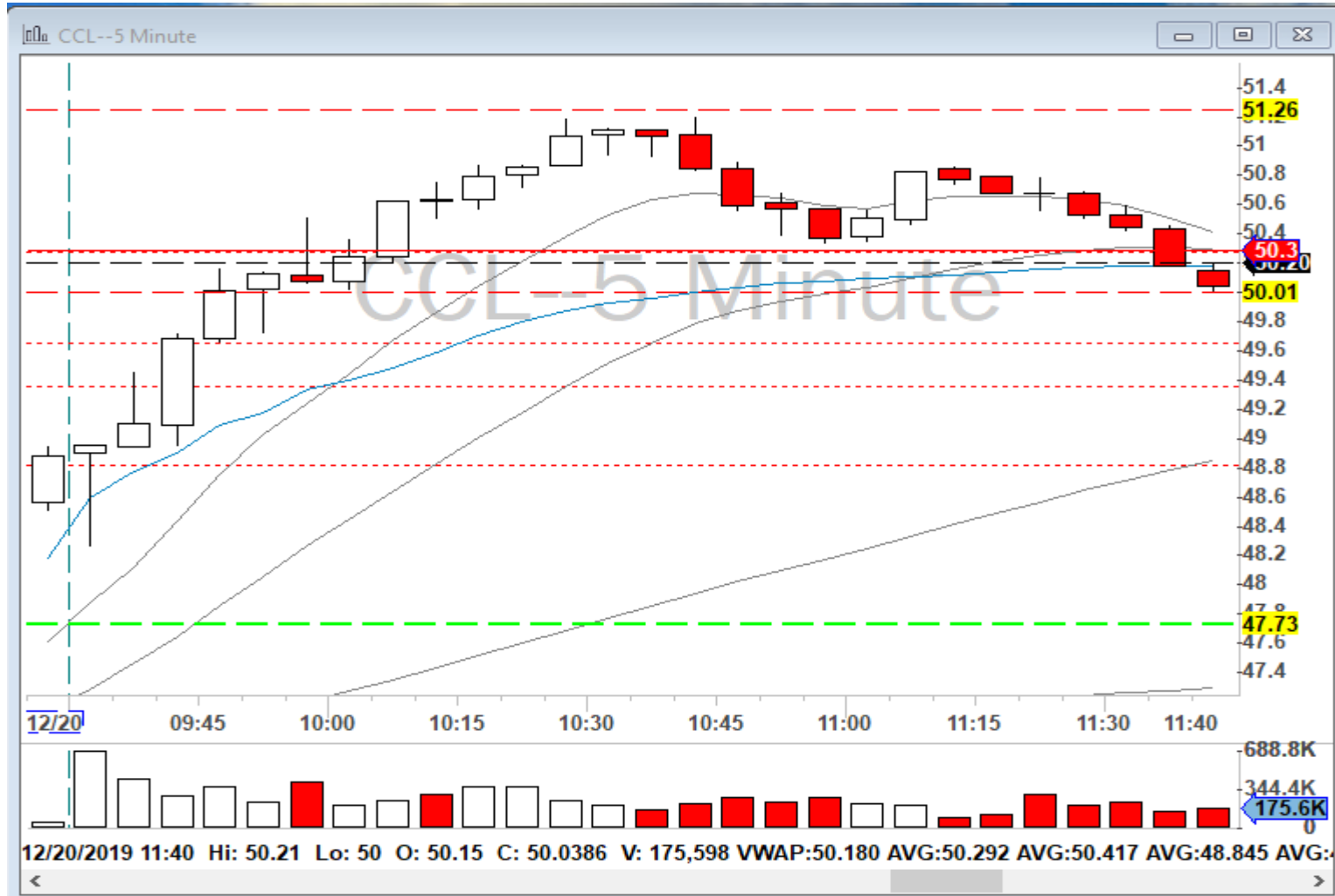
Types of ABCD patterns: Type C

Why waiting for the W/M shape on Type C?

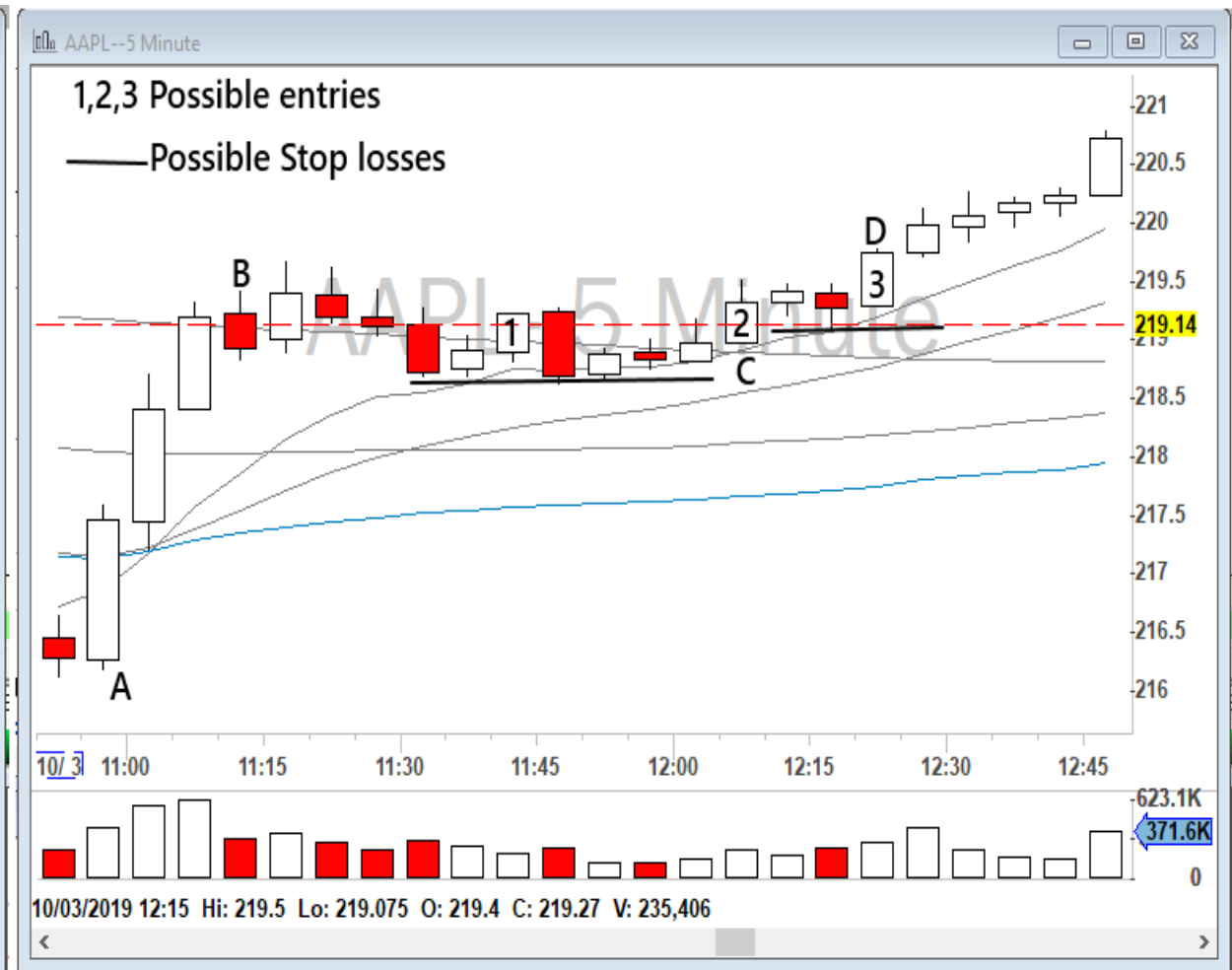


Types of ABCD patterns: Type C

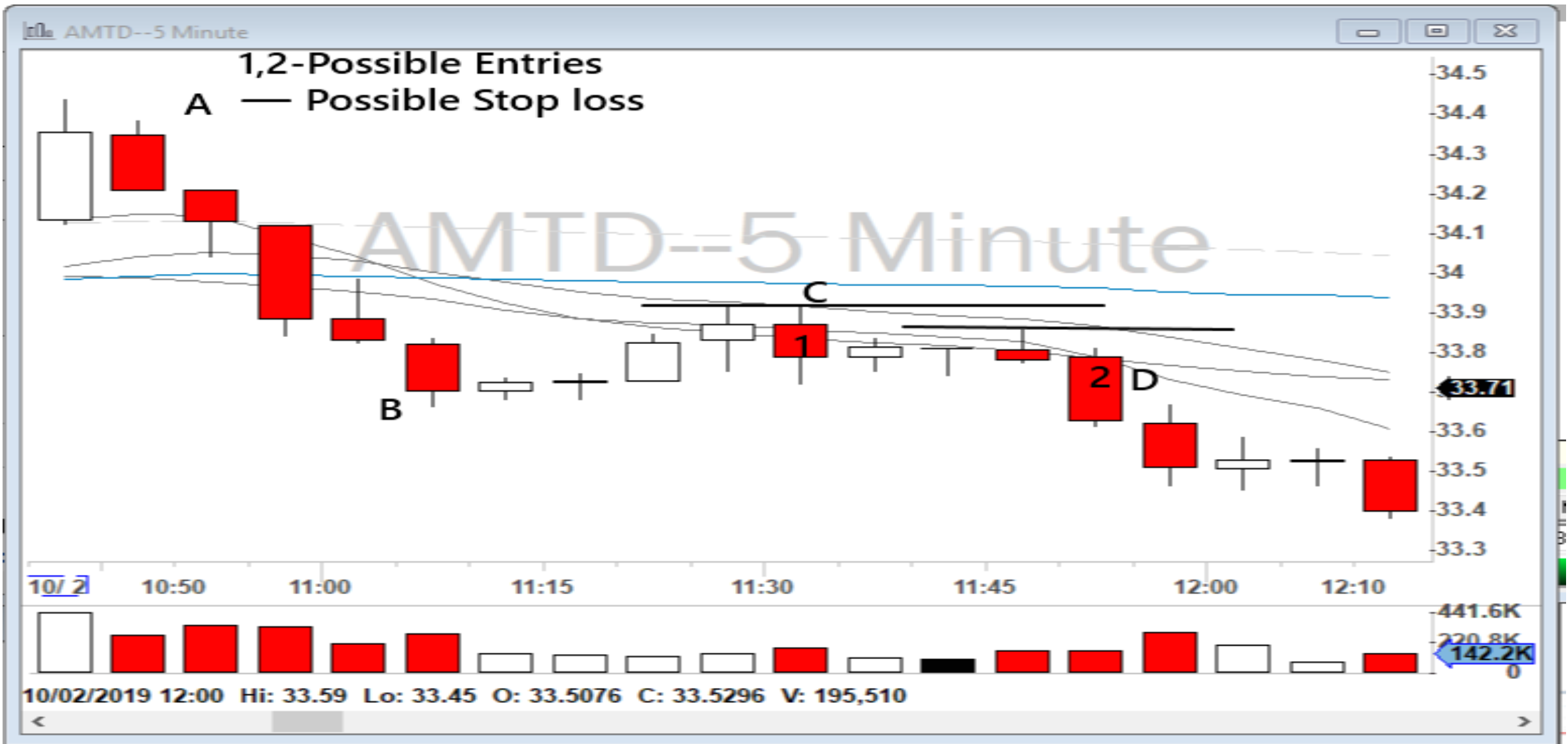
Why waiting for the W/M shape on Type C?



Examples for Type C



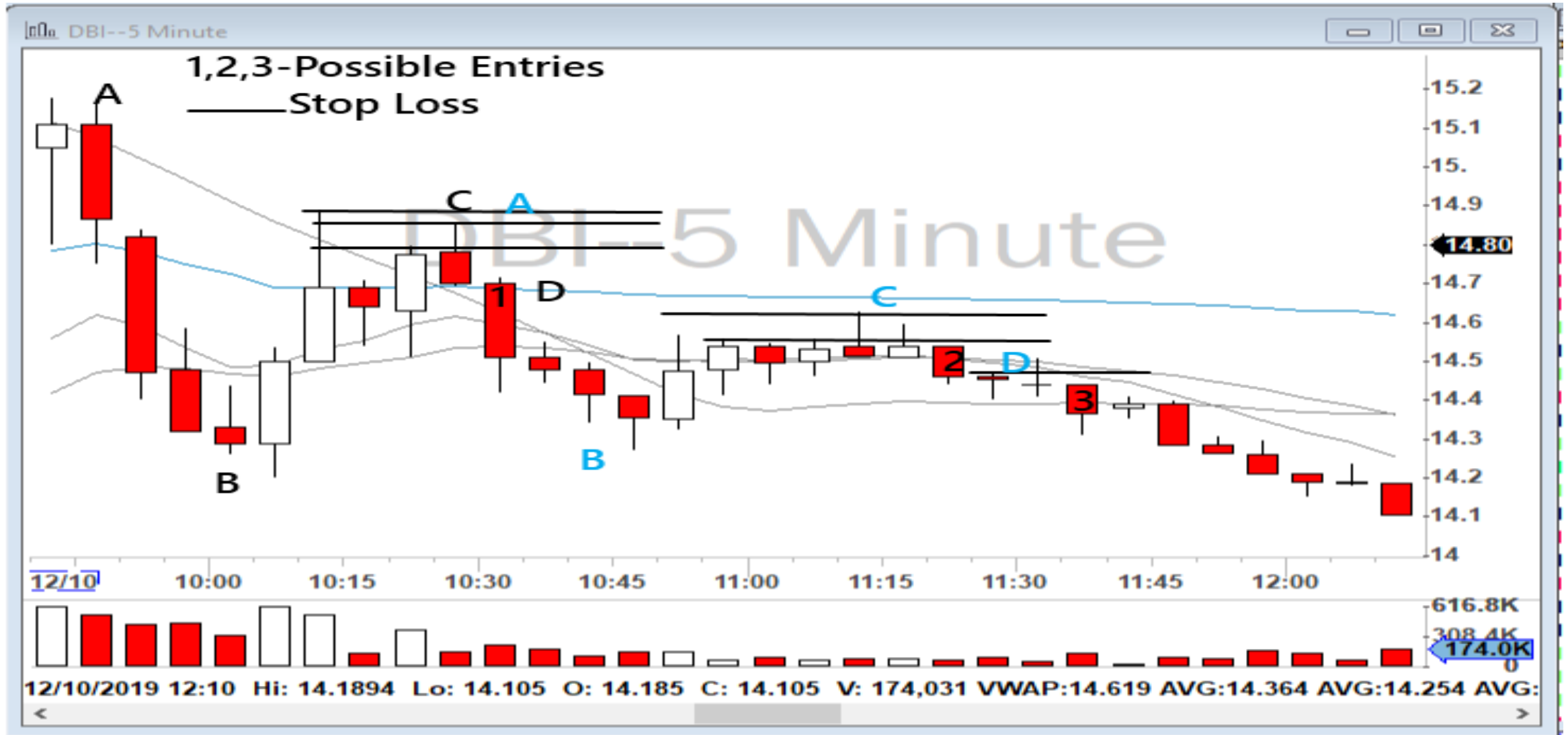
Examples for Type C



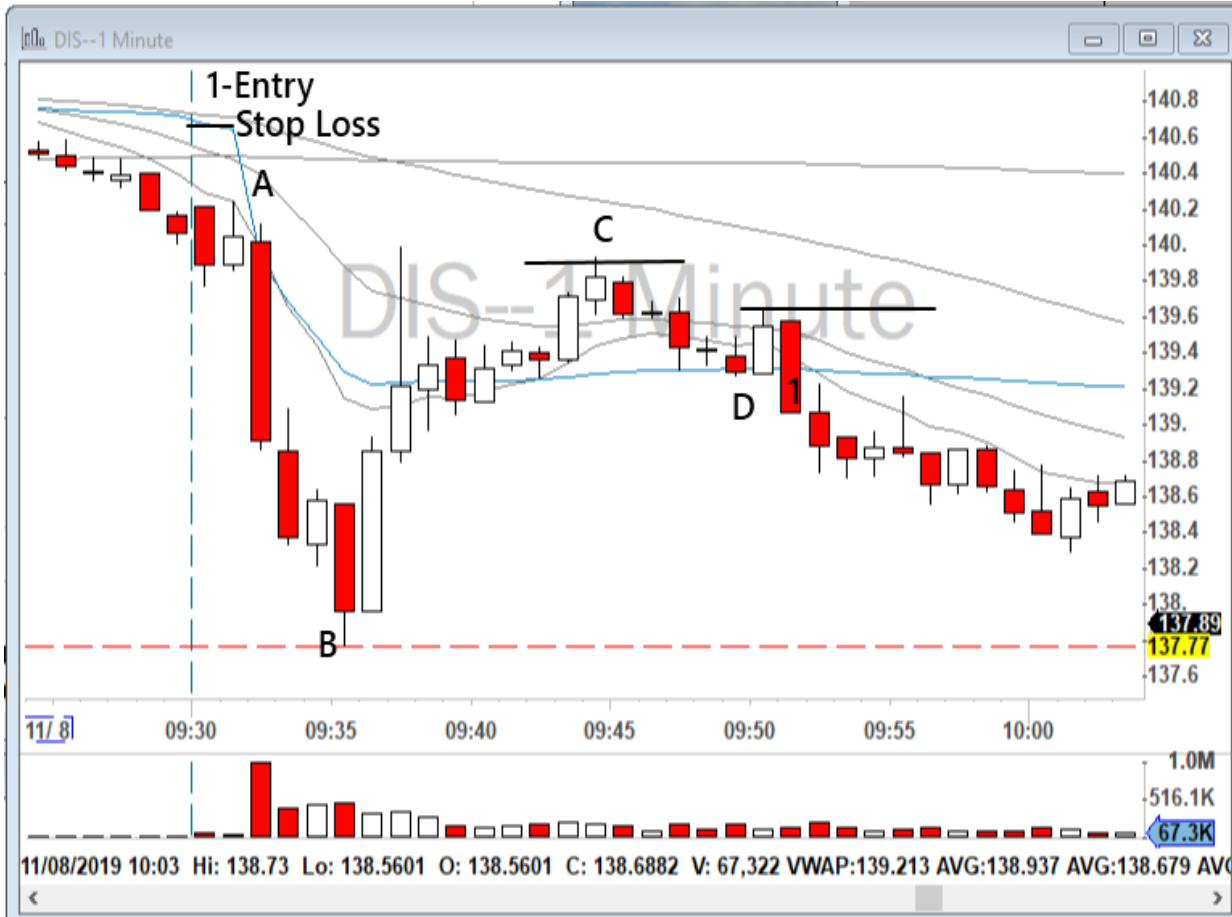
Examples for Type C



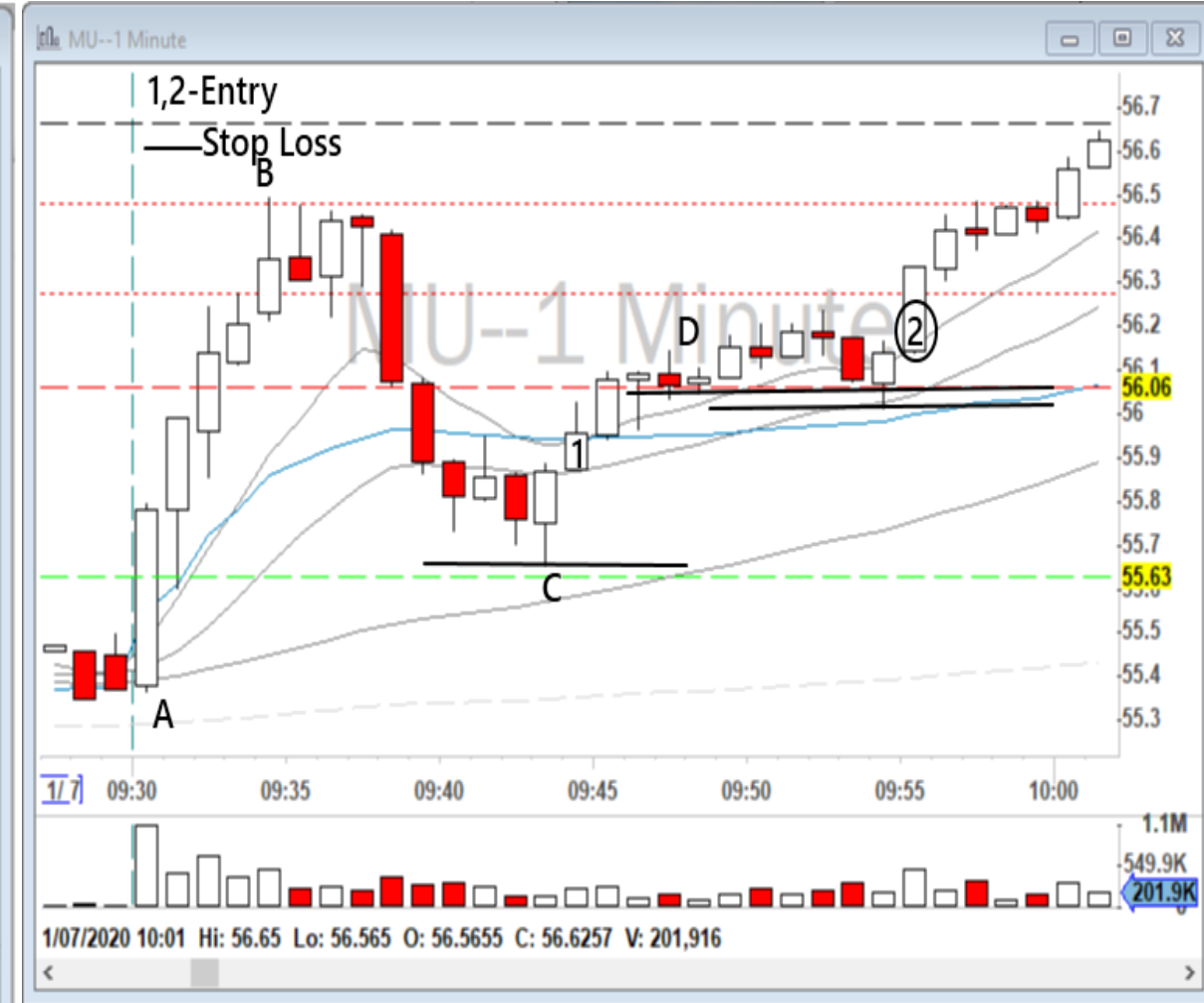
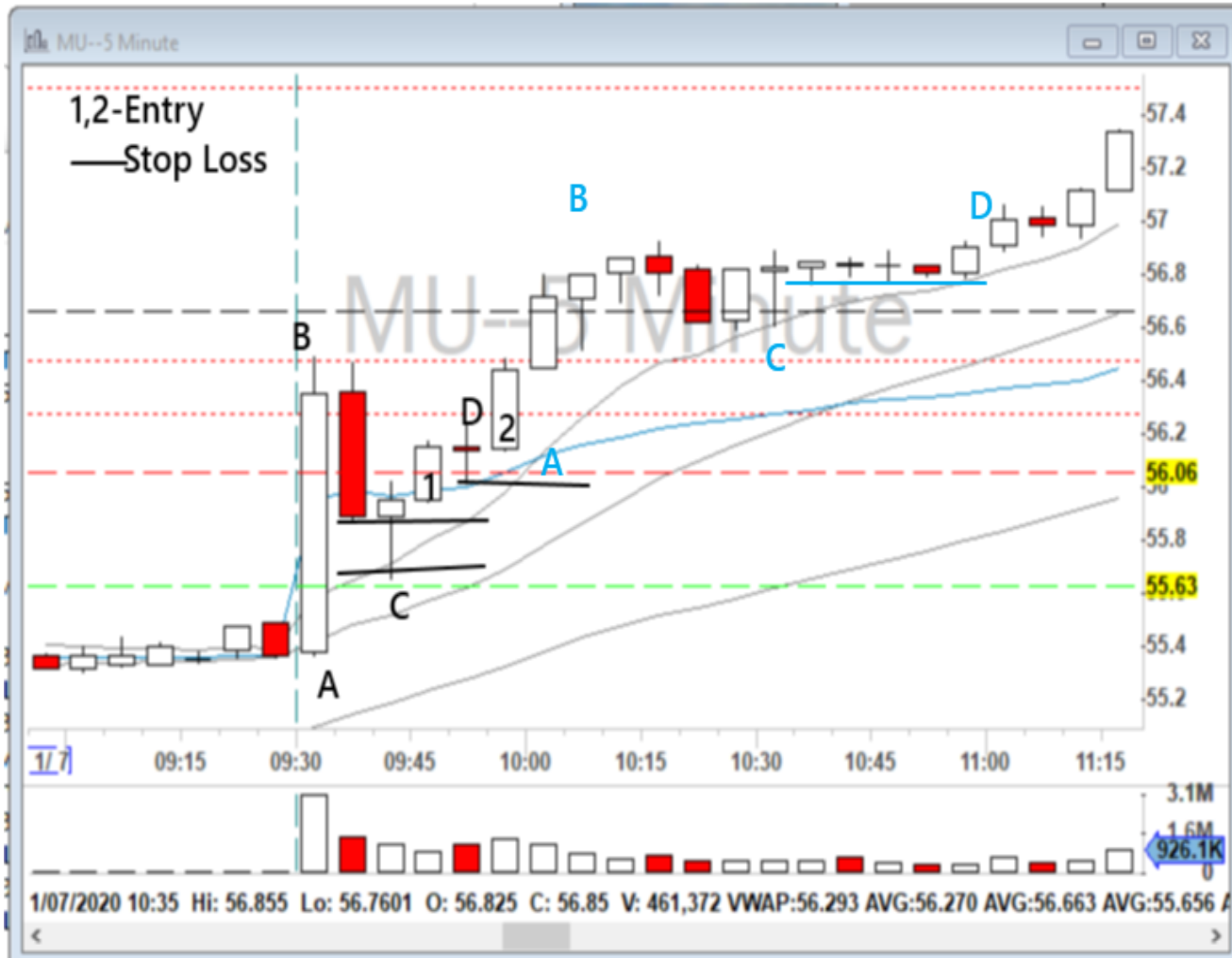
Examples for Type C



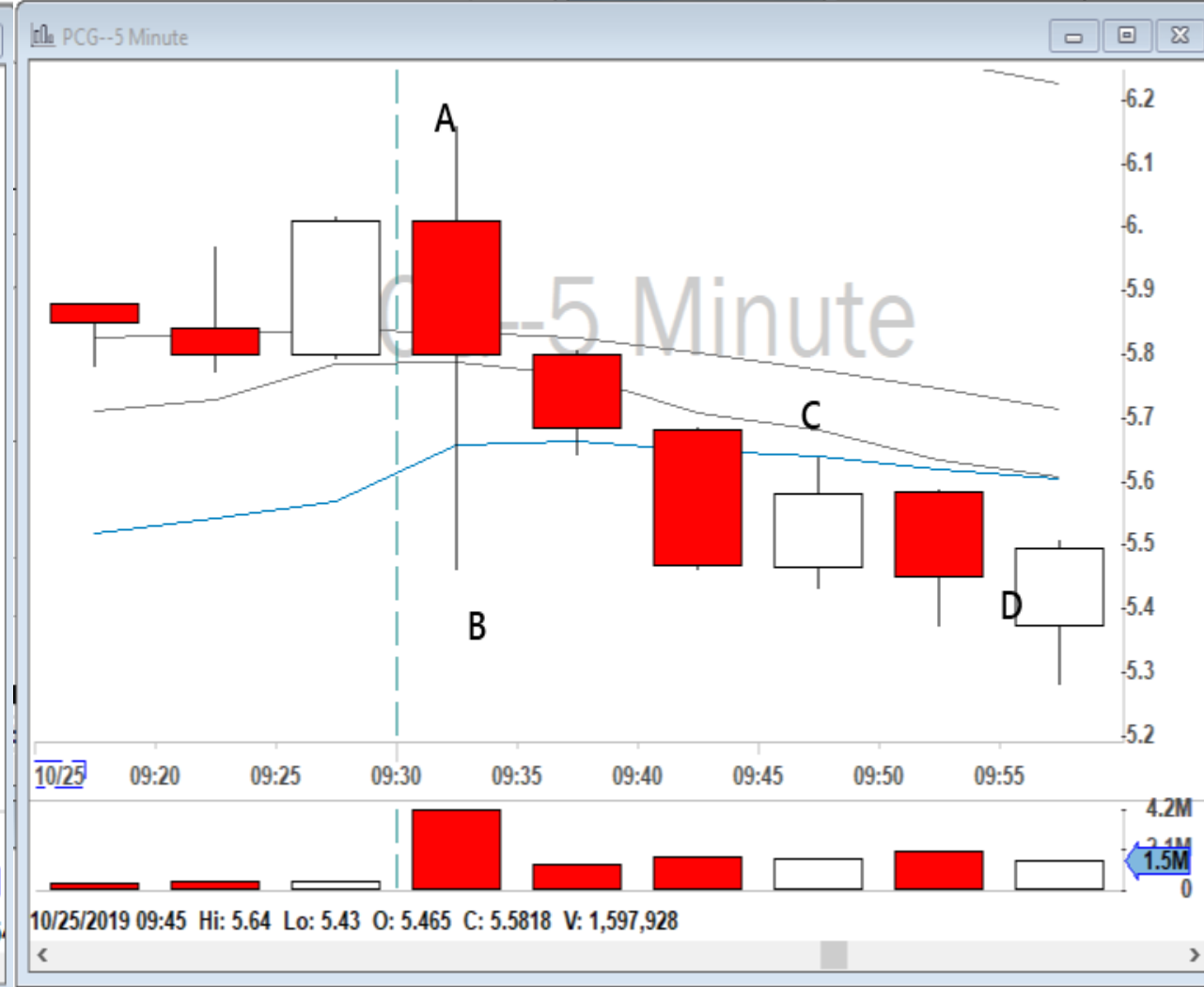
Examples for Type C



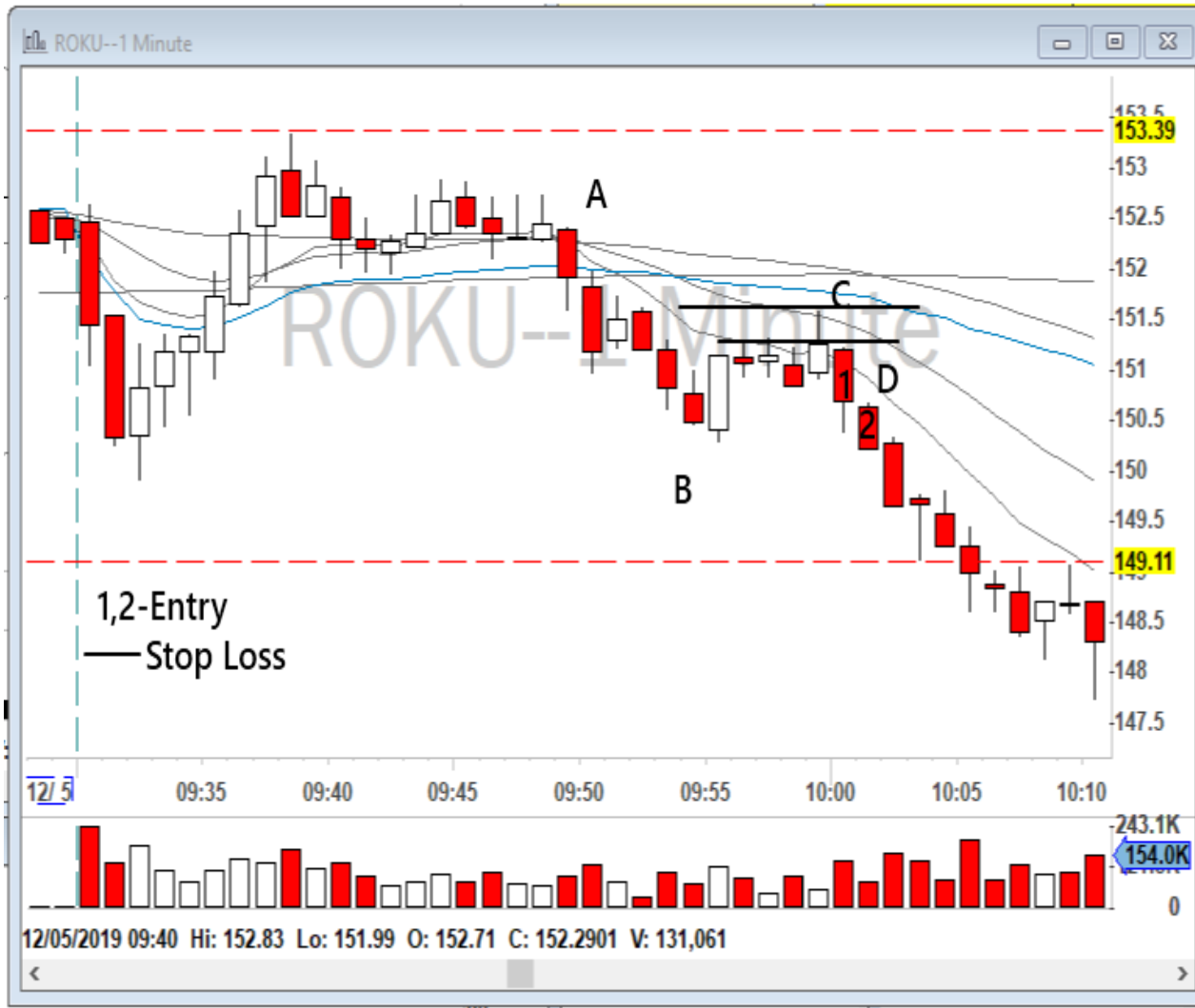
Examples for Type C



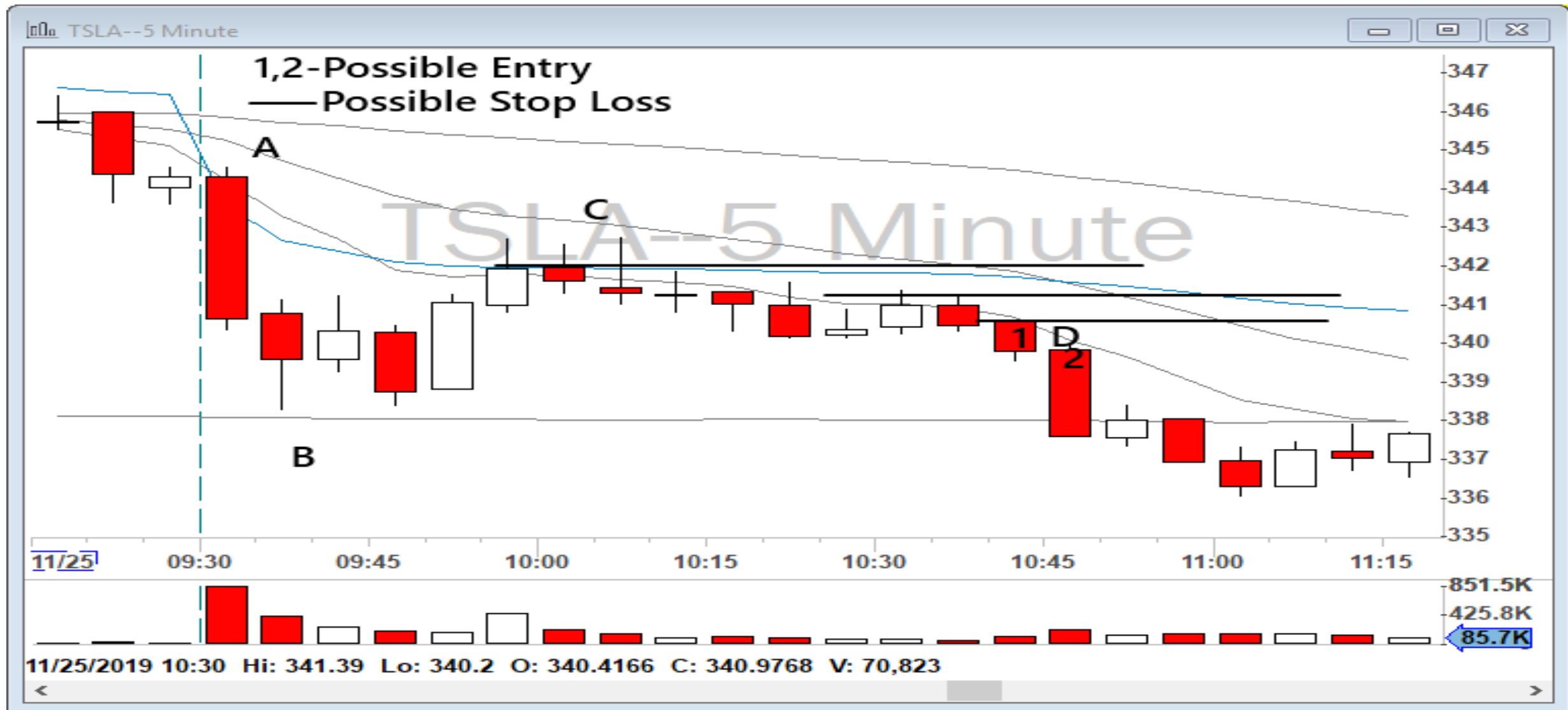
Examples for Type C



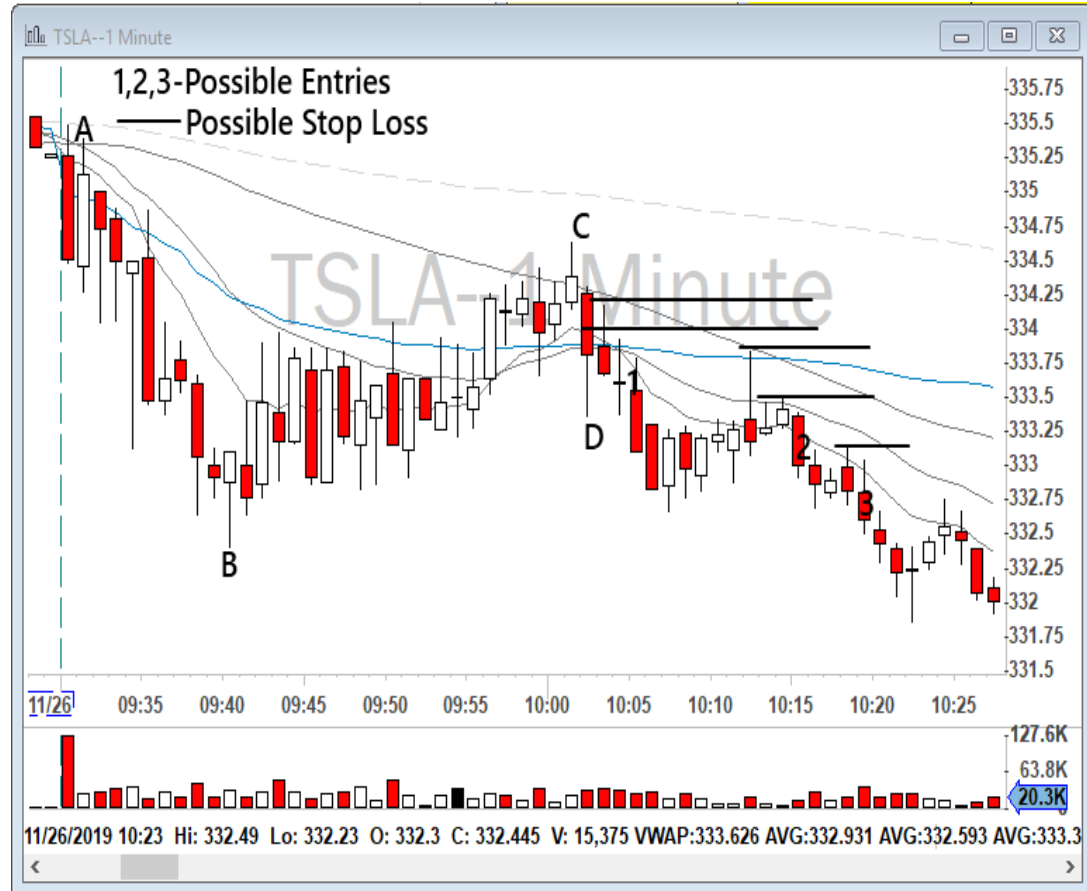
Examples for Type C



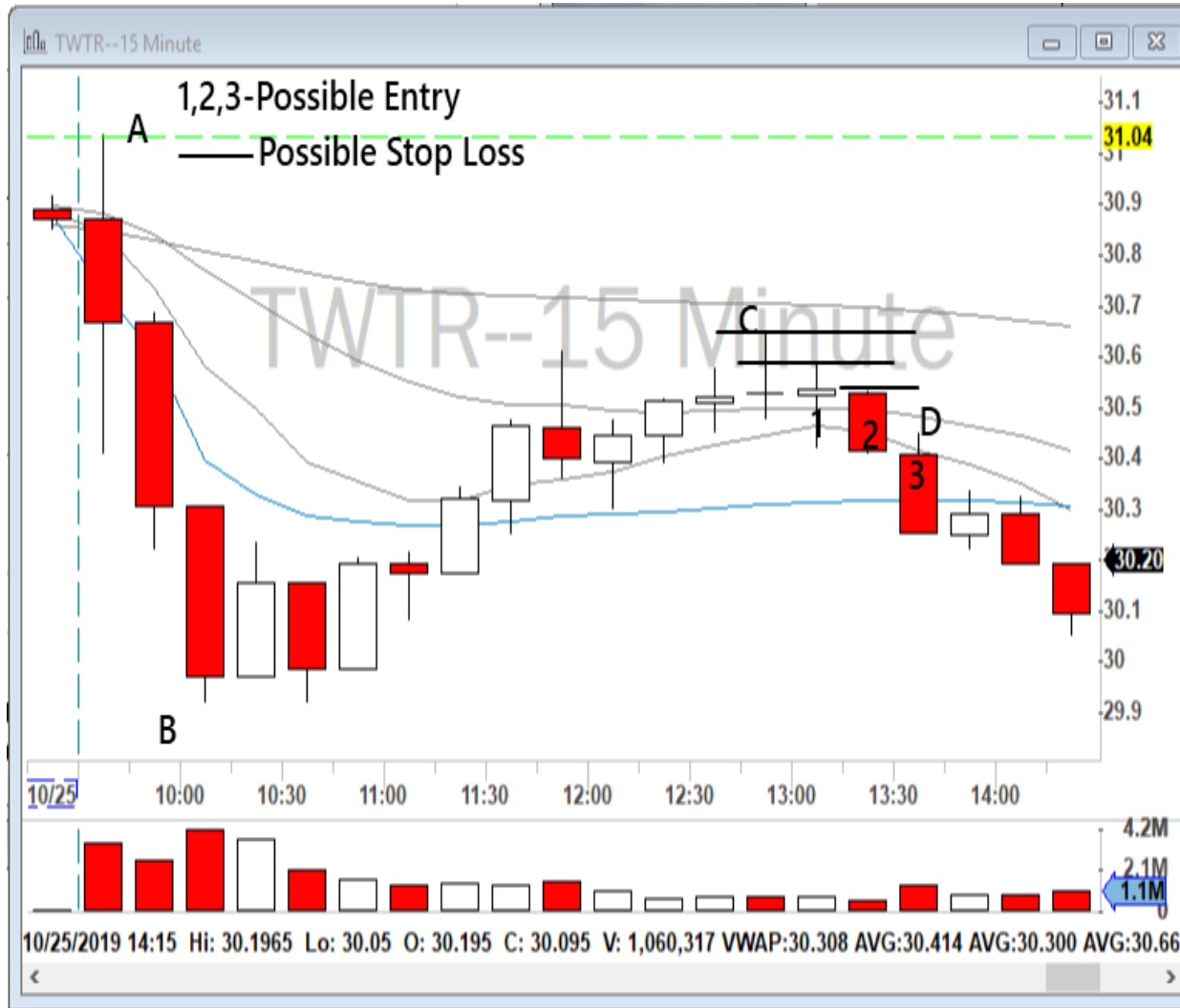
Examples for Type C



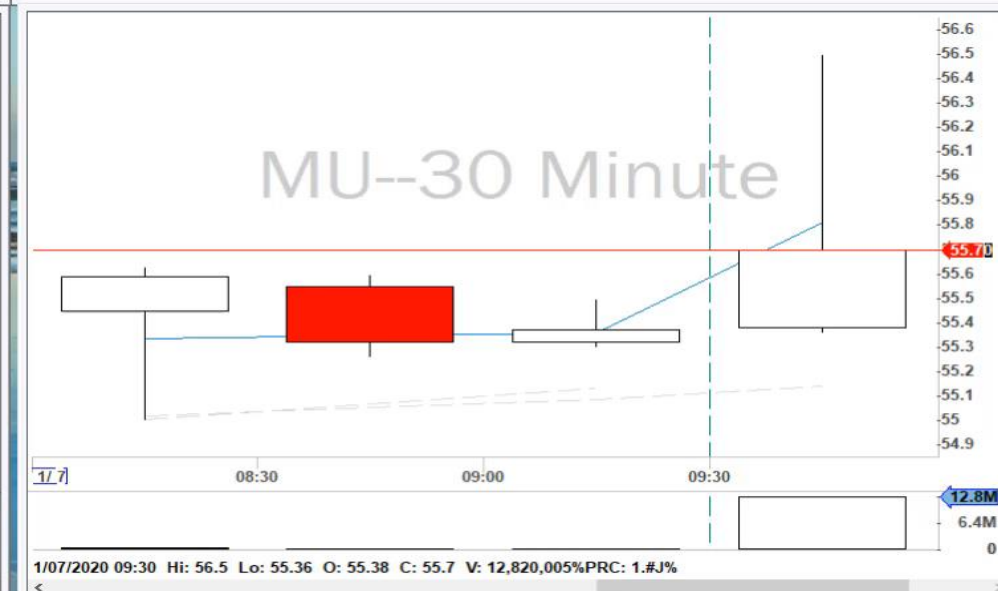
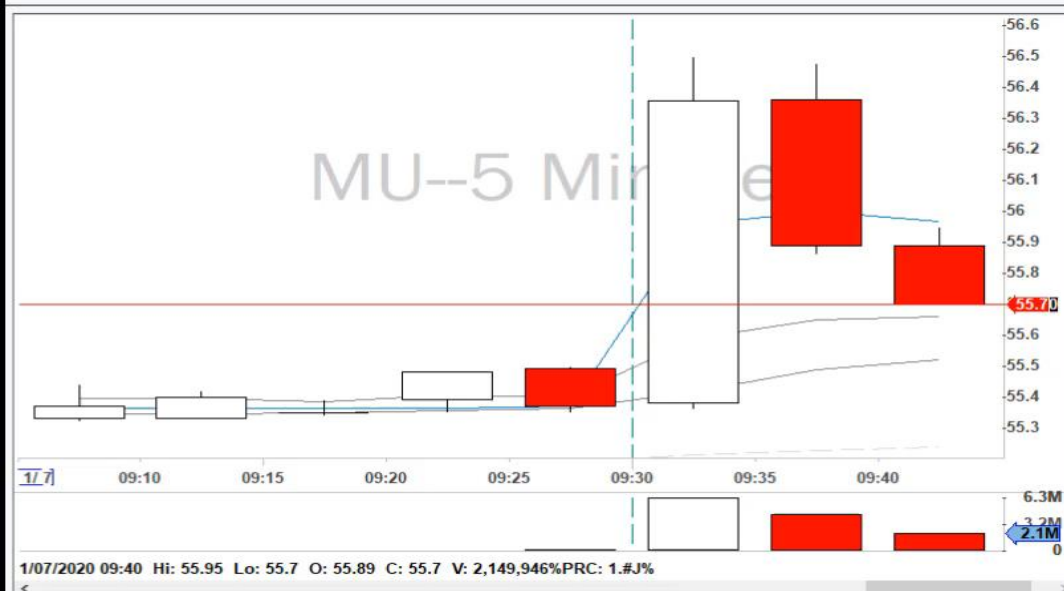
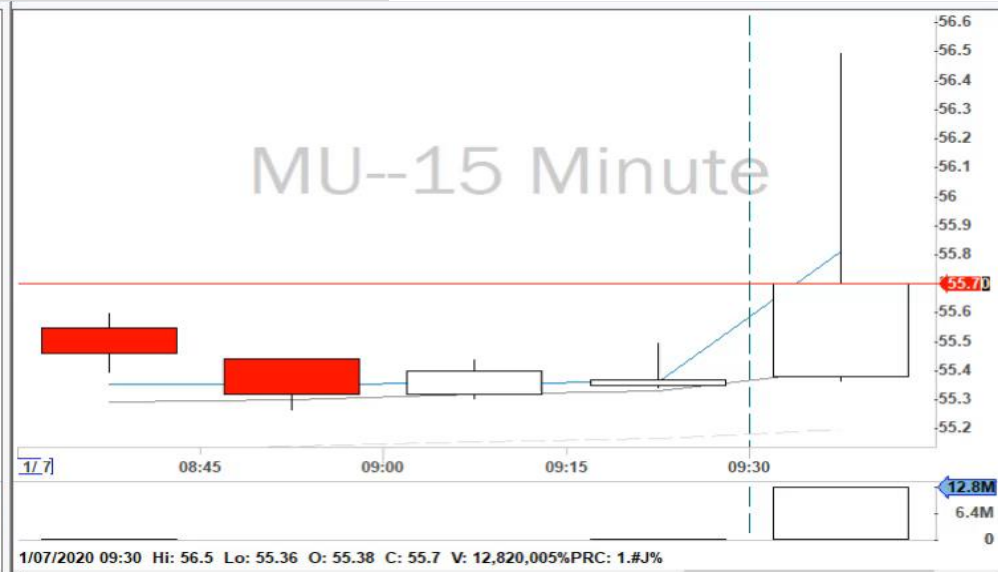
Examples for Type C



Examples for Type C



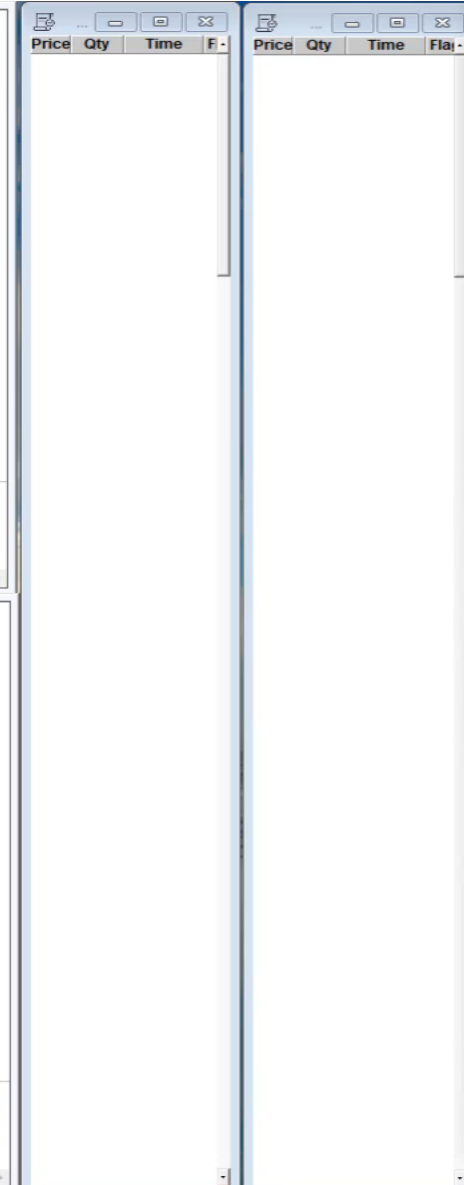
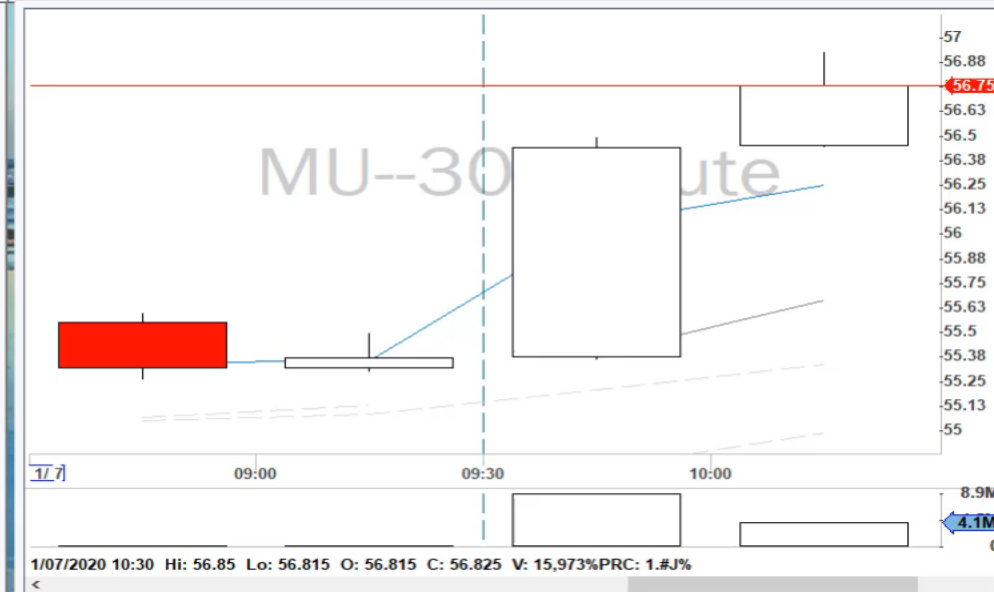
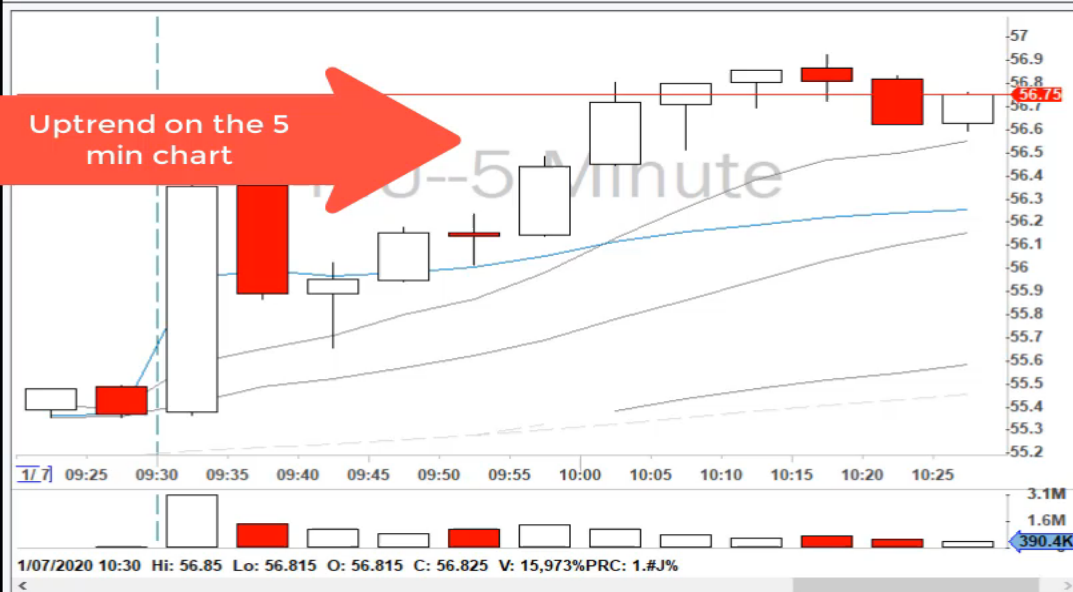
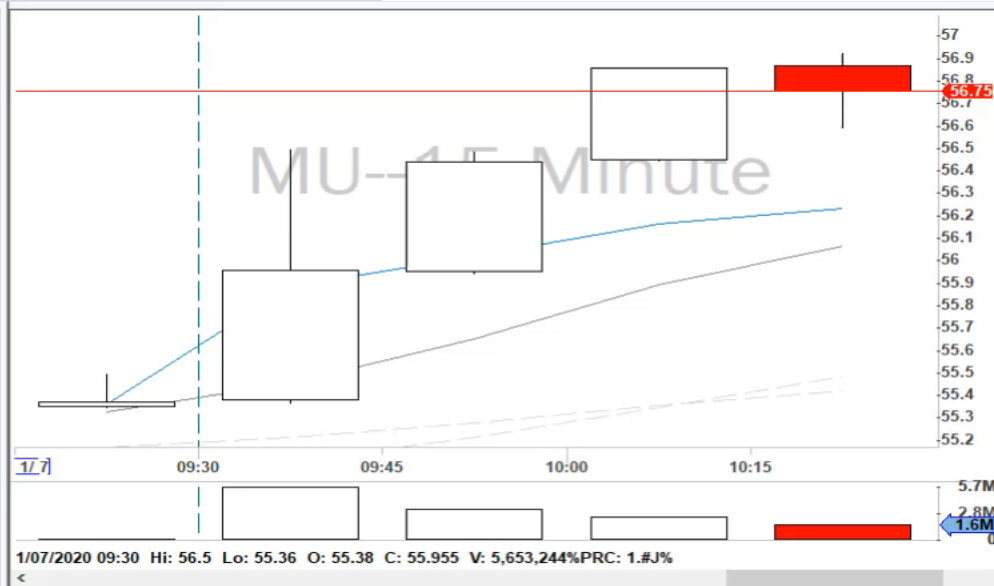
Replays:



Price	Qty	Time	F
55.691	0	09:43:04	I
55.691	0	09:43:04	I
55.7	4	09:43:04	F
55.705	3	09:43:04	I
55.7	0	09:43:03	I
55.7	1	09:43:03	I
55.7	1	09:43:03	F
55.7	1	09:43:03	I
55.7	4	09:43:03	I
55.69	0	09:43:03	I
55.69	0	09:43:03	F
55.7	3	09:43:02	I
55.7	3	09:43:02	I
55.7	1	09:43:02	I
55.7	1	09:43:02	I
55.7	1	09:43:02	I
55.7	1	09:43:02	I
55.7	0	09:43:02	F
55.7	0	09:43:02	F
55.7	1	09:43:02	I
55.7	1	09:43:02	I
55.7	0	09:43:02	F
55.7	1	09:43:02	I
55.7	1	09:43:02	F
55.7	1	09:43:02	F
55.7	1	09:43:02	F
55.7062	0	09:43:02	I
55.7	0	09:43:02	I
55.705	1	09:43:02	I
55.701	0	09:43:02	I
55.705	0	09:43:02	I
55.7	1	09:43:02	I
55.7	1	09:43:02	I
55.7	1	09:43:02	I
55.7	1	09:43:02	I
55.7	3	09:43:02	I
55.7	1	09:43:02	I
55.7	1	09:43:02	I
55.7	1	09:43:02	I
55.7	1	09:43:02	I
55.7	0	09:43:02	I
55.7	1	09:43:02	I
55.7	1	09:43:02	I
55.7	1	09:43:02	I
55.7	2	09:43:02	I
55.7	9	09:43:02	I
55.7	0	09:43:02	F
55.7	0	09:43:02	F
55.7	8	09:43:02	I
55.7	0	09:43:02	I
55.7	0	09:43:02	I
55.7	0	09:43:02	F
55.7	1	09:43:02	F
55.7	1	09:43:02	I
55.7	1	09:43:02	I
55.7	0	09:43:02	F



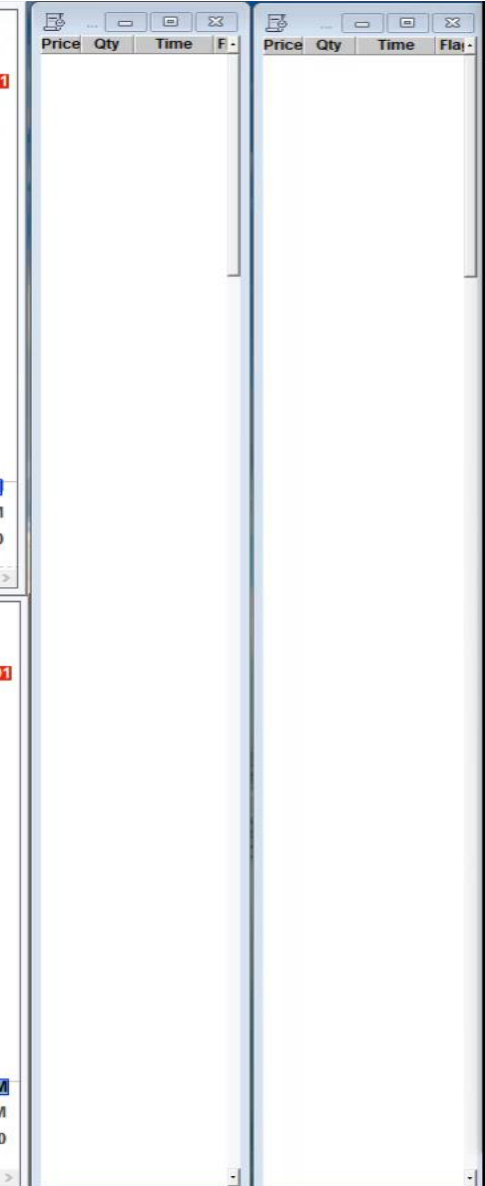
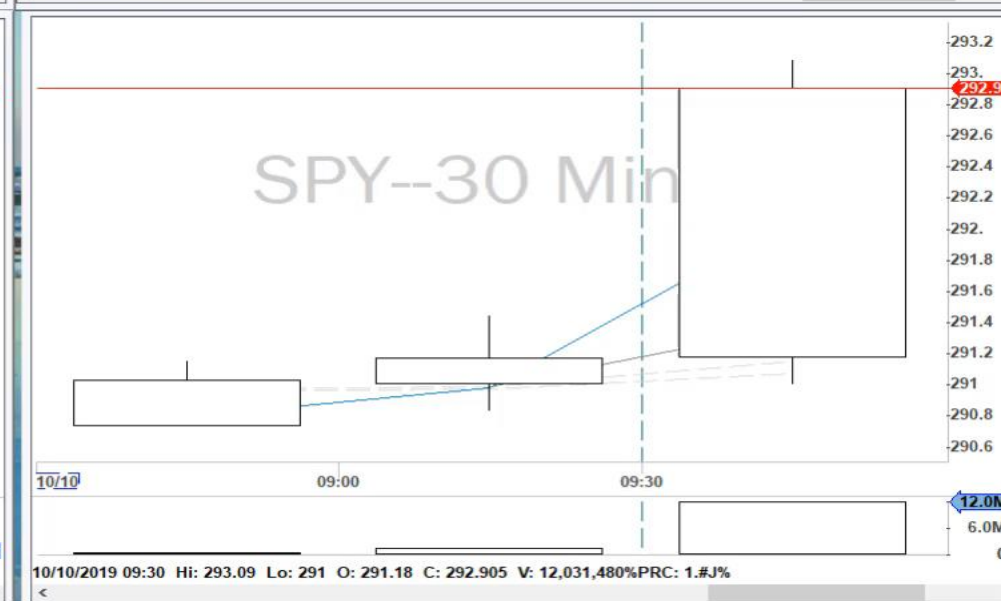
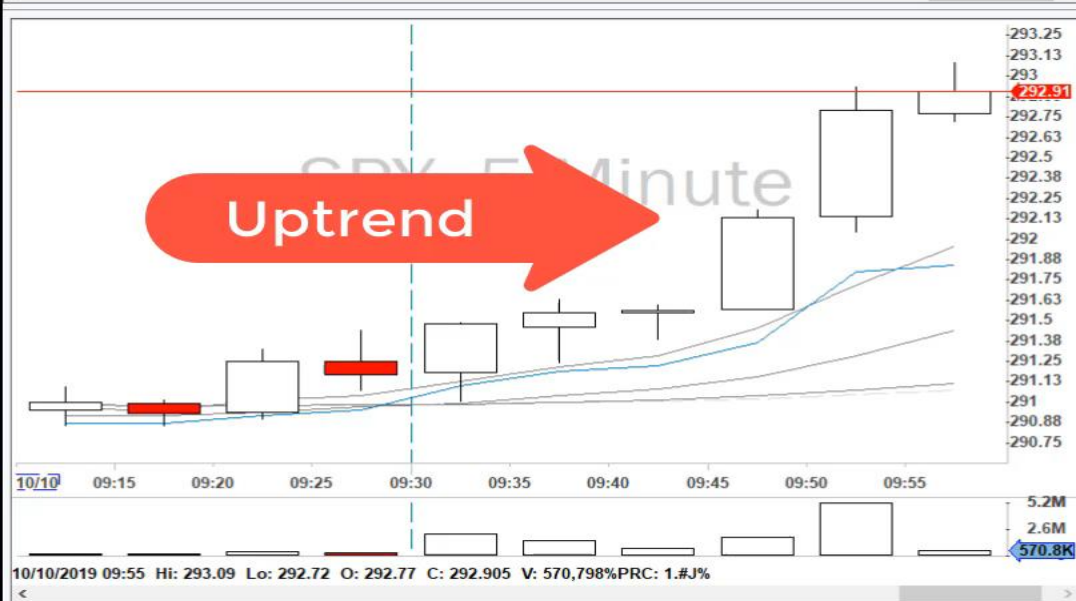
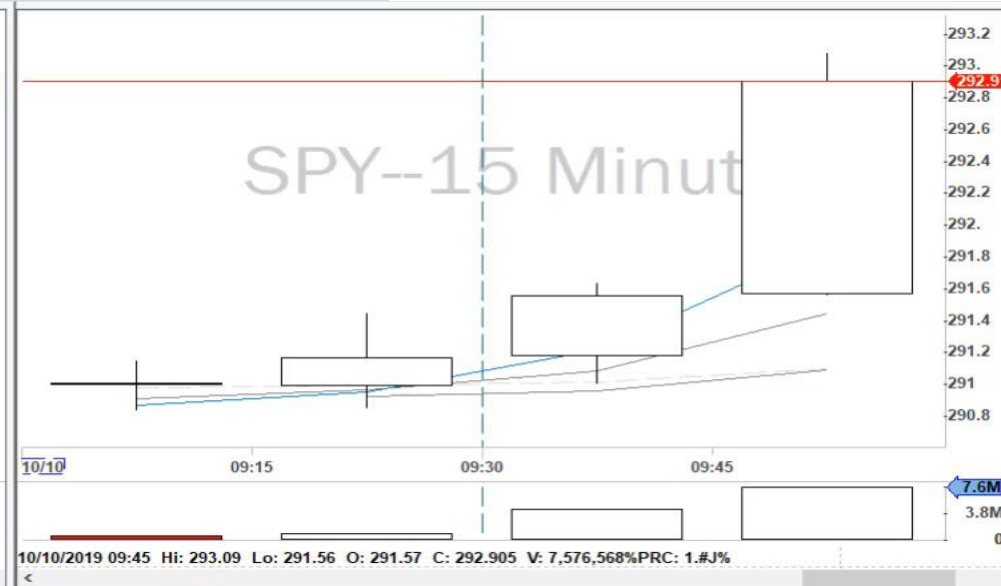
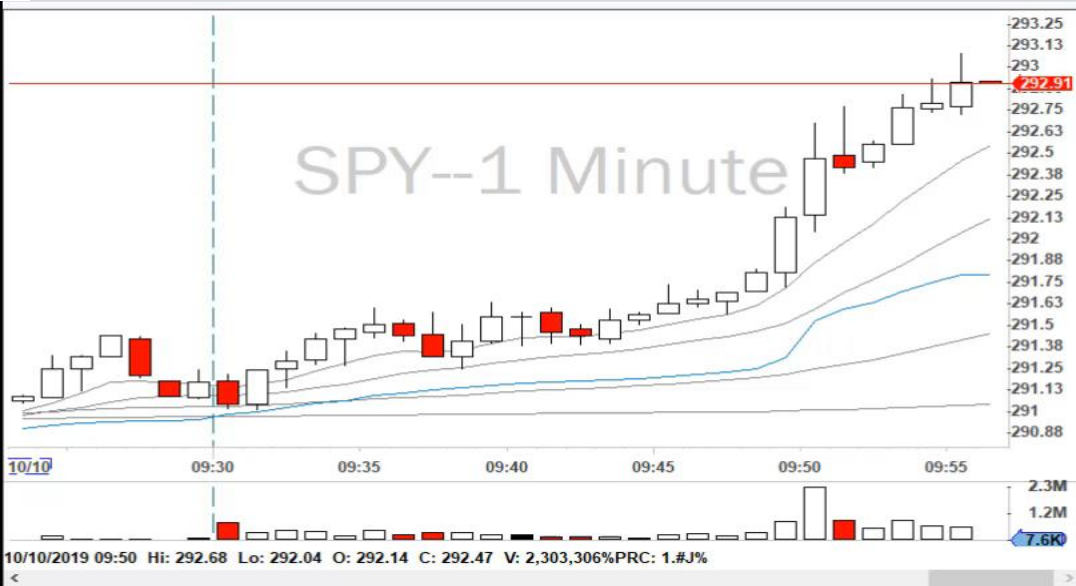
Replays:



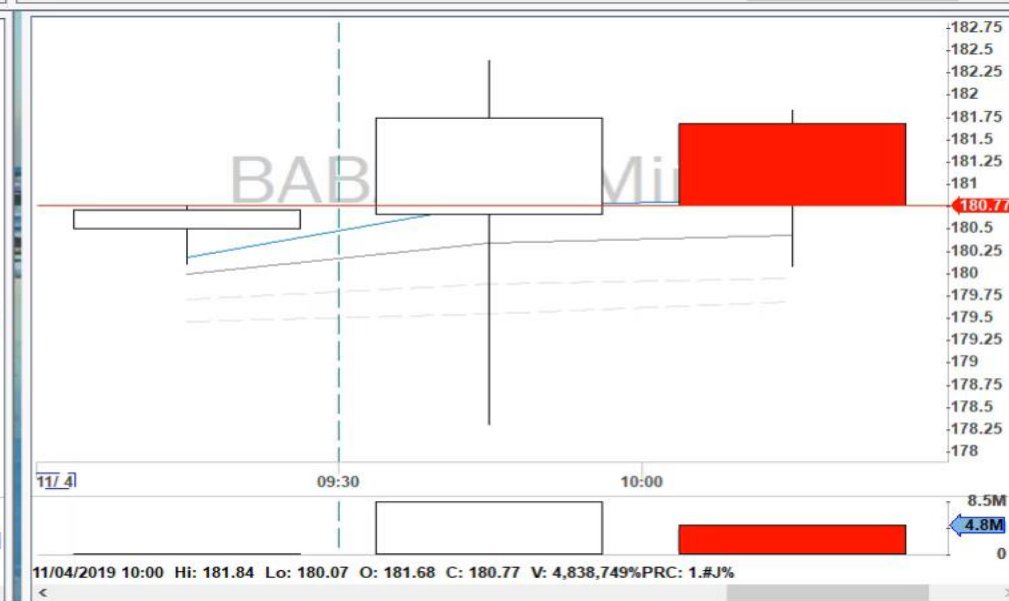
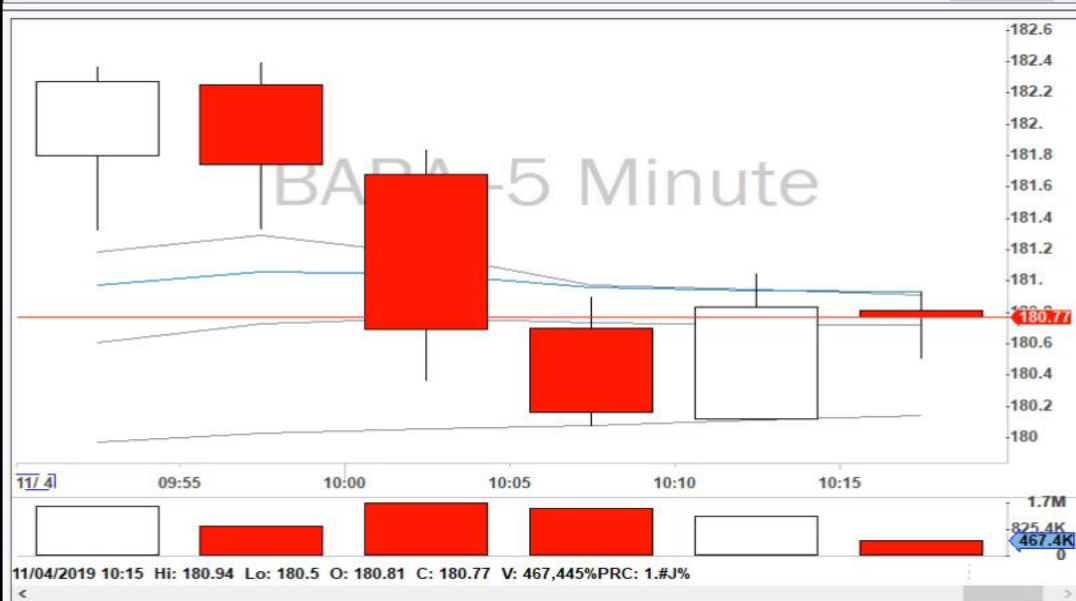
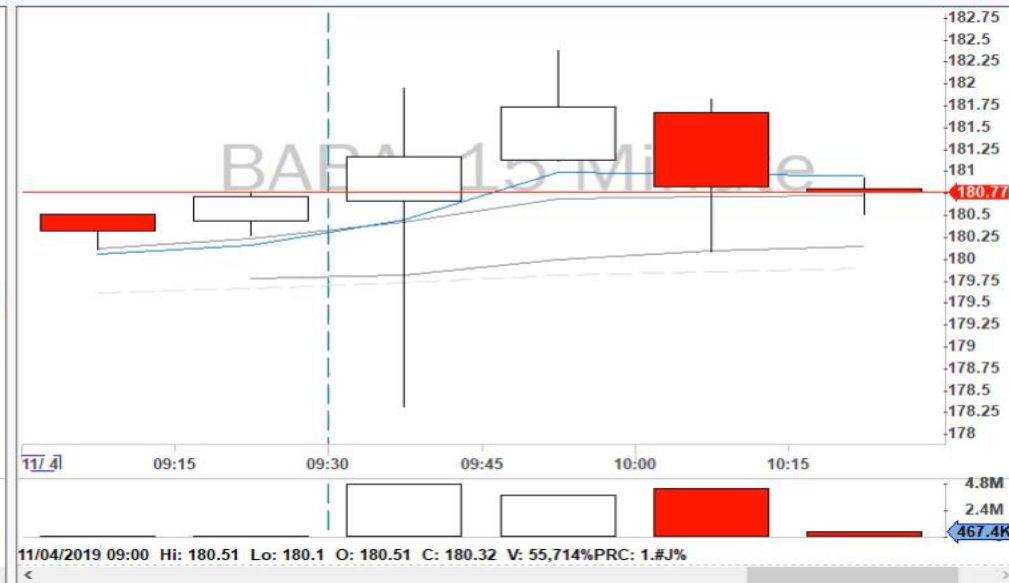
Replays:



Replays:



Replays:

[illegible]