



# How to Day Trade for a Living

A Beginner's Guide to Tools  
and Tactics, Money  
Management, Discipline and  
Trading Psychology

© Andrew Aziz, Ph.D.

Day Trader at Bear Bull Traders  
[www.bearbulltraders.com](http://www.bearbulltraders.com)

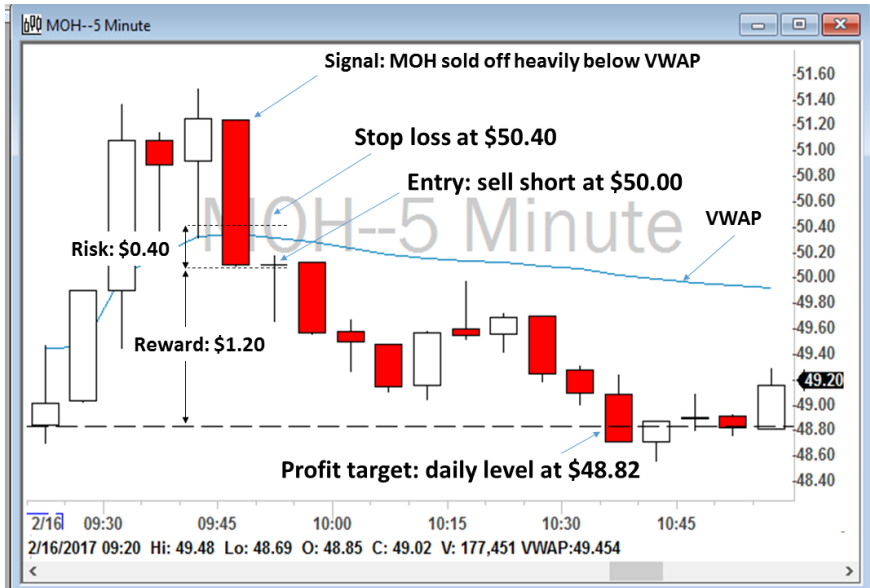
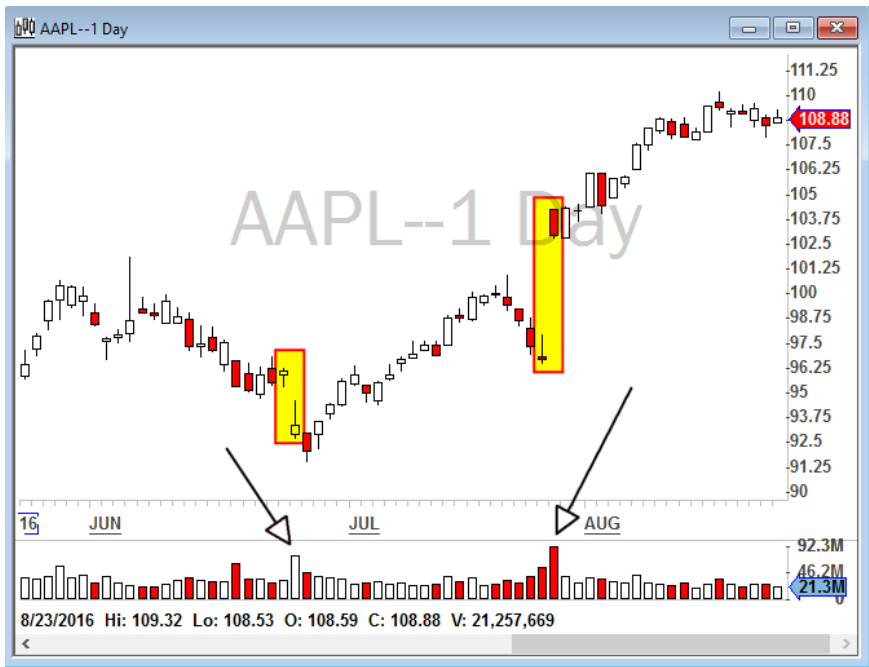


Figure 3.1 - Screenshot of my trade on MOH on February 16, 2017 showing my entry, exit and stop loss. As you can see, the profit-to-loss ratio is 3 to 1.



Figure 3.2 - Screenshot of MOH on February 16, 2017. This is the example of a bad risk/reward. As you can see, the profit-to-loss ratio is less than 2 to 1 and is not tradeable. You have missed the opportunity.



**Figure 4.1 - AAPL daily chart for summer 2016.**  
Days that AAPL had a significant relative volume are marked. Those days were suitable for day trading AAPL.

The table below summarizes the three categories of stocks based on float:

Float	Price Range	My Favorite Strategy (Chapter 7)
Low float <i>(less than 10 million)</i>	Under \$10	Only Momentum (Long)
Medium float <i>(10-500 million)</i>	\$10-\$100	All, mostly VWAP and Support or Resistance
Large float <i>(+500 million)</i>	Any (usually +\$20)	All, mostly Moving Average and Reversal

<div> <div>T</div> <div>Gappers Watchlist: 9:00:00 - 9:04:59 8/19/2016</div> <div>— □ &gt;</div> </div>								
Symbol	Price (\$)	Gap (\$)	Gap (%)	Vol Today	Flt (Shr)	Avg True	Avg Vol	Company Name
GEO	21.58	2.07	10.6	398,063	72.5M	1.82	5.24M	GEO GROUP
CXW	19.25	1.68	9.6	436,502	116M	1.77	9.03M	CORRECTIONS CORP
RH	32.85	2.08	6.8	60,714	38.2M	1.38	1.66M	RESTORATION HARDWARE
AMAT	29.05	1.37	4.9	346,655	1.09B	0.40	11.7M	APPLIED MATERIALS
FL	64.61	2.93	4.8	120,569	134M	1.24	2.19M	FOOT LOCKER
DE	80.00	3.06	4.0	353,444	259M	1.00	3.05M	DEERE
TWLO	53.10	-1.30	-2.4	88,975	45.3M	4.16	11.6M	TWILIO INC
EMR	51.89	-2.78	-5.1	118,092	639M	0.88	2.37M	EMERSON ELECTRIC

**Figure 4.2 - My Gappers watchlist on August 19, 2016 at 9 a.m. ET.**

VolumeRadar: 10:55:00 - 10:59:59

x

Symbol	Price (\$)	Chg Close	Vol Today (Shr)	Avg Vol	Pos Rng (%)	Rel Vol	Avg True	Sector
USG	30.54	8.8	3,059,686	918K		10.6	0.56	Manufacturing
RMD	67.89	-1.7	622,086	1.41M		3.23	0.99	Manufacturing
KLAC	68.74	1.8	706,826	1.51M		2.31	1.80	Manufacturing
HLF	62.30	3.0	1,853,963	3.26M		1.86	1.52	Wholesale Trade
HOG	51.83	-1.4	936,729	1.20M		1.34	1.28	Manufacturing
GOLD	98.37	-0.7	172,337	960K		0.56	2.77	Mining, Quarrying, and Oil and Gas Extraction

**Figure 4.3 - My intraday Volume Radar scanner looking for real time Stocks in Play.**

History: Intraday Bull Flag Momentum Scalping Strategy							
Time	Symbol	Price (\$)	Vol Today	Rel Vol	Fit (Shr)	Vol 5 Min	Strategy Name
3:49:26 PM 8/29	NIHD	2.73	1.30M	3.18	92.4M	1,321	Medium-Float Bull Flag Momentum
3:49:01 PM 8/29	LNTH	9.70	1.44M	6.25	11.3M	917.2	Medium-Float Bull Flag Momentum
3:48:53 PM 8/29	LNTH	9.67	1.44M	6.24	11.3M	1,005	Medium-Float Bull Flag Momentum
3:48:18 PM 8/29	NIHD	2.69	1.27M	3.15	92.4M	1,078	Medium-Float Bull Flag Momentum
3:46:51 PM 8/29	NIHD	2.67	1.24M	3.11	92.4M	864.5	Medium-Float Bull Flag Momentum
3:46:32 PM 8/29	LNTH	9.66	1.40M	6.10	11.3M	764.6	Medium-Float Bull Flag Momentum
3:45:54 PM 8/29	CSTM	6.10	2.28M	3.33	70.0M	1,720	Medium-Float Bull Flag Momentum
3:45:27 PM 8/29	LNTH	9.58	1.38M	6.07	11.3M	925.0	Medium-Float Bull Flag Momentum
3:45:02 PM 8/29	SGU	8.90	131,484	3.00	51.7M	8,429	Medium-Float Bull Flag Momentum
3:43:59 PM 8/29	CSTM	6.09	2.25M	3.31	70.0M	1,441	Medium-Float Bull Flag Momentum
3:43:58 PM 8/29	TPIC	20.96	1.16M	4.99	11.2M	2,169	Daily Breakout Bull Flag Momentum
3:43:41 PM 8/29	LNTH	9.56	1.36M	6.02	11.3M	654.7	Medium-Float Bull Flag Momentum

**Figure 4.4 - My intraday real time Bull Flag Momentum scanner.**



History: Bottom Reversal								History: Top Reversal							
Time	Symbol	Price (\$)	Vol Today	Consec Cndis	Rel Vol	Avg True	5 Min RSI (0)	Time	Symbol	Price (\$)	Vol Today	Consec Cndis	Rel Vol	Avg True	5 Min RSI (0)
3:51:29 PM	ZG	34.80	648K	-4	1.12	1.13	23.8	2:36:54 PM	DATA	62.00	6.17M	4	7.76	1.49	53.2
3:49:21 PM	TRI	41.54	733K	-4	1.25	0.48	20.7	2:27:42 PM	SGEN	47.83	535K	4	1.50	1.20	57.1
3:48:13 PM	TRI	41.55	718K	-4	1.23	0.48	21.9	2:27:35 PM	FISV	104.19	711K	4	1.42	1.63	67.9
3:45:45 PM	TRI	41.56	700K	-4	1.22	0.48	22.8	2:27:35 PM	FISV	104.19	711K	4	1.42	1.63	67.9
3:38:37 PM	MCHI	46.86	909K	-4	1.07	0.51	18.1	2:10:03 PM	DD	70.42	2.74M	4	2.23	0.90	73.1
3:37:28 PM	MCHI	46.87	885K	-4	1.05	0.51	18.6	1:46:26 PM	PVH	109.37	829K	5	2.10	2.41	64.6
3:36:12 PM	MCHI	46.89	862K	-4	1.02	0.51	19.9	1:40:54 PM	SHOP	42.20	1.20M	5	1.43	1.72	56.3
3:35:09 PM	MCHI	46.90	844K	-4	1.01	0.51	20.6	1:40:49 PM	MENT	23.68	2.26M	5	6.47	0.47	59.4
2:31:55 PM	SBAC	112.96	618K	-6	1.37	1.79	23.4	1:40:10 PM	PVH	109.36	807K	4	2.09	2.41	65.4
2:26:13 PM	SBAC	112.98	608K	-5	1.37	1.79	24.1	1:35:26 PM	SHOP	42.19	1.19M	4	1.45	1.72	55.7
2:23:22 PM	PGR	32.33	2.00M	-4	1.55	0.39	23.4	1:35:14 PM	MENT	23.67	2.25M	4	6.56	0.47	58.3
2:21:22 PM	PGR	32.34	1.99M	-4	1.56	0.39	24.3	1:32:41 PM	SWFT	19.48	1.32M	5	1.03	0.53	68.4
2:18:40 PM	RMD	67.51	2.48M	-7	5.79	0.89	19.2	1:32:12 PM	DSW	26.01	1.07M	4	1.40	0.67	61.7
2:12:47 PM	RMD	67.54	2.46M	-6	5.91	0.89	18.7	1:31:37 PM	ZAYO	29.37	1.14M	4	1.01	0.40	53.0
1:18:44 PM	AMT	115.03	923K	-5	1.29	1.31	26.1	1:23:30 PM	AME	49.71	852K	4	1.08	0.83	68.0
1:16:34 PM	AMT	115.05	912K	-5	1.29	1.31	26.6	1:20:12 PM	AME	49.70	848K	4	1.08	0.83	66.9
1:15:29 PM	AMT	115.07	910K	-5	1.29	1.31	27.3	1:20:12 PM	AME	49.70	848K	4	1.08	0.83	66.9
1:14:14 PM	AMT	115.08	907K	-4	1.29	1.31	27.4	1:20:12 PM	BA	134.14	1.96M	4	1.20	1.37	55.6

**Figure 4.5 - My intraday real time Reversal scanner.**

The table below summarizes some of the well-known direct-access brokers for day trading. Please note that there are many more firms that are not listed below.

<b>Broker</b>	<b>Trading Platform</b>	<b>PDT Restriction</b>	<b>Based In</b>
<b>Interactive Brokers</b>	TWS or DAS Pro	Yes	USA
<b>SpeedTrader</b>	DAS Pro or Sterling	Yes	USA
<b>CenterPoint Securities</b>	DAS Pro or Sterling	Yes	USA
<b>Lightspeed</b>	Lightspeed Trader	Yes	USA
<b>TD Ameritrade</b>	thinkorswim	Yes	USA
<b>Alliance Trader</b>	DAS Pro	No	Jamaica
<b>CMEG</b>	DAS Pro or Sterling	No	Trinidad and Tobago
<b>SureTrader</b>	DAS Pro	No	Bahamas

UNH 157.38 -- 157.43 UnitedHealth Group Incorporated Comm...						
UNH	160.67 - 156.23	PCL	160.73	N		
Last	157.4145	-3.315 (-2.1%)	Vol	2,424,371		
Lv1	157.38	157.43	VWAP:	157.45	S	
MMID	BID	SIZE	MMID	ASK	SIZE	
NYSE	157.38	2	NYSE	157.43	2	
NASD	157.38	2	ACB	157.45	1	
BATS	157.38	2	ARCA	157.45	1	
NSDQ	157.38	2	BYX	157.46	1	
ACB	157.38	1	NSDQ	157.47	1	
EDGX	157.38	1	NASD	157.47	1	
ARCA	157.38	1	EDGX	157.48	2	
IEX	157.37	1	NSDQ	157.48	0	
NSDQ	157.36	2	ACB	157.49	1	
NSDQ	157.35	1	NSDQ	157.49	0	
ACB	157.35	1	ACB	157.50	1	
ACB	157.34	2	NSDQ	157.51	1	
NSDQ	157.34	1	NSDQ	157.52	2	
ACB	157.33	1	ACB	157.53	1	
NSDQ	157.32	1	BATS	157.53	1	
\Montage\INET\ARCA\						

Figure 5.1 - Example of a Nasdaq Level 2 for UnitedHealth Group (ticker: UNH) in the middle of the trading day. Note that the number of shares (the "SIZE") is in hundreds ( $\times 100$ ).

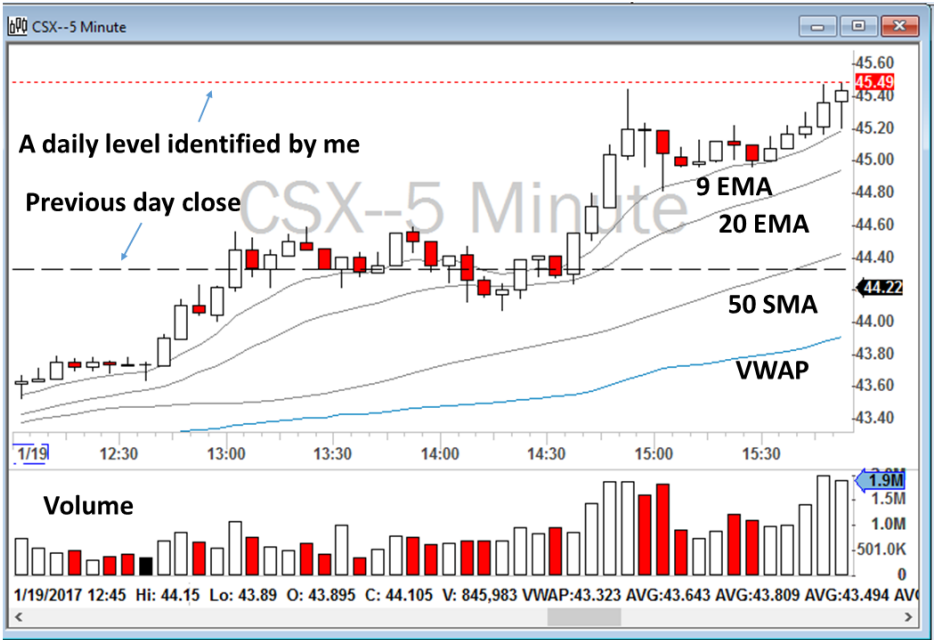


Figure 5.2 - Screenshot of the type of chart I use with my indicators marked on it. Only 200 SMA is not shown because it was moving outside of the zoomed price range.

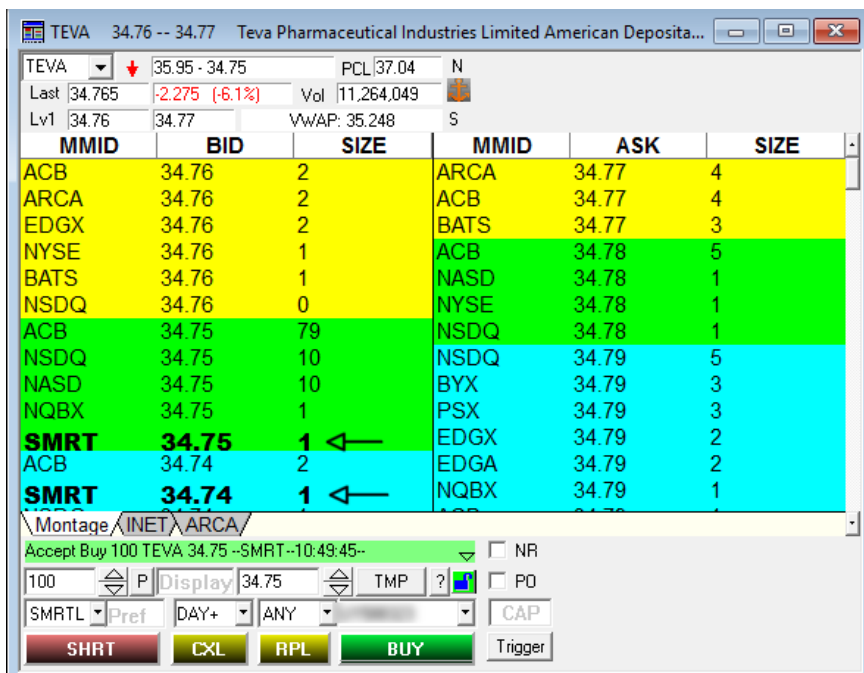


Figure 5.3 - Example of a Nasdaq Level 2 for Teva Pharmaceutical Industries (ticker: TEVA) in the middle of the day. I have two limit orders to buy in total 200 shares on the bid. Note that the number of shares is in hundreds ( $\times 100$ ). SMRT is the default clearing route for my broker, IB.

**Figure 5.4 - A chart showing some of my Hotkeys for my DAS Trader platform. A complete detailed Hotkeys script of my platform can be found on my website at [www.BearBullTraders.com](http://www.BearBullTraders.com).**

<b>Chart View</b>	<b>Hotkey</b>
1 MIN CHART	F1
5 MIN CHART	F2
DAILY CHART	F4
WEEKLY CHART	F5
MONTHLY CHART	F6
<b>Buying Long</b>	
Buy 400 shares at limit Ask+0.05	Alt+1
Buy 200 shares at limit Ask+0.05	Alt+Q
Buy 100 shares at limit Ask+0.05	Alt+A
Sell 1/2 position at limit Bid-0.05	Alt+2
Sell full position at limit Bid-0.05	Alt+3
<b>Selling Short</b>	
Short 400 shares at limit Bid-0.05	Alt+4
Short SSR 400 shares at limit Ask	Alt+5
Short 200 shares at limit Bid-0.05	Alt+R
Short SSR 200 shares at limit Ask	Alt+T

Short 100 shares at limit Bid-0.05	Alt+F
Short SSR 100 shares at limit Ask	Alt+G
Buy to cover 1/2 position at limit Ask+0.05	Alt+6
Buy to cover full position at limit Ask+0.05	Alt+7

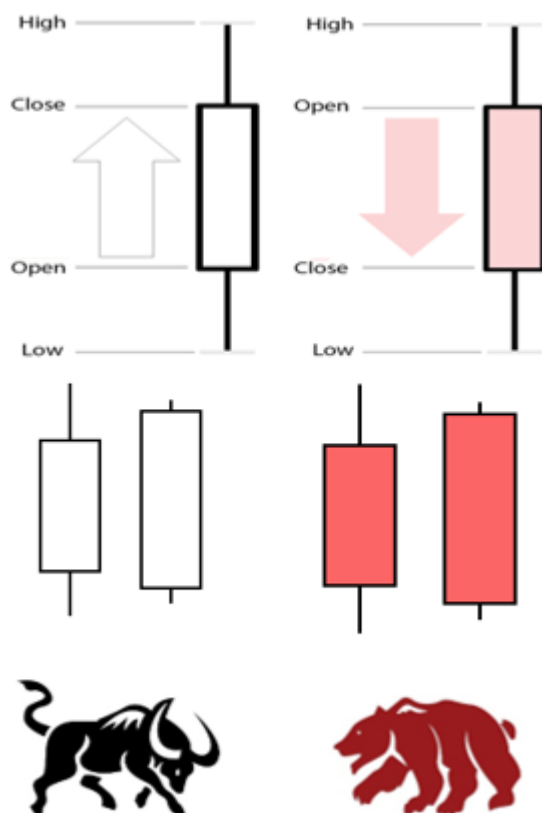


Figure 6.1 - Candlestick examples.



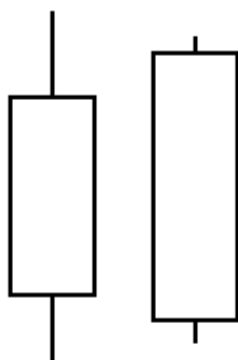
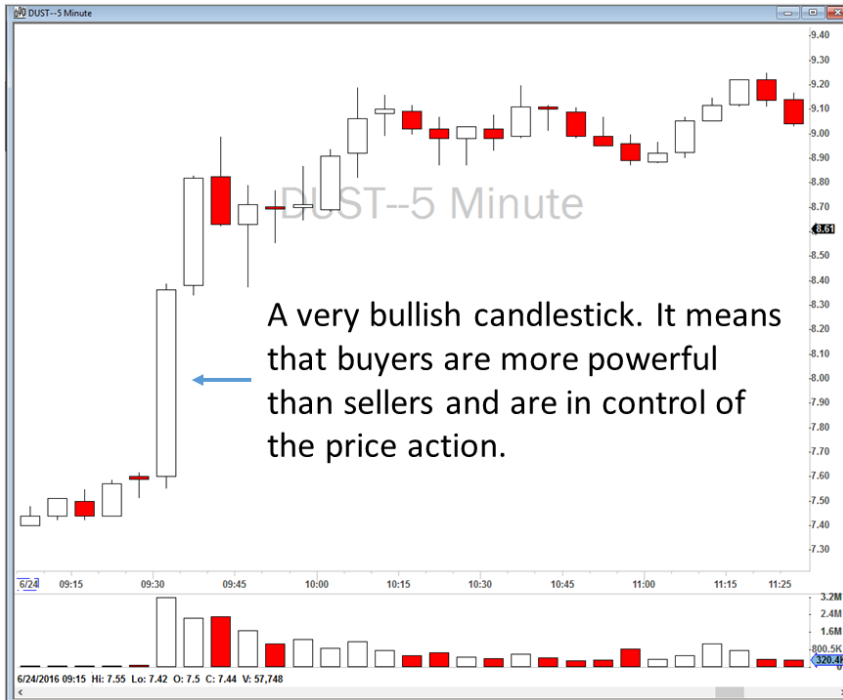


Figure 6.2 - Bullish candles.



**Figure 6.3 - A series of bullish candles shows that bulls (buyers) are in control of the price.**

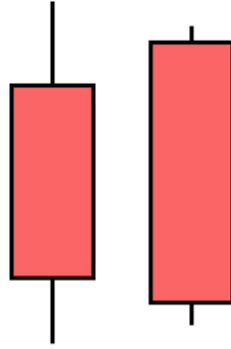
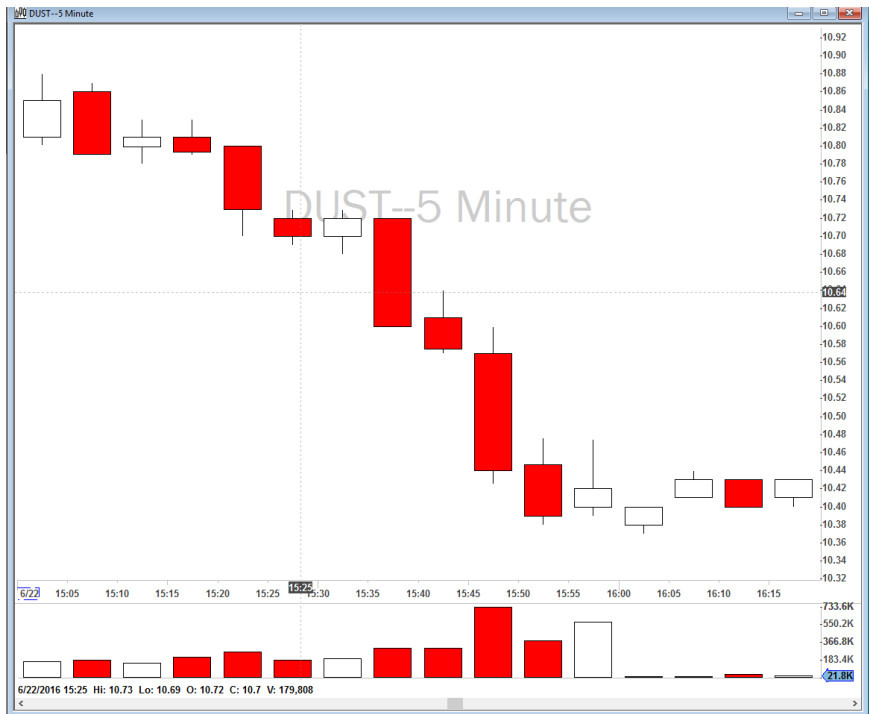
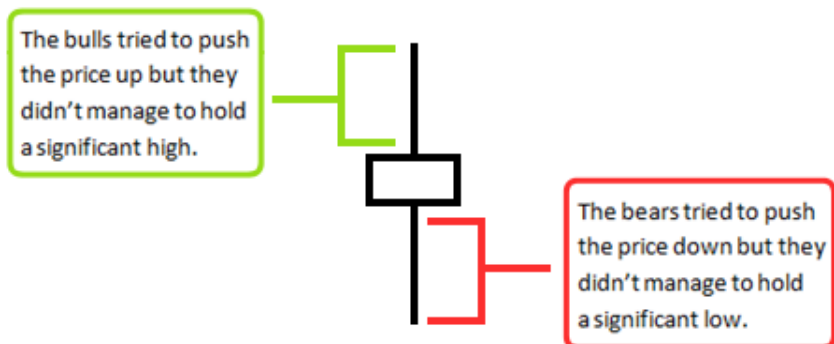


Figure 6.4 - Bearish candles.



**Figure 6.5 - A series of bearish candles shows that bears (sellers) are in control of the price.**



**Figure 6.6 - Buying and selling pressure definition on spinning top candlestick.**

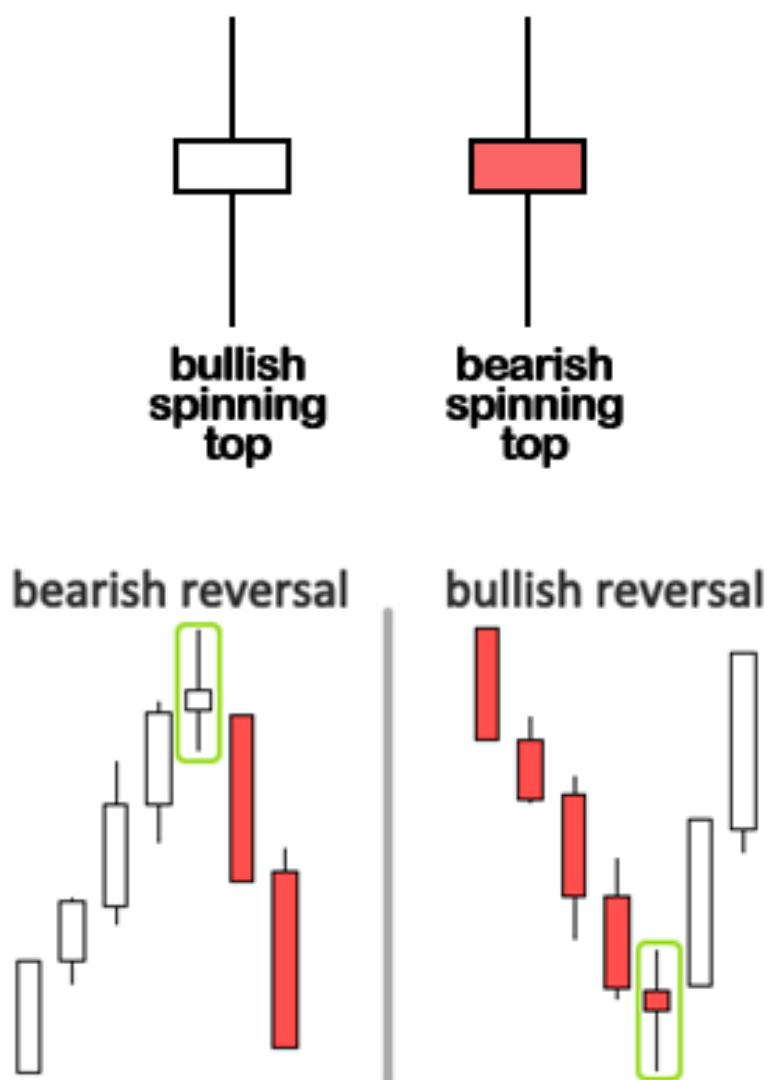


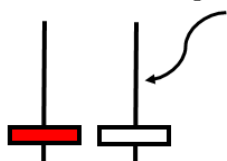
Figure 6.7 - Formation of spinning top candlesticks for reversal trends.



**Doji**

*indecision*

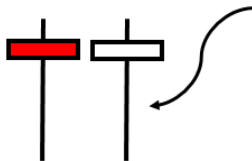
Buyers tried to push the price up,  
but did not manage to hold it



**Shooting Star Doji**

*Indecision, sellers may take control*

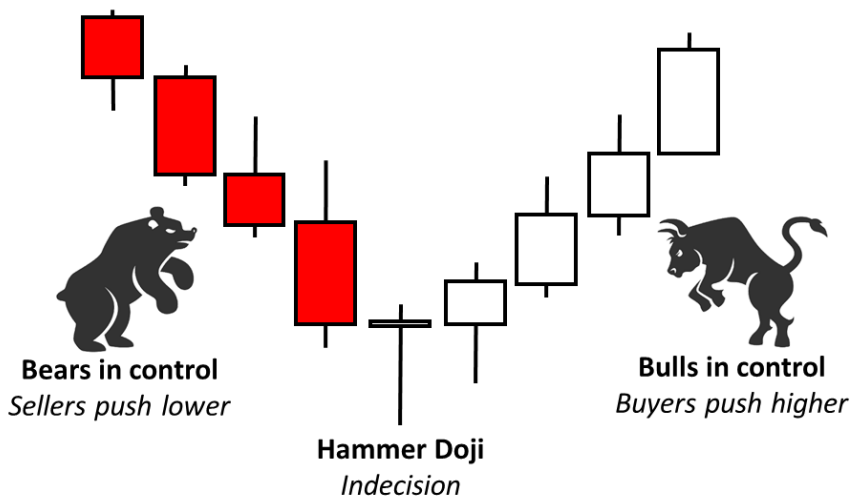
Sellers tried to push the price down,  
but did not manage to hold it



**Hammer Doji**

*Indecision, buyers may take control*

**Figure 6.8 - Examples of Doji candlesticks.**



**Figure 6.9 - Bottom Reversal Strategy with an indecision hammer candlestick formed as a sign of entry.**



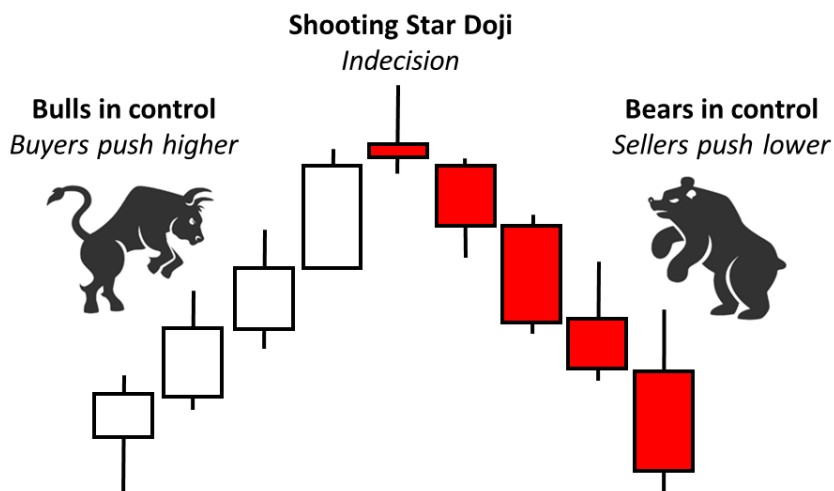


Figure 6.10 - Top Reversal Strategy with an indecision shooting star candlestick formed as a sign of entry.

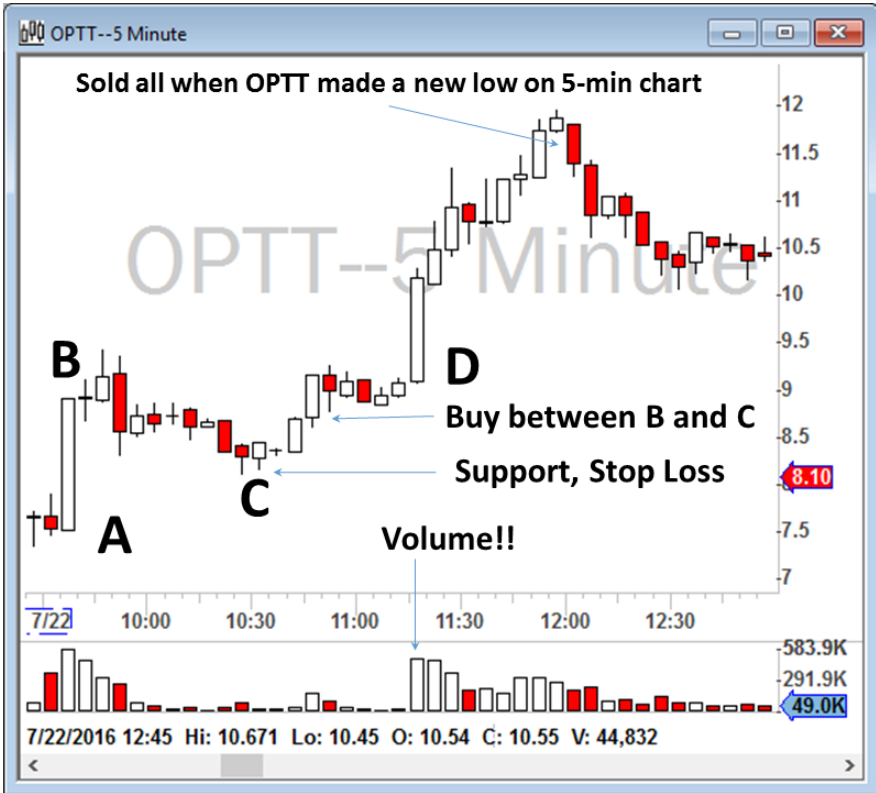
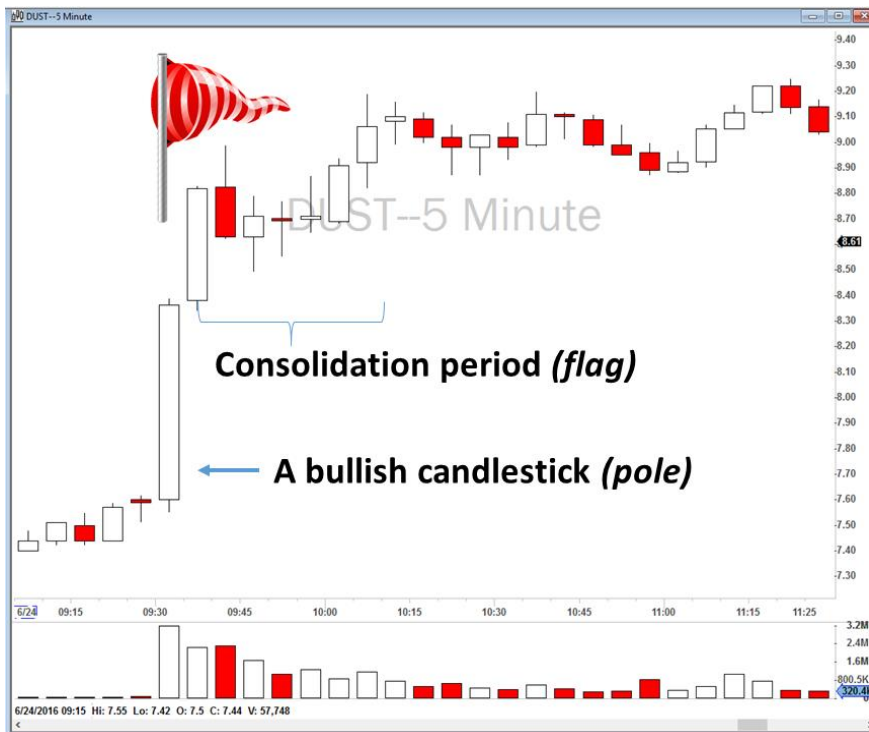


Figure 7.1 - Example of an ABCD Pattern.



Figure 7.2 - Example of ABCD Pattern and abcd pattern.



**Figure 7.3 - Example of Bull Flag formation with one consolidation period.**



Figure 7.4 - Example of Bull Flag formation with two consolidation periods on RIGL.

History: Intraday Bull Flag Momentum Scalping Strategy							
Time	Symbol	Price (\$)	Vol Today	Rel Vol	Fit (Shr)	Vol 5 Min	Strategy Name
12:45:00 PM	CELP	8.68	53,491	2.70	4.26M	4,059	Strong Low-Float Bull Flag Momentum
12:38:51 PM	RESN	5.66	88,841	3.78	5.63M	2,168	Strong Low-Float Bull Flag Momentum
12:36:15 PM	RIGL	3.94	42.49M	120.83	89.1M	4,111	Medium-Float Bull Flag Momentum
12:34:59 PM	ITEK	7.16	659,979	7.18	13.2M	19.3K	Medium-Float Bull Flag Momentum
12:31:52 PM	RIGL	3.91	41.87M	120.97	89.1M	3,994	Medium-Float Bull Flag Momentum
12:29:30 PM	KPTI	9.42	1.47M	22.72	3.93M	1,450	Low-Float Bull Flag Momentum
12:29:30 PM	KPTI	9.39	1.47M	22.72	3.93M	1,445	Low-Float Bull Flag Momentum
12:12:37 PM	AMID	12.08	2.62M	28.09	20.7M	55.5K	+\$10 Strong Bull Flag Momentum
11:57:44 AM	LNTH	9.96	604,695	4.84	11.3M	543.7	Medium-Float Bull Flag Momentum
11:56:42 AM	LNTH	9.95	599,426	4.83	11.3M	569.0	Medium-Float Bull Flag Momentum
11:51:04 AM	BIOL	1.81	224,633	6.43	32.4M	2,353	Medium-Float Bull Flag Momentum

**Figure 7.5 - Example of my intraday Bull Flag Strategy scanner.**

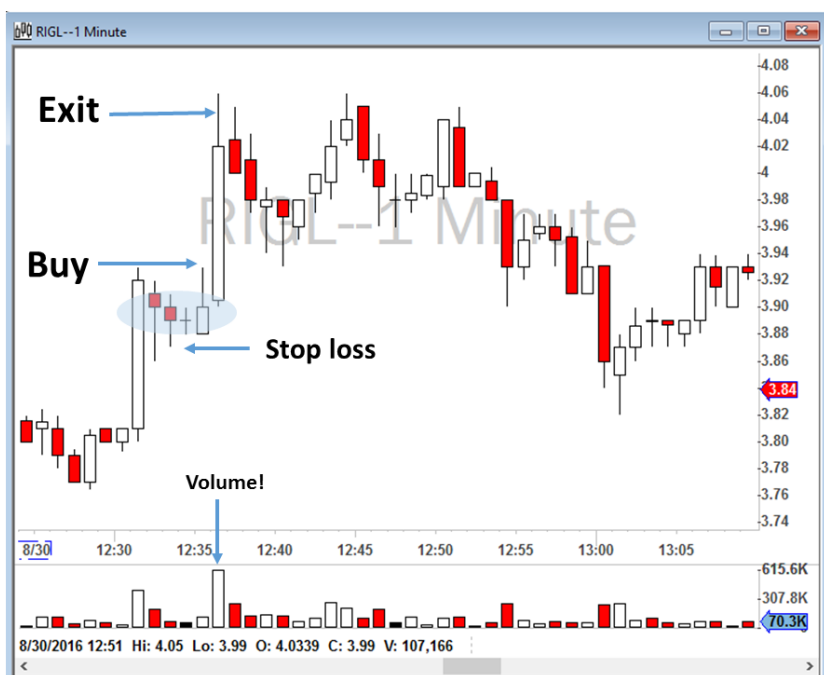


Figure 7.6 - Entry, stop and exit of a Bull Flag Strategy on RIGL.

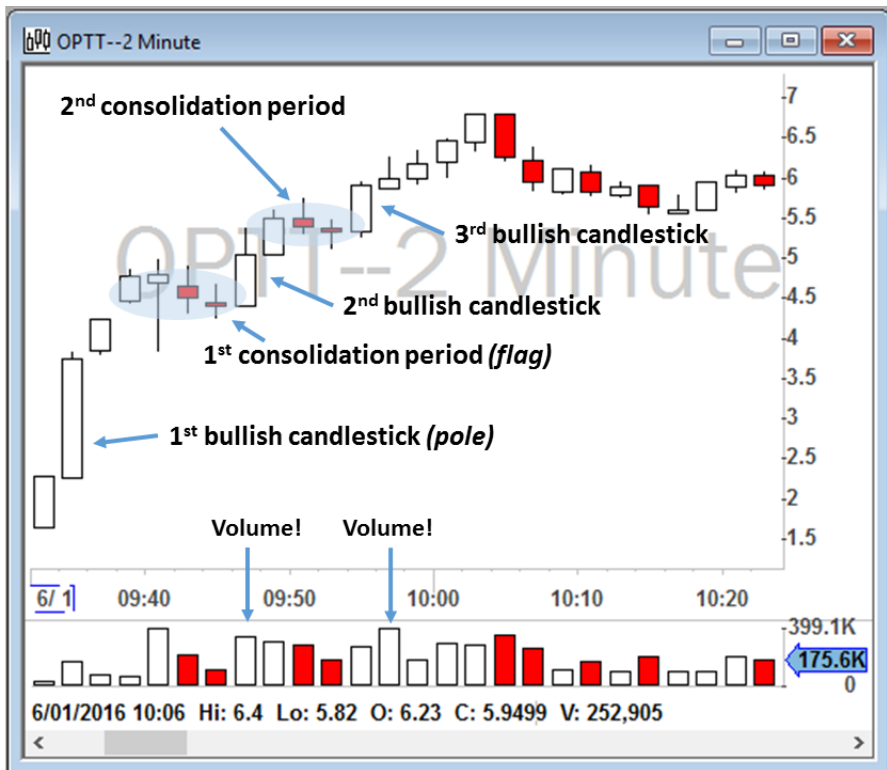
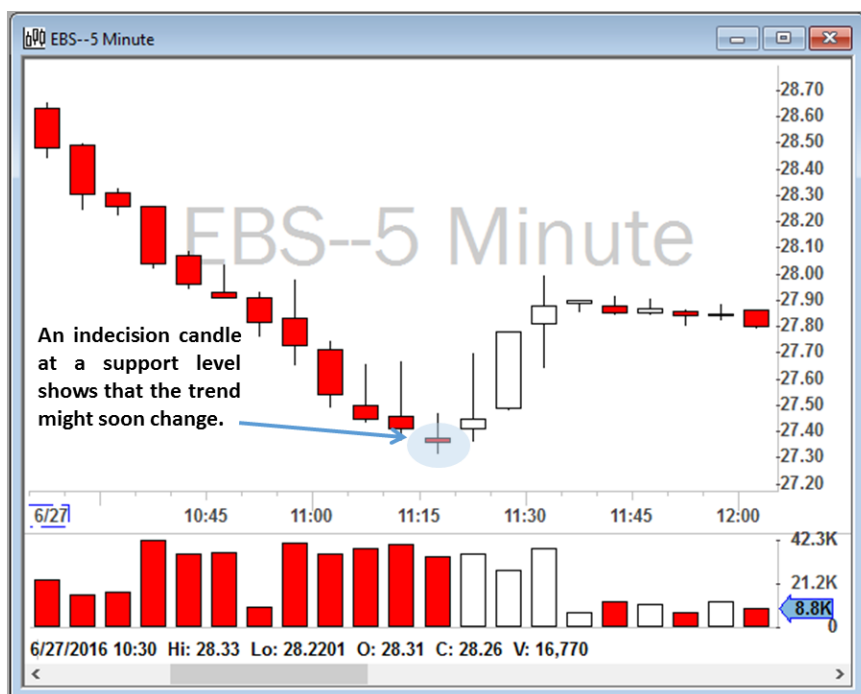
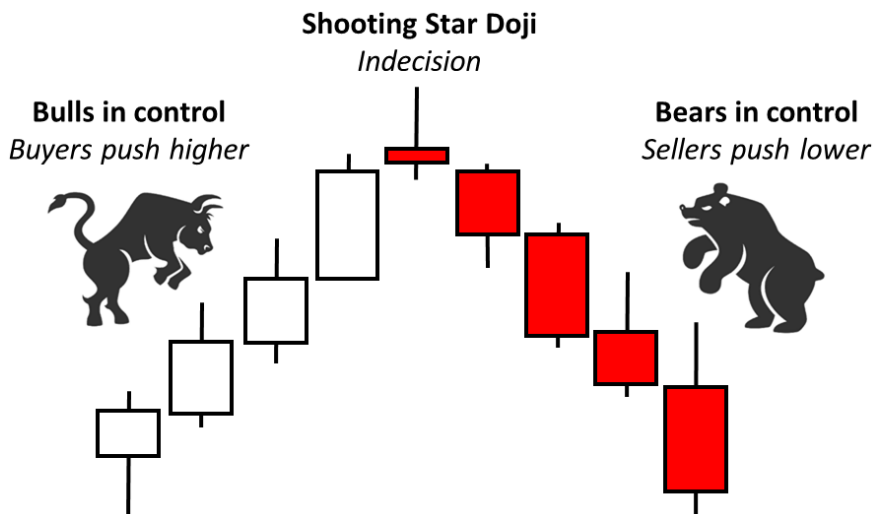


Figure 7.7 - Screenshot showing three consolidation periods in OPTT. Note the volume increases after each consolidation period.

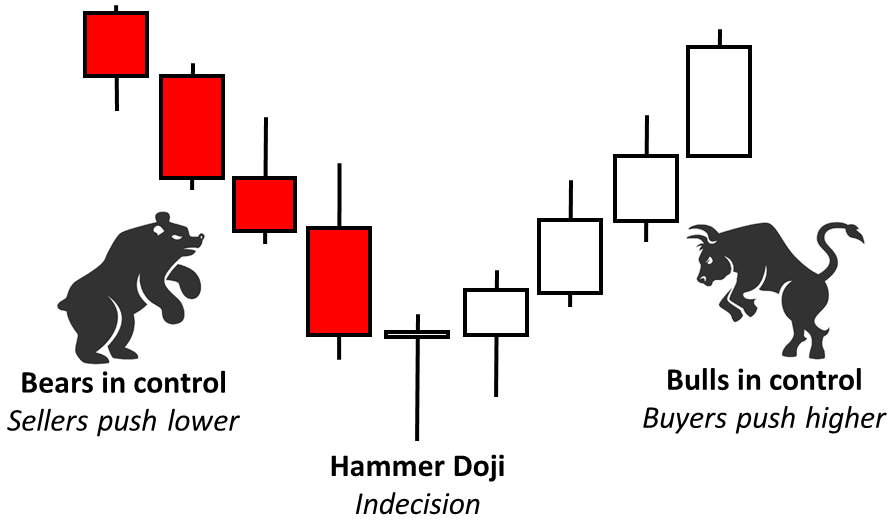




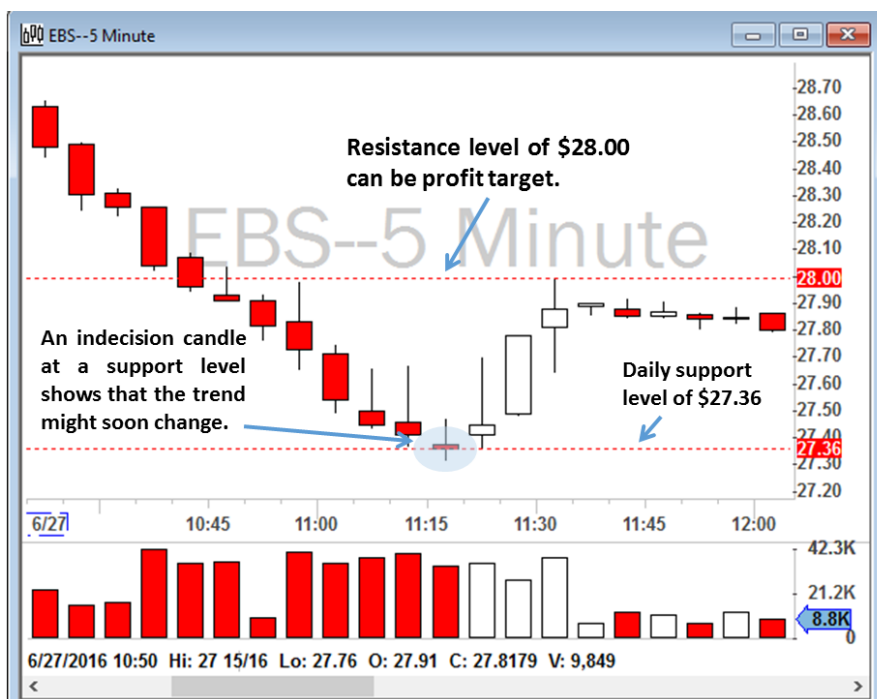
**Figure 7.8 - Example of a Reversal Strategy on EBS.**



**Figure 7.9 - Top Reversal Strategy with an indecision shooting star candlestick formed as a sign of entry.**



**Figure 7.10 - Bottom Reversal Strategy with an indecision hammer candlestick formed as a sign of entry.**



**Figure 7.11 - Example of a Bottom Reversal Strategy on EBS.**



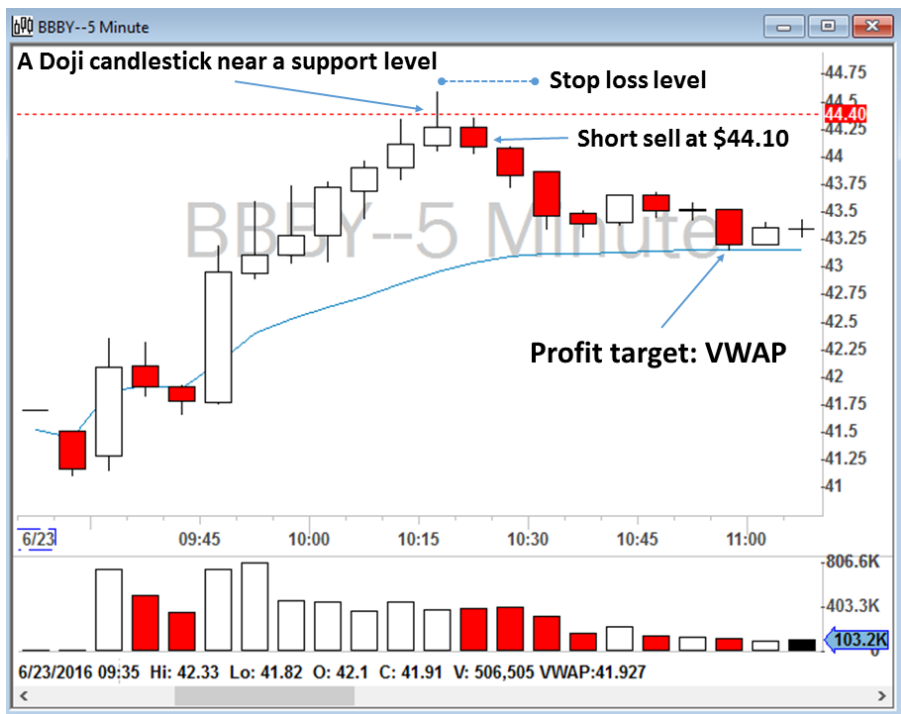
**Figure 7.12 - Example of a Bottom Reversal Strategy on ALR.**

History: Bottom Reversal (m... <span>—</span> <span>□</span> <span>×</span>							
Symbol	Time	Consec Cndls	Price (\$)	Ft (Shr)	Avg True	Vol 10 Min	Rel Vol
GWRE	10:57	-6	57.49	72.45M	1.50	48.7	2.35
PHG	10:57	-8	23.04	912.49M	0.66	163.9	3.18
BXP	10:57	-10	125.53	152.55M	1.91	82.6	1.68
ALR	10:57	-7	40.70	82.21M	0.77	142.9	1.21
BOFI	10:57	-7	15.51	57.57M	0.65	105.6	1.63
IMAX	10:57	-6	27.62	58.75M	0.90	77.6	1.02
DIS	10:57	-6	94.19	1.49B	1.41	141.8	1.45
COP	10:57	-10	41.29	1.24B	1.47	84.4	1.65
YELP	10:57	-9	26.57	54.92M	1.09	138.0	1.61
P	10:57	-4	11.25	188.46M	0.48	245.0	1.23
UHS	10:57	-11	129.57	87.99M	2.75	99.0	1.29
AYI	10:57	-8	234.47	43.02M	5.03	172.2	1.73
RNG	10:57	-6	19.04	56.45M	0.60	60.7	1.98
YNDX	10:57	-10	19.78	264.00M	0.81	496.1	2.02
CAB	10:57	-6	46.42	45.13M	0.99	112.5	1.46
ETN	10:57	-8	54.36	456.47M	1.33	485.9	5.74
FSIC	10:57	-5	8.55		0.17	89.7	0.83
EZPW	10:56	-5	6.77	45.20M	0.34	106.3	1.50
ZOES	10:56	-6	34.60	17.22M	1.18	733.1	2.85
DDX	10:56	-6	22.45	228.88M	0.91	73.0	0.83

Figure 7.13 - Example of my Trade Ideas real time Bottom Reversal scanner showing ALR with seven consecutive downward candlesticks.

History: V5 Top Reversal								
Symbol	Time	Consec Cndis	Price (\$)	Flt (Shr)	Avg True	Vol 15	Vol Today	Rel Vol
KEX	10:18	4	68.52	52.5M	1.66	94.1	58,955	1.11
KEX	10:18	4	68.51	52.5M	1.66	93.6	58,855	1.11
BBBY	10:18	6	44.60	149M	1.18	1.1K	5.28M	21.60
BBBY	10:18	6	44.58	149M	1.18	1.1K	5.28M	21.59
BBBY	10:18	6	44.57	149M	1.18	1.1K	5.28M	21.59
BBBY	10:18	6	44.56	149M	1.18	1.1K	5.28M	21.59
BBBY	10:18	6	44.55	149M	1.18	1.1K	5.27M	21.59
BBBY	10:18	6	44.55	149M	1.18	1.1K	5.27M	21.59
BBBY	10:18	6	44.53	149M	1.18	1.1K	5.27M	21.58
BBBY	10:18	6	44.51	149M	1.18	1.1K	5.27M	21.58
BBBY	10:18	6	44.50	149M	1.18	1.1K	5.27M	21.57
BBBY	10:18	6	44.49	149M	1.18	1.1K	5.27M	21.57
THC	10:17	5	29.04	79.8M	0.95	139	174K	1.37
KSS	10:17	4	37.77	182M	1.09	70.6	330K	0.45
INCY	10:17	5	80.22	174M	3.03	108	188K	1.29
INCY	10:17	5	80.22	174M	3.03	108	188K	1.29
KSS	10:17	4	37.75	182M	1.09	69.8	329K	0.45
SSYS	10:17	4	22.85	51.2M	1.01	172	158K	0.87
THC	10:17	5	29.03	79.8M	0.95	138	174K	1.38
THC	10:17	5	29.03	79.8M	0.95	138	174K	1.38
SSYS	10:17	4	22.84	51.2M	1.01	171	158K	0.87
BBBY	10:17	6	44.48	149M	1.18	1.1K	5.23M	21.67
KSS	10:17	4	37.74	182M	1.09	68.1	327K	0.44
KSS	10:17	4	37.72	182M	1.09	67.7	327K	0.44
BBBY	10:17	6	44.47	149M	1.18	1.1K	5.22M	21.66

Figure 7.14 - Example of my real time Top Reversal scanner alerting me to BBBY.



**Figure 7.15 - Example of a Top Reversal Strategy on BBY.**



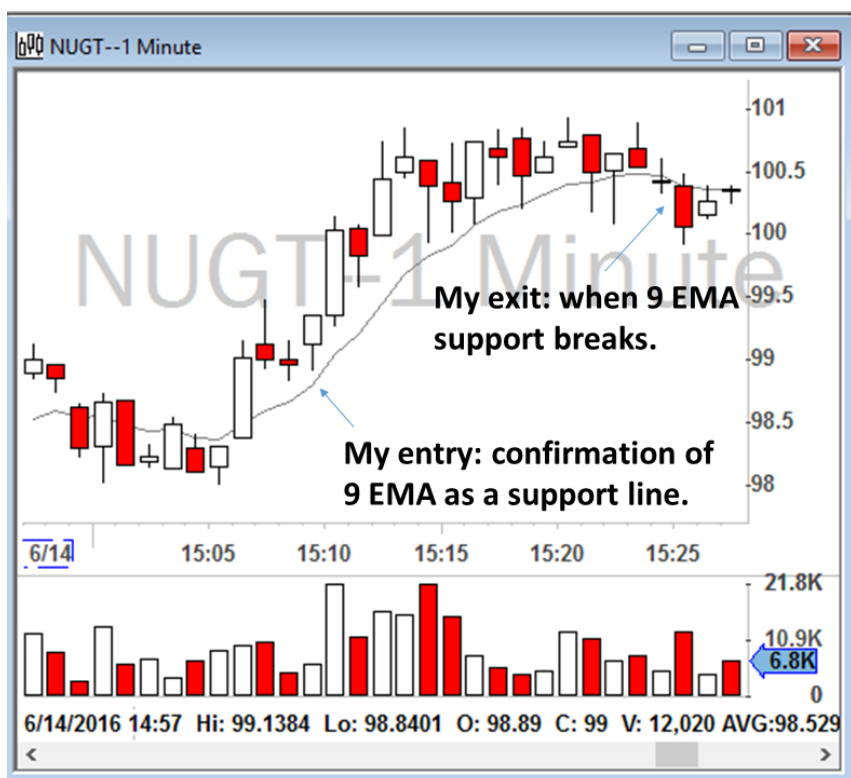


Figure 7.16 - Example of a long Moving Average Trend Strategy on NUGT on a 1-minute chart.

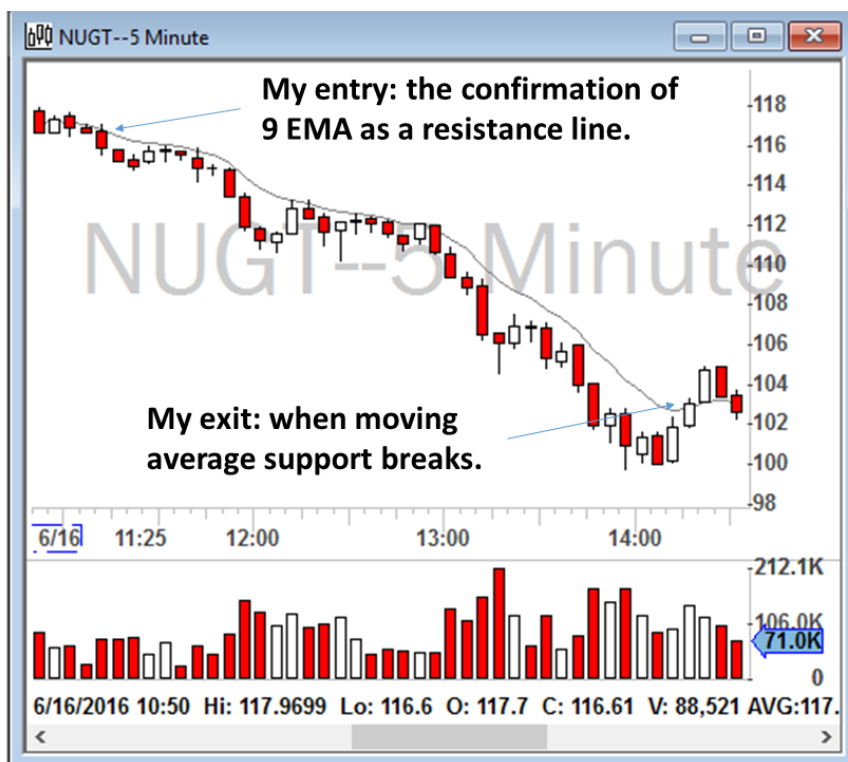


Figure 7.17 - Example of a short Moving Average Trend Strategy on NUGT on a 5-minute chart.

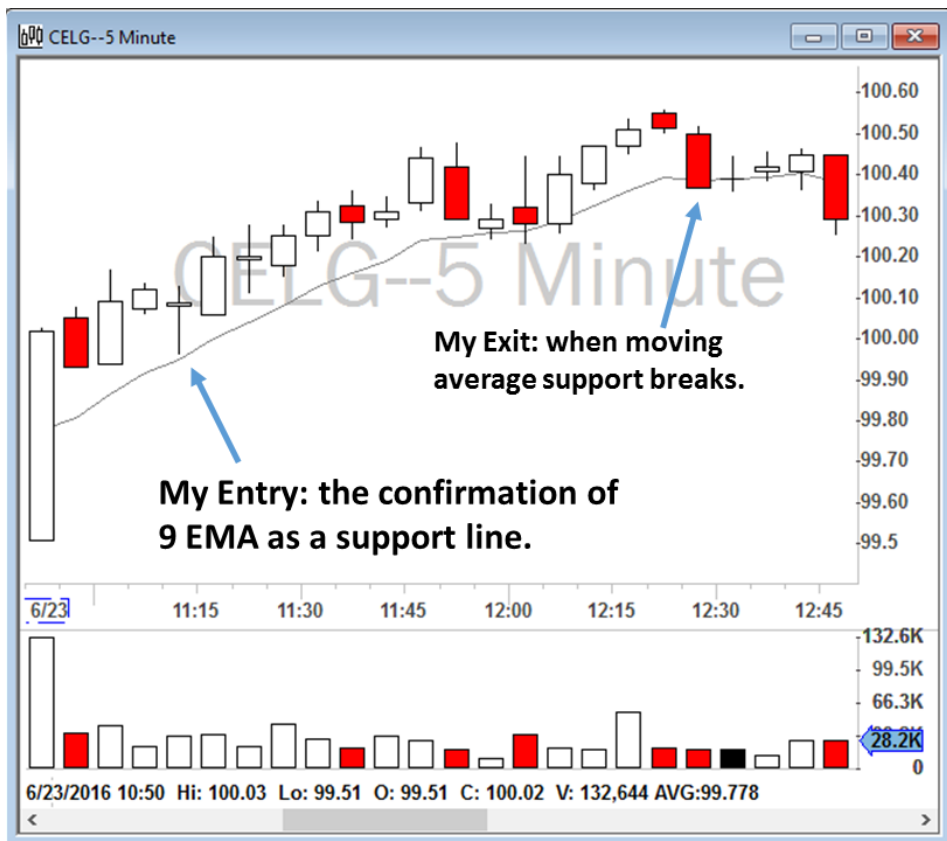


Figure 7.18 - Example of a Moving Average Trend Strategy on CELG.

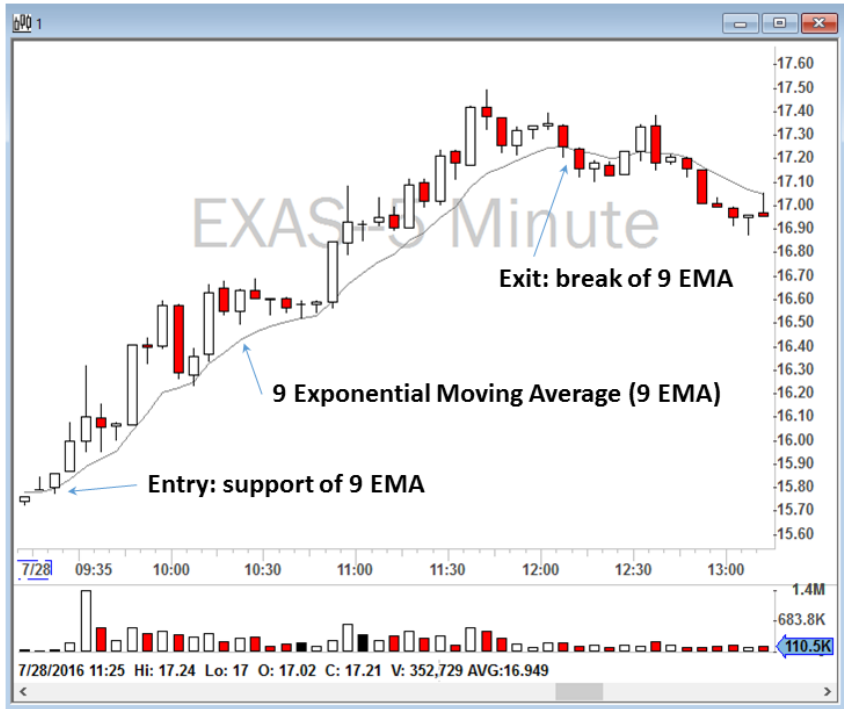


Figure 7.19 - Example of a Moving Average Trend Strategy on EXAS.

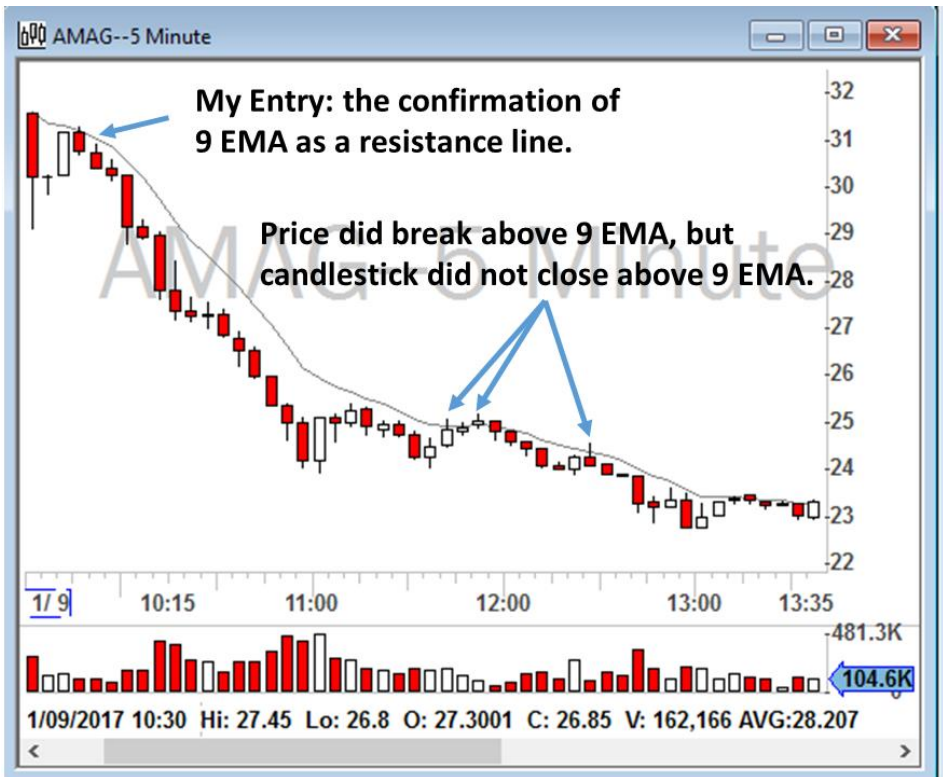
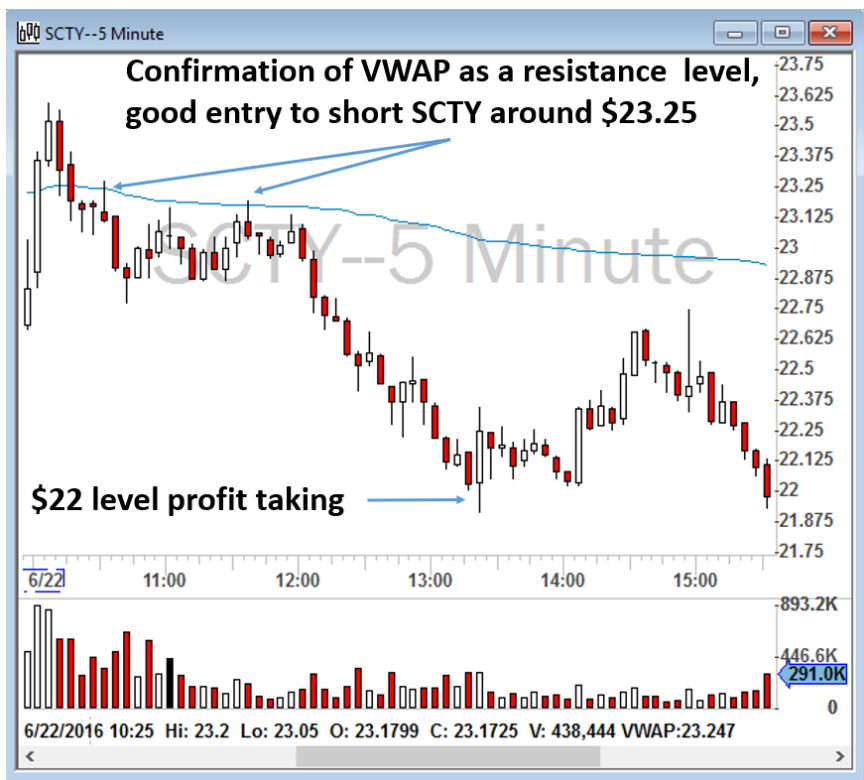


Figure 7.20 - Example of a Moving Average Trend Strategy on AMAG.



Figure 7.21 - Example of a long VWAP Strategy on SCTY.



**Figure 7.22 - Example of a short VWAP Strategy on SCTY.**





**Figure 7.23 - Example of a Support or Resistance Strategy on SCTY daily chart.**

Trade-Ideas Pro

File New Tools Windows Help Account

17ms

T Up Gappers: 9:20:00 - 9:24:59 6/21/2016

Symbol	Price (\$)	Gap (\$)	Gap (%)	Vol Today (Shr)	Flt (Shr)	Avg True	Company
UAL	45.00	1.60	3.7	63,191	336M	1.53	UNITED CONTINE
LEN	48.30	1.64	3.5	59,372	189M	0.94	LENNAR
TM	107.60	1.80	1.7	51,698	1.36B	1.62	TOYOTA MOTOR
BUD	128.53	2.08	1.6	99,945	784M	2.52	ANHEUSER-BUSC
BTI	124.60	1.39	1.1	120,962	894M	2.24	BRITISH AMERICA
KMX	49.05	-1.58	-3.1	265,779	193M	1.53	CARMAX
CSAL	26.85	-1.31	-4.7	1,984,509	136M	0.64	COMMUNICATIO LEASING
WERN	22.12	-2.56	-10.4	315,191	44.6M	0.70	WERNER ENTERI

Figure 7.24 - My Gappers watchlist on June 21, 2016 at 9:20 a.m. showing KMX may be a Stock in Play for that day.

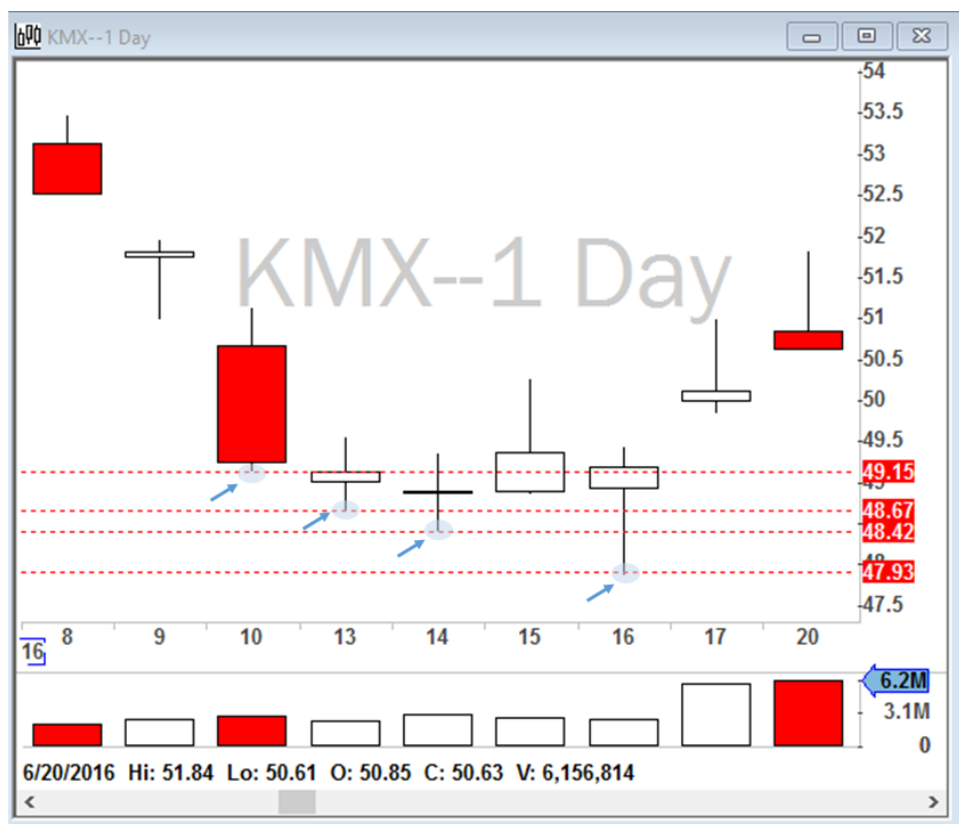
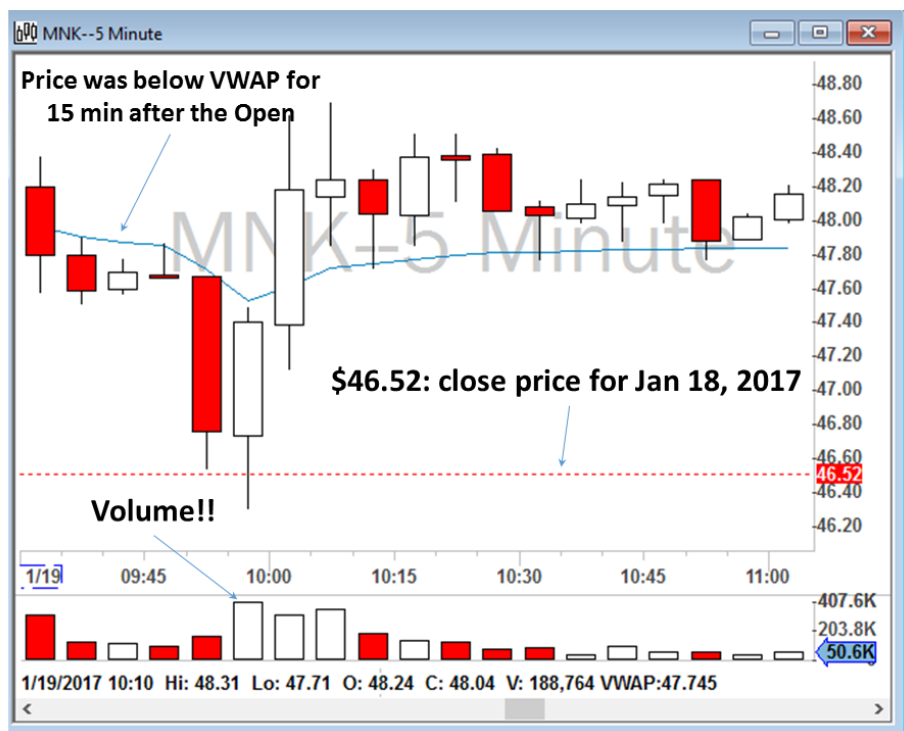


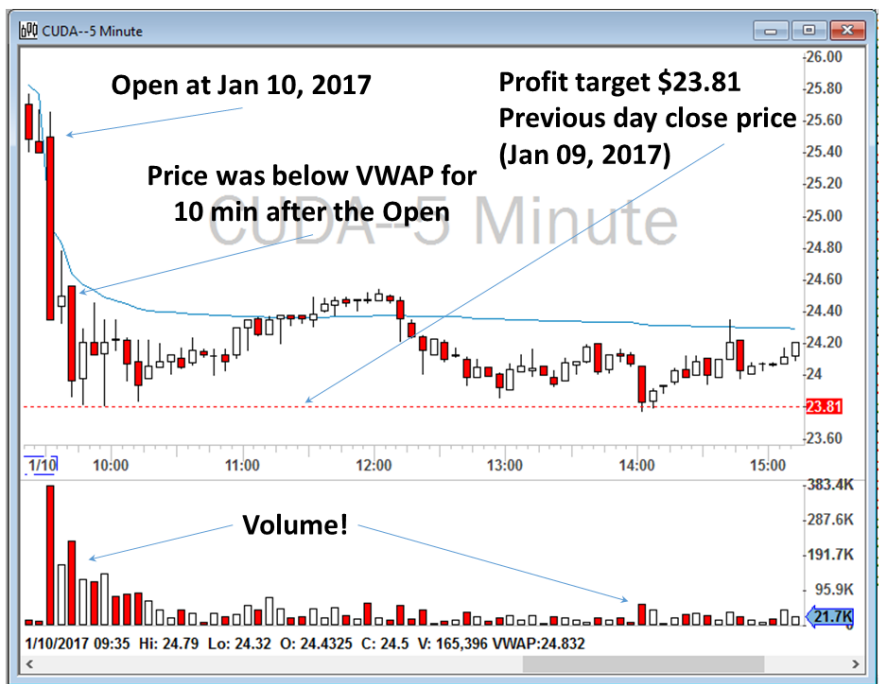
Figure 7.25 - KMX support or resistance lines on a daily chart up to June 20, 2016.



Figure 7.26 - Example of a Support or Resistance Strategy on KMX on a 5-minute chart with my trades for that day marked.



**Figure 7.27 - Example of a short sell Red-to-Green Strategy on MNK.**



**Figure 7.28 - Example of a short Red-to-Green Strategy on CUDA.**

T Pre-Market Movers up or down \$1: 9:00:00 - 9:04:59 3/09/2017								
Symbol	\$	T	C \$	C %	Float	f, r, i	S Float	Sector
ELF	30.30	186,010	5.00	19.8	3,556,310	0.90	7.49	Retail Trade
HZN	14.00	59,961	-3.02	-17.7	18.08M	0.58	6.54	Manufacturing
TLRD	16.70	437,617	-6.67	-28.5	48.34M	0.91	26.12	Retail Trade

Figure 7.29 - My Gappers watchlist on March 9, 2017 at 9 a.m. showing ELF may be a Stock in Play for that day.

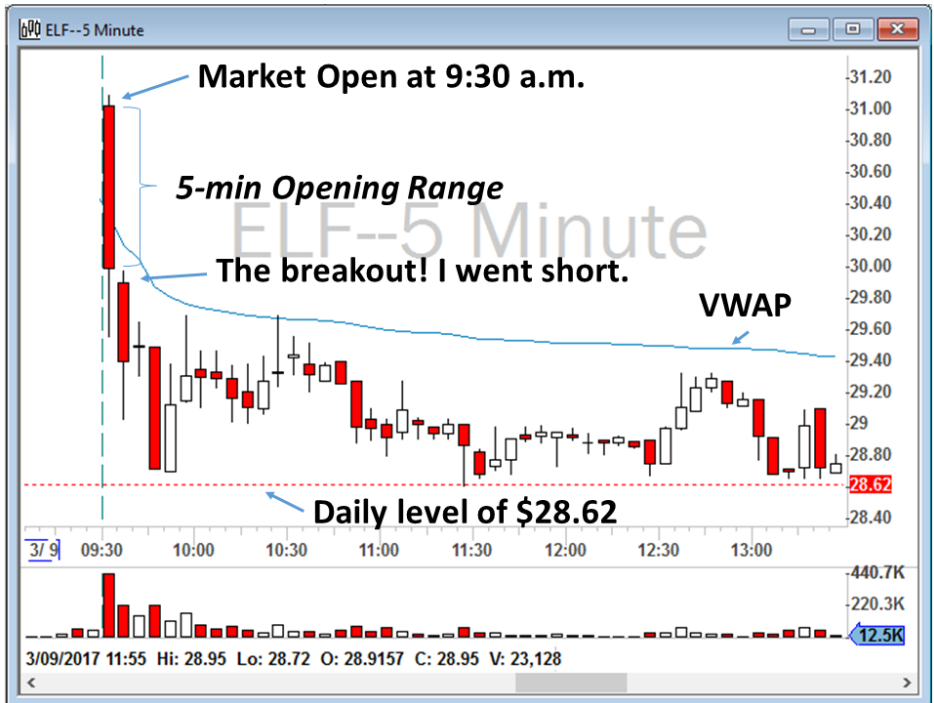


Figure 7.30 - Example of the ORB Strategy on ELF 5-minute chart.



T Pre-Market Movers up or down \$1: 9:00:00 - 9:04:59 2/15/2017									
Symbol	\$	T	C \$	C %	Float	f, r, i	S Float	Sector	
SODA	50.70	107,445	3.35	7.1	20.93M	1.04	5.78	Manufacturing	
PG	89.44	449,389	1.58	1.8	2.56B	0.79	1.37	Manufacturing	
AIG	63.10	552,600	-3.79	-5.7	1.03B	0.81	1.45	Finance and Insurance	
FOSL	18.71	702,161	-4.16	-18.2	33.89M	1.11	35.88	Wholesale Trade	

**Figure 7.31 - My Gappers watchlist on February 15, 2017 at 9 a.m. showing PG may be a Stock in Play for that day.**

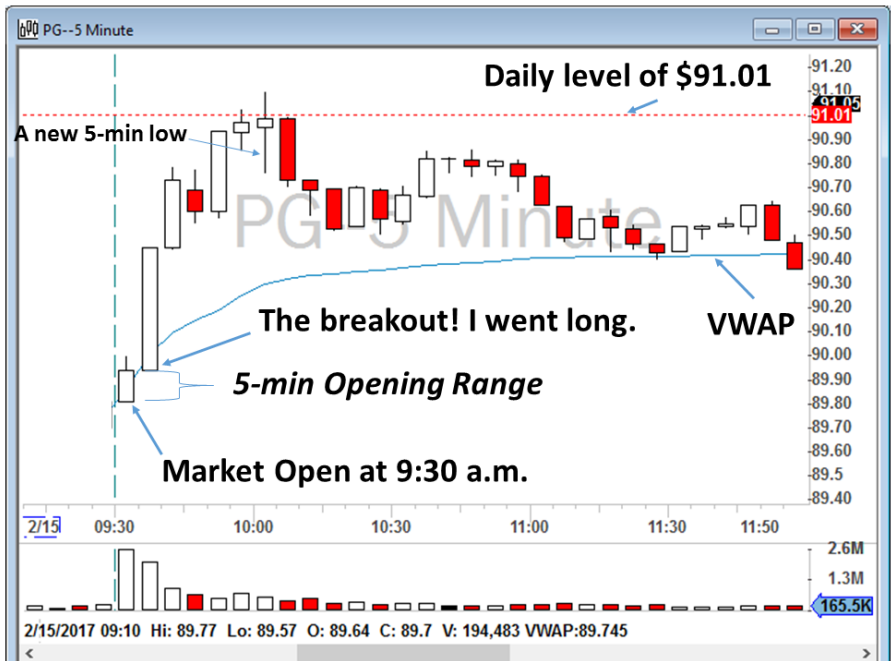

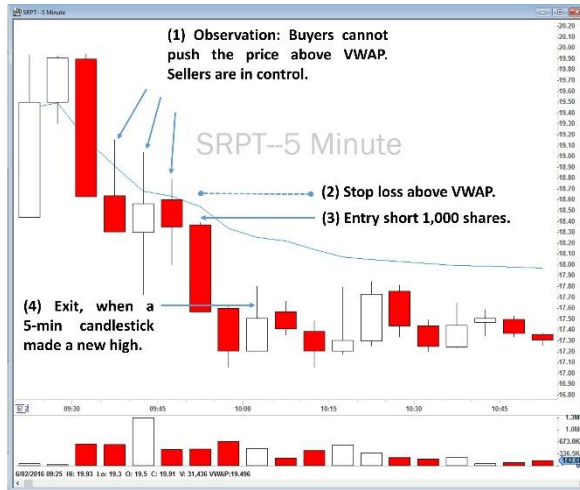


Figure 7.32 - Example of the ORB Strategy on PG daily chart.

T Up Gappers: 9:15:00 - 9:19:59 6/02/2016										
Symbol	Price (\$)	Gap (\$)	Gap (%)	Vol Today	Flt (Shr)	Avg True	Avg Vol	Company Name		
SRPT	18.30	-3.11	-14.5	77,117	36.0M	1.86	9.48M	SAREPTA THERAPEUTICS		
CXRX	32.58	1.53	4.9	60,106	39.2M	2.25	609K	CONCORDIA HEALTH CARE		
BOX	11.75	-1.06	-8.3	135,063	42.4M	0.33	1.15M	BOX INC		
QLIK	30.25	1.28	4.4	1.22M	86.6M	1.06	2.17M	QLIK TECHNOLOGIES		
CIEN	19.56	1.80	10.1	536,084	134M	0.46	2.73M	CIENA CORP		
ORCL	39.03	-1.23	-3.1	97,831	3.03B	0.53	9.12M	ORACLE CORP		

**Figure 8.1 - My watchlist at 6:15 a.m. (9:15 a.m. New York time) - SRPT is on my watchlist.**



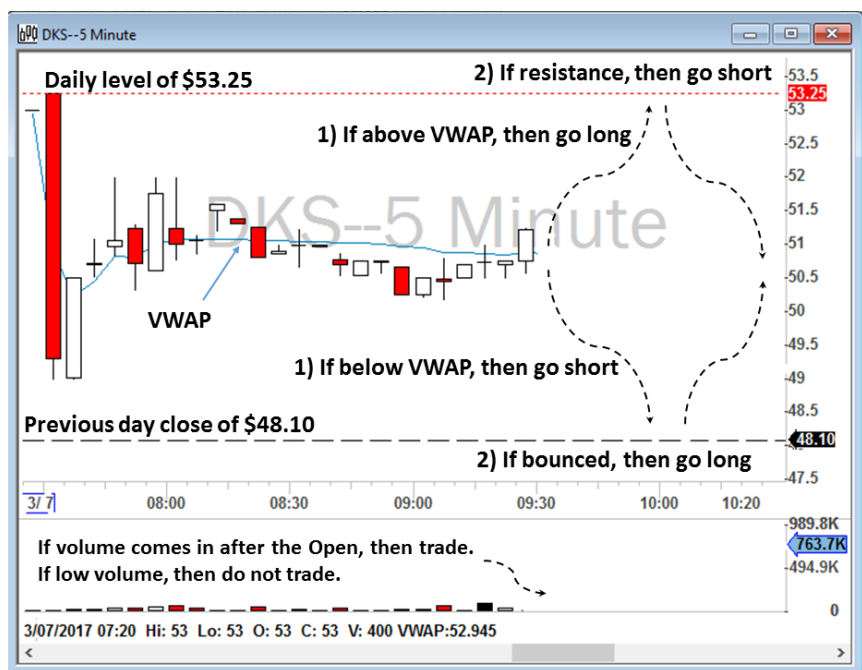
**Figure 8.2 - 5-minute chart on June 2, 2016.  
Market opened at 9:30 a.m. New York time.**



Figure 8.3 - My profit on June 2, 2016 (only 12 minutes into my trading day).

T Pre-Market Movers up or down \$1: 9:00:00 - 9:04:59 3/07/2017								
Symbol	\$	T	C \$	C %	Float	I, I, I	\$Float	Sector
MOMO	28.96	1,208,247	2.35	8.8	113.45M	1.07		Management of Companies and Enterprises
DISH	64.25	386,878	3.02	4.9	201.27M	1.08	7.80	Information
FRC	95.65	102,409	-1.31	-1.4	153.09M	1.44		Finance and Insurance
DKS	50.45	455,668	-2.16	-4.1	87.89M	1.63	7.73	Retail Trade
SNAP	22.53	1,625,320	-1.24	-5.2	775.61M	4.72		Information

Figure 9.1 - My watchlist at 6 a.m. (9 a.m. New York time) on March 7, 2017 - DKS is on my watchlist.

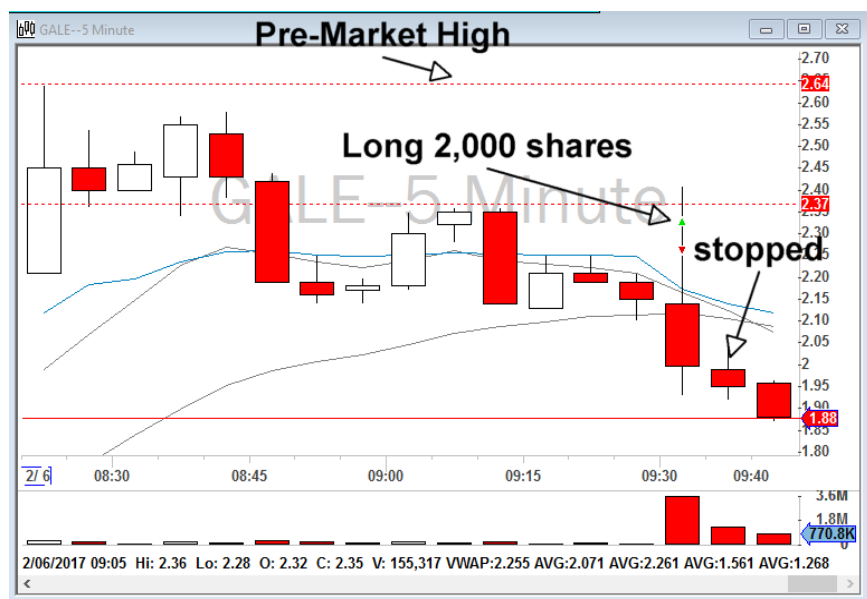


**Figure 9.2 - Pre-market 5-minute chart of DKS on March 7, 2017 with my if-then statements noted. Market will open at 9:30 a.m. New York time.**



Figure 9.3 - 5-minute chart of DKS on March 7, 2017 and my profit for that day (I also traded MEET, MOMO and MYL but they are not shown here and are not relevant to this example).

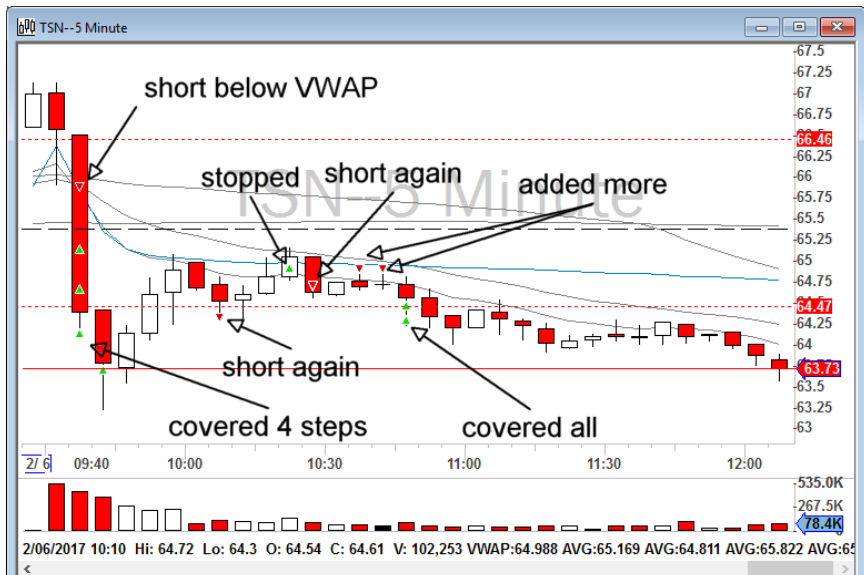




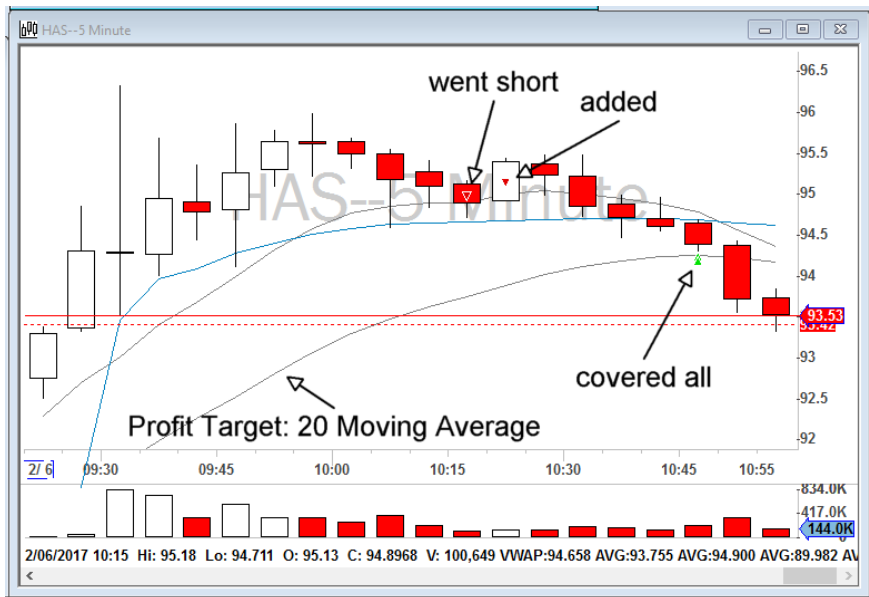
**Figure 9.4 - 5-minute chart of GALE on February 6, 2017.**



Figure 9.5 - 1-minute chart of GALE on February 6, 2017.



**Figure 9.6 - 5-minute chart of TSN on February 6, 2017. I made three trades on it.**



**Figure 9.7 - 5-minute chart of HAS on February 6, 2017.**



**Figure 9.8 - 5-minute chart of COG on February 6, 2017.**